

Bovine IL-13 ELISA Kit ab272466

リコンビナント SimpleStep ELISA

画像数 4

製品の概要

製品名	Bovine IL-13 ELISA Kit				
検出方法	Colorimetric				
再現性	Intra-Assay (同時再現性)				
	サンプル	N	平均値	SD	CV%
	Serum	8			4.1%
	Inter-Assay (日差再現性)				
	サンプル	N	平均値	SD	CV%
	Serum	3			1.8%
サンプルの種類	Serum, Cell culture media, Hep Plasma				
アッセイタイプ	Sandwich (quantitative)				
検出感度	3.4 pg/ml				
検出範囲	15.6 pg/ml - 1000 pg/ml				
添加回収試験	特定サンプルでの回収試験				
	サンプルの種類		平均 %	測定範囲	
	Serum		97	96% - 98%	
	Cell culture media		95	93% - 97%	
	Hep Plasma		77	76% - 79%	
全工程の試験時間	1h 30m				
ステップ	One step assay				
種交差性	交差種: Cow				
製品の概要	Bovine IL-13 ELISA kit (ab272466) is a single-wash 90 min sandwich ELISA designed for the quantitative measurement of Bovine IL-13 protein in serum, plasma and cell culture supernatant. It				

uses our proprietary SimpleStep ELISA® technology. Quantitate Human Neurofilament H with 3.4 pg/mL sensitivity.

SimpleStep ELISA® technology employs capture antibodies conjugated to an affinity tag that is recognized by the monoclonal antibody used to coat our SimpleStep ELISA® plates. This approach to sandwich ELISA allows the formation of the antibody-analyte sandwich complex in a single step, significantly reducing assay time. See the SimpleStep ELISA® protocol summary in the image section for further details. Our SimpleStep ELISA® technology provides several benefits:

- Single-wash protocol reduces assay time to 90 minutes or less
- High sensitivity, specificity and reproducibility from superior antibodies
- Fully validated in biological samples
- 96-wells plate breakable into 12 x 8 wells strips

A 384-well SimpleStep ELISA® microplate (**ab203359**) is available to use as an alternative to the 96-well microplate provided with SimpleStep ELISA® kits.

特記事項

Interleukin-13 (IL-13) is a secreted immunoregulatory cytokine in the IL-4/IL-13 family that is linked to allergic reactions and cancer pathogenesis. IL-13 inhibits inflammatory cytokine production and promotes immunoglobulin class switching on B-cells. IL-13 is linked to allergic rhinitis, a common disease of complex inheritance characterized by mucosal inflammation caused by allergen exposure.

試験プラットフォーム

Pre-coated microplate (12 x 8 well strips)

製品の特性

保存方法

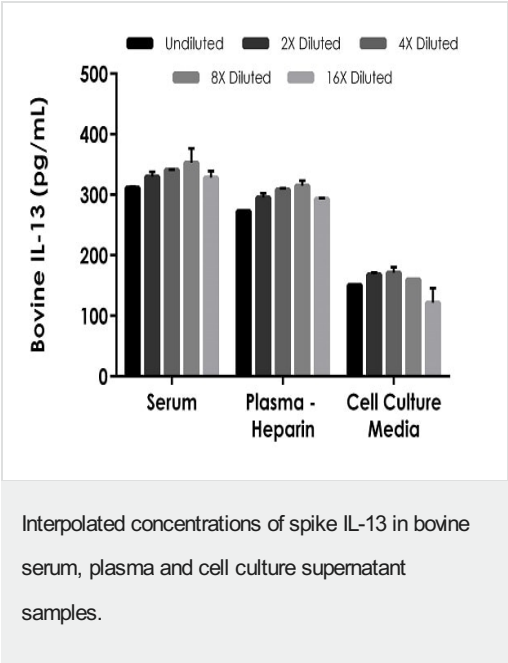
Store at +4°C. Please refer to protocols.

内容	1 x 96 tests
10X Bovine IL-13 Capture Antibody	1 x 600µl
10X Bovine IL-13 Detector Antibody	1 x 600µl
10X Wash Buffer PT (ab206977)	1 x 20ml
Antibody Diluent 5BI	1 x 6ml
Bovine IL-13 Lyophilized Recombinant Protein	2 vials
Plate Seals	1 unit
Sample Diluent NS (ab193972)	1 x 50ml
SimpleStep Pre-Coated 96-Well Microplate (ab206978)	1 unit

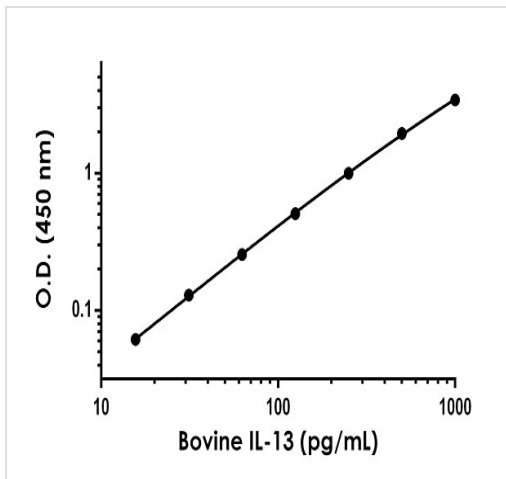
内容	1 x 96 tests
Stop Solution	1 x 12ml
TMB Development Solution	1 x 12ml

機能	Cytokine (PubMed:8096327, PubMed:8097324). Inhibits inflammatory cytokine production (PubMed:8096327). Synergizes with IL2 in regulating interferon-gamma synthesis (PubMed:8096327). May be critical in regulating inflammatory and immune responses (PubMed:8096327, PubMed:8097324). Positively regulates IL31RA expression in macrophages.
関連疾患	Allergic rhinitis
配列類似性	Belongs to the IL-4/IL-13 family.
細胞内局在	Secreted.

画像

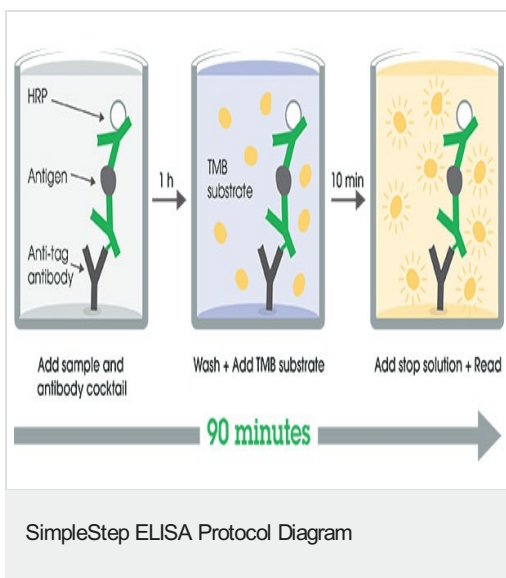


The concentrations of IL-13 were measured in duplicates, interpolated from the IL-13 standard curves and corrected for sample dilution. Undiluted samples are as follows: serum 50%, plasma (heparin) 50%, cell culture media (RPMI 1640 containing 10% fetal bovine serum) 50%. The interpolated dilution factor corrected values are plotted (mean +/- SD, n=2).



Example of bovine IL-13 standard curve in Sample Diluent NS.

The IL-13 standard curve was prepared as described in Section 10. Raw data values are shown in the table. Background-subtracted data values (mean \pm SD) are graphed.



SimpleStep ELISA technology allows the formation of the antibody-antigen complex in one single step, reducing assay time to 90 minutes. Add samples or standards and antibody mix to wells all at once, incubate, wash, and add your final substrate. See protocol for a detailed step-by-step guide.

Powered by recombinant antibodies

<p>Research with confidence Consistent and reproducible results</p>	<p>Long-term and scalable supply Recombinant technology</p>
<p>Success from the first experiment Confirmed specificity</p>	<p>Ethical standards compliant Animal-free production</p>

Sandwich ELISA - Bovine IL-13 ELISA Kit (ab272466)

To learn more about the advantages of recombinant antibodies see [here](#).

Our Abpromise to you: Quality guaranteed and expert technical support

- Replacement or refund for products not performing as stated on the datasheet
- Valid for 12 months from date of delivery
- Response to your inquiry within 24 hours

- We provide support in Chinese, English, French, German, Japanese and Spanish
- Extensive multi-media technical resources to help you
- We investigate all quality concerns to ensure our products perform to the highest standards

If the product does not perform as described on this datasheet, we will offer a refund or replacement. For full details of the Abpromise, please visit <https://www.abcam.co.jp/abpromise> or contact our technical team.

Terms and conditions

- Guarantee only valid for products bought direct from Abcam or one of our authorized distributors