

anti-Bevacizumab ELISA Kit ab237658

画像数 1

製品の概要

製品名 anti-Bevacizumab ELISA Kit

検出方法 Colorimetric

再現性 Intra-Assay (同時再現性)

サンプル	N	平均値	SD	CV%
Overall				< 15%

Inter-Assay (日差再現性)

サンプル	N	平均値	SD	CV%
Overall				< 15%

サンプルの種類 Serum, Plasma

アッセイタイプ Sandwich (quantitative)

検出感度 30 ng/ml

検出範囲 62 ng/ml - 500 ng/ml

添加回収試験 特定サンプルでの回収試験

サンプルの種類	平均 %	測定範囲
Serum		85% - 115%

ステップ Multiple steps standard assay

種交差性 交差種: Human

製品の概要 anti-Bevacizumab ELISA Kit (ab237658) is designed to quantify/measure the antibody against Bevacizumab with high specificity and sensitivity in biological matrices.

特記事項 This product is manufactured by BioVision, an Abcam company and was previously called E4389 BioSim™ anti-Bevacizumab (Human) ELISA Kit. E4389-100 is the same size as the 96 test size of ab237658.

試験プラットフォーム Microplate

製品の特性

保存方法

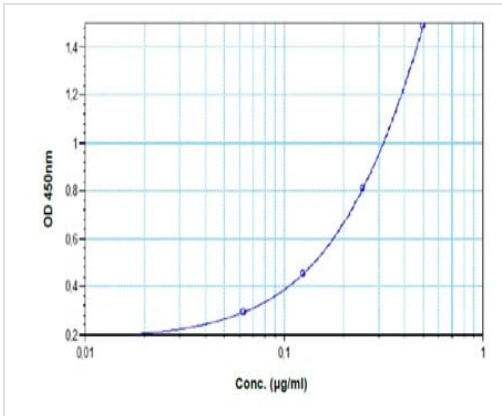
Store at +4°C. Please refer to protocols.

内容	96 tests
Micro ELISA Plate	1 unit
Bevacizumab standard 1	1 x 1ml
Bevacizumab standard 2	1 x 1ml
Bevacizumab Standard 3	1 x 1ml
Bevacizumab Standard 4	1 x 1ml
Bevacizumab Standard 5	1 x 1ml
Bevacizumab Standard 6	1 x 1ml
Bevacizumab Standard 7	1 x 1ml
Assay Buffer	1 x 50ml
Confirmation Reagent	1 x 12ml
Peroxidase Conjugate	1 x 12ml
TMB substrate	1 x 12ml
Stop Solution	1 x 12ml
Wash buffer (20X)	1 x 50ml
Plate sealers	2 tablets

関連性

Bevacizumab is a recombinant human IgG1 monoclonal antibody specific for all human vascular endothelial growth factor-A (VEGF-A) isoforms. The humanized anti-VEGF monoclonal antibody, bevacizumab, has been approved by the FDA as a first-line treatment for metastatic colorectal cancer in combination with chemotherapy. The pharmacokinetic properties of bevacizumab in several species have been previously described and are consistent with a typical humanized monoclonal antibody. It was shown in the literature that the surveillance of circulating concentration during maintenance therapy represents a direct and/or indirect factor for some other side effects. Identification of biomarkers for (non-)response and risk factors for adverse drug reactions that might be related to serum concentrations and maintaining the effective concentration of Bevacizumab in order to potentially avoid some side effects with a reliable method might be beneficial.

画像



Typical standard curve.

Typical Standard Curve: This standard curve is for demonstration only. A standard curve must be run with each assay.

Please note: All products are "FOR RESEARCH USE ONLY. NOT FOR USE IN DIAGNOSTIC PROCEDURES"

Our Abpromise to you: Quality guaranteed and expert technical support

- Replacement or refund for products not performing as stated on the datasheet
- Valid for 12 months from date of delivery
- Response to your inquiry within 24 hours
- We provide support in Chinese, English, French, German, Japanese and Spanish
- Extensive multi-media technical resources to help you
- We investigate all quality concerns to ensure our products perform to the highest standards

If the product does not perform as described on this datasheet, we will offer a refund or replacement. For full details of the Abpromise, please visit <https://www.abcam.co.jp/abpromise> or contact our technical team.

Terms and conditions

- Guarantee only valid for products bought direct from Abcam or one of our authorized distributors