

Akt (pS473) + total Akt ELISA Kit ab126433

★★★★☆ **1 Abreviews** **14 References** 画像数 5

製品の概要

製品名	Akt (pS473) + total Akt ELISA Kit
検出方法	Colorimetric
サンプルの種類	Cell Lysate
アッセイタイプ	Semi-quantitative
全工程の試験時間	5h 00m
ステップ	Multiple steps standard assay
種交差性	交差種: Mouse, Rat, Human
製品の概要	<p>ab126433 is a very rapid, convenient and sensitive assay kit that can monitor the activation or function of important biological pathways in cell lysates. By determining phosphorylated Akt protein in your experimental model system, you can verify pathway activation in your cell lysates. You can simultaneously measure numerous different cell lysates without spending excess time and effort in performing a Western Blot analysis.</p>

This Sandwich ELISA kit is an in vitro enzyme-linked immunosorbent assay for the measurement of phospho-Akt (Ser473) and total Akt in human, mouse and rat cell lysates (help normalize the results of phospho-Akt from different cell lysate being compared). A pan Akt antibody has been coated onto a 96-well plate. Samples are pipetted into the wells and Akt present in a sample is bound to the wells by the immobilized antibody. The wells are washed and anti-phospho-Akt (Ser473) or anti-pan-Akt is used to detect phosphorylated or total Akt. After washing away unbound antibody, HRP-conjugated anti-rabbit IgG is pipetted to the wells. The wells are again washed, a TMB substrate solution is added to the wells and color develops in proportion to the amount of Akt (Ser473) or total Akt bound. The Stop Solution changes the color from blue to yellow, and the intensity of the color is measured at 450 nm.

Get higher sensitivity in only 90 minutes with AKT 1/2/3 pS473 + AKT1 ELISA Kit ([ab176657](#)) from our SimpleStep ELISA® range.

特記事項	<p>Abcam has not and does not intend to apply for the REACH Authorisation of customers' uses of products that contain European Authorisation list (Annex XIV) substances.</p> <p>It is the responsibility of our customers to check the necessity of application of REACH Authorisation, and any other relevant authorisations, for their intended uses.</p>
------	--

試験プラットフォーム	Microplate
------------	------------

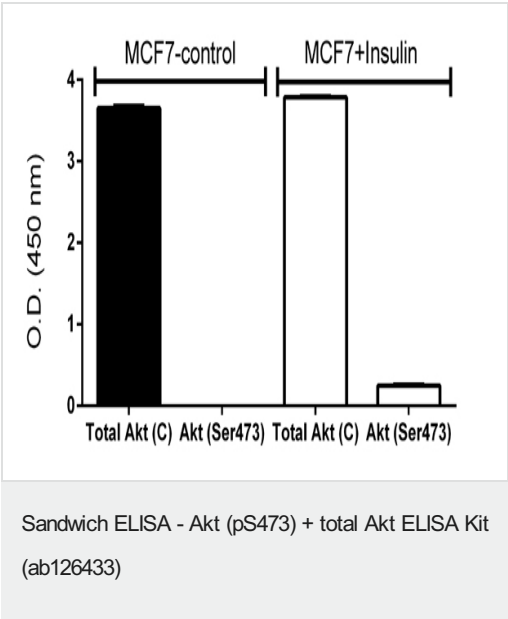
製品の特性

保存方法Store at -20°C. Please refer to protocols.

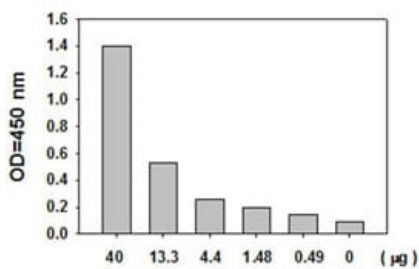
内容	1 x 96 tests
500X HRP-conjugated anti-rabbit IgG	1 x 25µl
20X Wash Buffer	1 x 25ml
2X Cell Lysis Buffer	1 x 5ml
5X Assay Diluent	1 x 15ml
Akt Microplate (12 strips x 8 wells) coated with anti-pan Akt antibody	1 unit
Detection Antibody Akt (Ser473): rabbit anti-phospho-Akt (Ser473)	1 vial
Detection Antibody Akt: rabbit anti-pan-Akt	1 vial
Positive Control: lyophilized NIH3T3 cell lysate	1 vial
Stop Solution	1 x 8ml
TMB One-Step Substrate Reagent	1 x 12ml

細胞内局在AKT1/2/3: Cytoplasm. Membrane. Membrane-associated after cell stimulation leading to its translocation. AKT1 (total): Cytoplasm. Nucleus. Cell membrane. Nucleus after activation by integrin-linked protein kinase 1 (ILK1). Nuclear translocation is enhanced by interaction with TCL1A. Phosphorylation on Tyr-176 by TNK2 results in its localization to the cell membrane where it is targeted for further phosphorylations on Thr-308 and Ser-473 leading to its activation and the activated form translocates to the nucleus.

画像

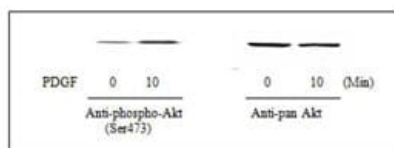


MCF7 cells were stimulated for five minutes with 1 ug x mL⁻¹ of insulin ([ab123768](#)). Cell lysates were assessed for total Akt and Akt(pS473), shown as OD (450 nm) after background signal was subtracted (duplicates +/- SD).



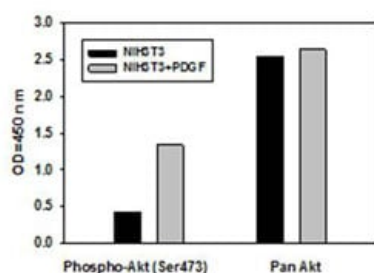
Sandwich ELISA - Akt (pS473) + total Akt ELISA Kit (ab126433)

The NIH3T3 cells were treated with recombinant human PDGF for 10 minutes to induce phosphorylation of Akt. Serial dilutions of lysates were analyzed in this ELISA.



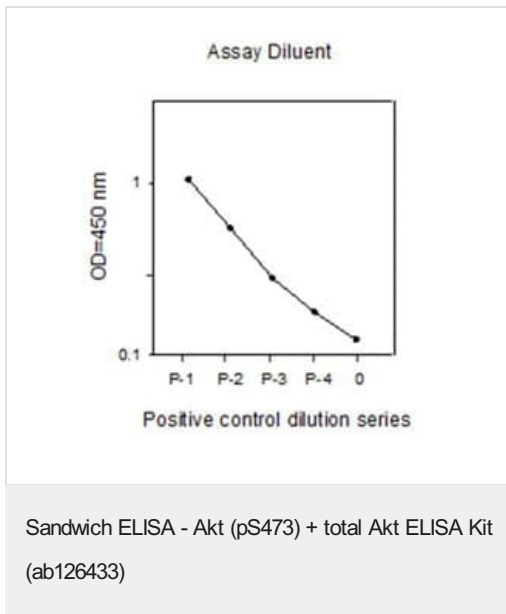
Western blot - Akt (pS473) + total Akt ELISA Kit (ab126433)

NIH3T3 cells were treated or untreated with recombinant human PDGF for 10 min. Cell lysates were analyzed by Western Blot.



Sandwich ELISA - Akt (pS473) + total Akt ELISA Kit (ab126433)

NIH3T3 cells were treated or untreated with recombinant human PDGF for 10 min. Cell lysates were analyzed using this phosphoELISA.



A431 cells were treated with recombinant human EGF at 37°C for 20 min. Solubilize cells at 4×10^7 cells/ml in Cell Lysate Buffer. Serial dilutions of lysates were analyzed in this ELISA.

Please note: All products are "FOR RESEARCH USE ONLY. NOT FOR USE IN DIAGNOSTIC PROCEDURES"

Our Abpromise to you: Quality guaranteed and expert technical support

- Replacement or refund for products not performing as stated on the datasheet
- Valid for 12 months from date of delivery
- Response to your inquiry within 24 hours
- We provide support in Chinese, English, French, German, Japanese and Spanish
- Extensive multi-media technical resources to help you
- We investigate all quality concerns to ensure our products perform to the highest standards

If the product does not perform as described on this datasheet, we will offer a refund or replacement. For full details of the Abpromise, please visit <https://www.abcam.co.jp/abpromise> or contact our technical team.

Terms and conditions

- Guarantee only valid for products bought direct from Abcam or one of our authorized distributors