

### ChIP Kit ab500

★★★★☆ [4 Abreviews](#) [134 References](#) [画像数 4](#)

#### 製品の概要

製品名	ChIP Kit
サンプルの種類	Adherent cells, Suspension cells
製品の概要	<p>ChIP kit ab500 provides a protocol and reagents for running ChIP assays including:</p> <ul style="list-style-type: none"> <li>- cell lysis and chromatin extraction</li> <li>- chromatin shearing and DNA fragment length analysis</li> <li>- immunoprecipitation and DNA purification</li> </ul> <p>DNA produced using the kit can be analyzed using qPCR.</p> <p>The kit has been validated for ChIP assays with mammalian samples.</p>

**Chinese protocol available.** See protocols section below.

#### 特記事項

This kit uses Protein A sepharose beads for antibody pulldown. See table below for Protein A and Protein G binding affinities with antibodies from commonly used species. For other species of antibody, consult the table in the protocol booklet.

Species raised in	Isotype	Protein A binding affinity	Protein G binding affinity
Rabbit	All isotypes	+++	++
Goat	All isotypes	-	++
Mouse	IgG1	+	+++
	IgG2a	+++	+++
	IgG2b	++	++

	IgG3	+	+
	IgM	Use anti-mouse IgM	

### ChIP assay products and guides

Find more [ChIP assay / chromatin immunoprecipitation](#) resources and products, [ChIP antibody](#) products, and other [ChIP assay kits and related reagents](#).

Abcam has not and does not intend to apply for the REACH Authorisation of customers' uses of products that contain European Authorisation list (Annex XIV) substances.

It is the responsibility of our customers to check the necessity of application of REACH Authorisation, and any other relevant authorisations, for their intended uses.

### アプリケーション

**適用あり:** ChIP

**適用なし:** ChIP-seq

### 製品の特性

#### 保存方法

Please refer to protocols.

内容	1 kit
1.25M Glycine	1 x 10ml
Buffer A	1 x 10ml
Buffer B	1 x 30ml
Buffer C	1 x 30ml
Buffer D	1 x 3ml
ChIP Buffer 5X	1 x 84ml
DNA Purifying Slurry	1 x 4ml
<b><u>ab1791 - H3 antibody</u></b>	1 x 25µg
PCR-Grade Water	1 x 10.2ml
Protease Inhibitors	1 tablet
Protein A Beads Unblocked	1 x 960µl
Proteinase K	1 x 40µl

### アプリケーション

#### The Abpromise guarantee

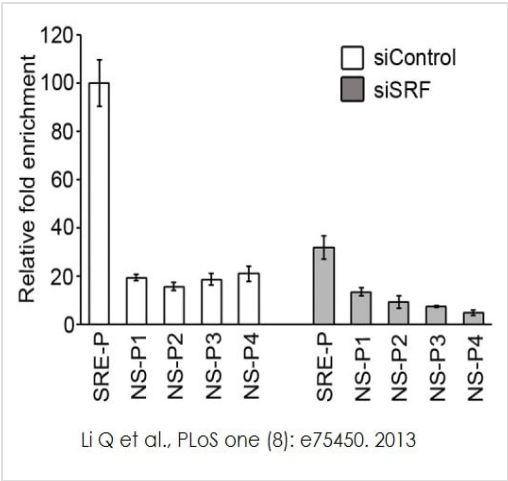
**Abpromise保証は、** 次のテスト済みアプリケーションにおけるab500の使用に適用されます

アプリケーションノートには、推奨の開始希釈率がありますが、適切な希釈率につきましてはご確認ください。

アプリケーション	Abreviews	特記事項
ChIP		Use at an assay dependent concentration.

追加情報Is unsuitable for ChIP-seq.

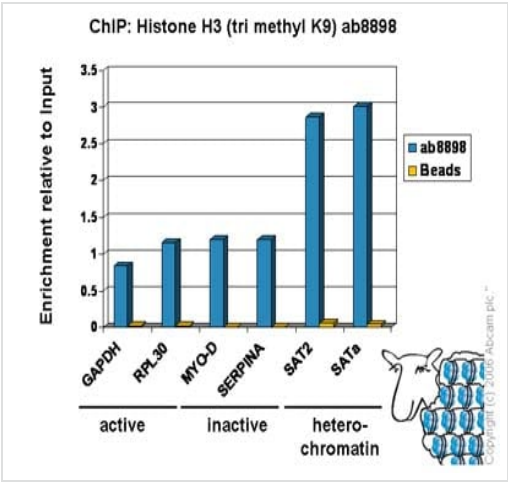
画像



Chromatin immunoprecipitation assay was performed to define the interaction of serum response factor (SRF) with the intragenic serum response element (SRE) regulatory motif in mouse using ab500 ChIP Kit.

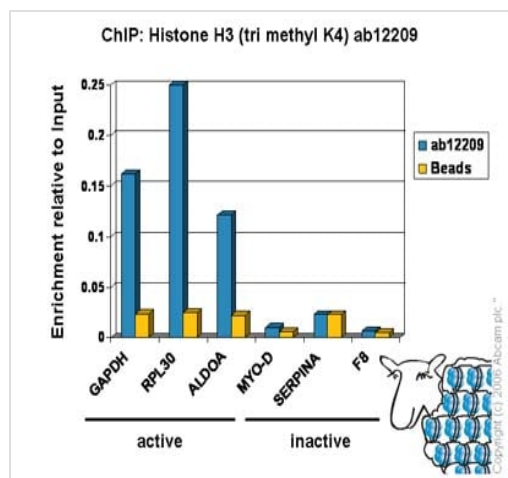
ChIP

Li Q., PLoS One 8(9). Fig 2c. doi: 10.1371/journal.pone.0075470. Reproduced under the Creative Commons license <http://creativecommons.org/licenses/by/4.0/>



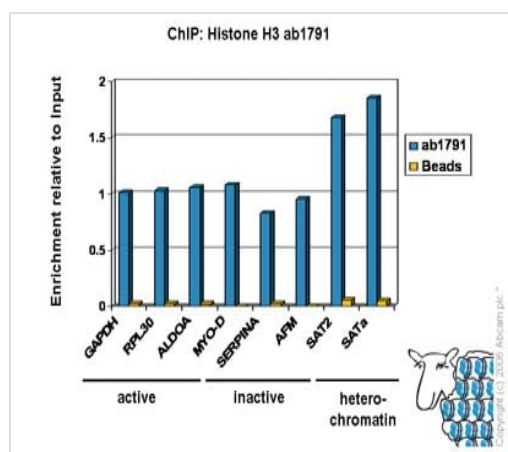
**Chromatin immunoprecipitation using ab500 ChIP Kit and Histone H3 (tri methyl K9) antibody (ab8898).** Chromatin was prepared from HeLa cells using the Abcam ChIP kit protocol. Cells were fixed with formaldehyde for 10 min. ChIP was performed with 2 µg of **ab8898** (blue). No antibody was added to the beads control (yellow). Immunoprecipitated DNA was quantified by real time PCR (Taqman approach for active/inactive loci, Sybr green approach for heterochromatic loci). Primers and probes are located in the first kb of transcribed region.

ChIP - ChIP Kit (ab500)



ChIP - ChIP Kit (ab500)

**Chromatin immunoprecipitation using ab500 ChIP Kit and Histone H3 (tri methyl K4) antibody (ab12209).** Chromatin was prepared from HeLa cells using the Abcam ChIP kit protocol. Cells were fixed with formaldehyde for 10 min. ChIP was performed with 5 µg of **ab12209** (blue). No antibody was added to the beads control (yellow). Immunoprecipitated DNA was quantified by real time PCR (Taqman approach for active/inactive loci). Primers and probes are located in the first kb of the transcribed region.



ChIP - ChIP Kit (ab500)

**Chromatin immunoprecipitation using ab500 ChIP Kit and Histone H3 antibody (ab1791).** Chromatin was prepared from HeLa cells using the Abcam ChIP kit protocol. Cells were fixed with formaldehyde for 10 min. ChIP was performed with 2 µg of **ab1791** (blue). No antibody was added to the beads control (yellow). Immunoprecipitated DNA was quantified by real time PCR (Taqman approach for active/inactive loci, Sybr green approach for heterochromatic loci). Primers and probes are located in the first kb of the transcribed region.

**Please note:** All products are "FOR RESEARCH USE ONLY. NOT FOR USE IN DIAGNOSTIC PROCEDURES"

### Our Abpromise to you: Quality guaranteed and expert technical support

- Replacement or refund for products not performing as stated on the datasheet
- Valid for 12 months from date of delivery
- Response to your inquiry within 24 hours
- We provide support in Chinese, English, French, German, Japanese and Spanish
- Extensive multi-media technical resources to help you
- We investigate all quality concerns to ensure our products perform to the highest standards

If the product does not perform as described on this datasheet, we will offer a refund or replacement. For full details of the Abpromise, please visit <https://www.abcam.co.jp/abpromise> or contact our technical team.

#### **Terms and conditions**

---

- Guarantee only valid for products bought direct from Abcam or one of our authorized distributors