

SOCS5 overexpression 293T lysate (whole cell) ab94296

画像数 2

医薬用外劇物

製品の概要

製品名	SOCS5 overexpression 293T lysate (whole cell)
特記事項	ab94296 is a 293T cell transfected lysate in which Human SOCS5 has been transiently over-expressed using a pCMV-SOCS5 plasmid. The lysate is provided in 1 x Sample Buffer.
アプリケーション	適用あり: WB

製品の特性

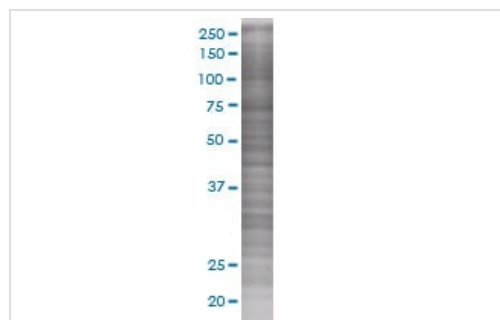
Mycoplasma free	Yes
製品の状態	Liquid
保存方法	Shipped on dry ice. Upon delivery aliquot and store at -20°C. Avoid freeze / thaw cycles.
バッファー	Constituents: 0.01% Bromophenol blue, 2.3% Beta mercaptoethanol, 2% Sodium lauryl sulfate, 0.788% Tris HCl, 10% Glycerol (glycerin, glycerine)
背景	Function: SOCS family proteins form part of a classical negative feedback system that regulates cytokine signal transduction. May be a substrate-recognition component of a SCF-like ECS (Elongin BC-CUL2/5-SOCS-box protein) E3 ubiquitin-protein ligase complex which mediates the ubiquitination and subsequent proteasomal degradation of target proteins. Inhibits for instance EGF signaling by mediating the degradation of the EGF receptor/EGFR. Involved in the regulation of T-helper cell differentiation by inhibiting of the IL4 signaling pathway which promotes differentiation into the Th2 phenotype. Can also partially inhibit IL6 and LIF signaling. Pathway: Protein modification; protein ubiquitination. Similarity: Contains 1 SH2 domain. Contains 1 SOCS box domain. Domain: The SOCS box domain mediates the interaction with the Elongin BC complex, an adapter module in different E3 ubiquitin ligase complexes. PTM: Phosphorylated. Phosphorylation is induced by EGF.

アプリケーション

The Abpromise guarantee **Abpromise保証は、次のテスト済みアプリケーションにおけるab94296の使用に適用されます**
アプリケーションノートには、推奨の開始希釈率がありますが、適切な希釈率につきましてはご検討ください。

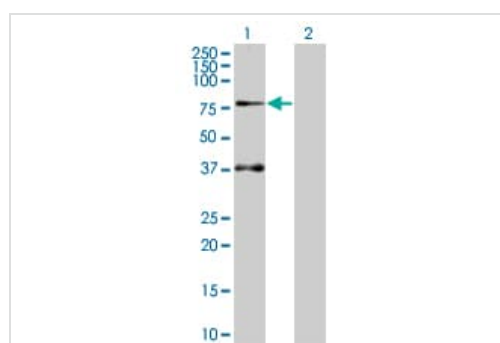
アプリケーション	Abreviews	特記事項
WB		Use at an assay dependent dilution.

画像



SDS-PAGE - SOCS5 overexpression 293T lysate
(whole cell) (ab94296)

ab94296 at 15µg/lane on an SDS-PAGE gel.



Western blot - SOCS5 overexpression 293T lysate
(whole cell) (ab94296)

All lanes : Anti-SOCS5 antibody (**ab88096**) at 1/500 dilution

Lane 1 : SOCS5 overexpression 293T lysate (whole cell)
(ab94296)

Lane 2 : 293T non-transfected lysate

Lysates/proteins at 25 µg per lane.

Secondary

All lanes : Goat Anti-mouse IgG (H and L) HRP conjugated at
1/2500 dilution

Please note: All products are "FOR RESEARCH USE ONLY. NOT FOR USE IN DIAGNOSTIC PROCEDURES"

Our Abpromise to you: Quality guaranteed and expert technical support

- Replacement or refund for products not performing as stated on the datasheet
- Valid for 12 months from date of delivery
- Response to your inquiry within 24 hours
- We provide support in Chinese, English, French, German, Japanese and Spanish
- Extensive multi-media technical resources to help you
- We investigate all quality concerns to ensure our products perform to the highest standards

If the product does not perform as described on this datasheet, we will offer a refund or replacement. For full details of the Abpromise, please visit <https://www.abcam.co.jp/abpromise> or contact our technical team.

Terms and conditions

- Guarantee only valid for products bought direct from Abcam or one of our authorized distributors