

Product datasheet

Rsk 2 / MAPKAP Kinase 1b overexpression 293T lysate (whole cell) ab94181

画像数 2

医薬用外劇物

製品の概要

製品名	Rsk 2 / MAPKAP Kinase 1b overexpression 293T lysate (whole cell)
特記事項	ab94181 is a 293T cell transfected lysate in which Human Rsk 2 / MAPKAP Kinase 1b has been transiently over-expressed using a pCMV-Rsk 2 / MAPKAP Kinase 1b plasmid. The lysate is provided in 1 x Sample Buffer.
アプリケーション	適用あり: WB

製品の特性

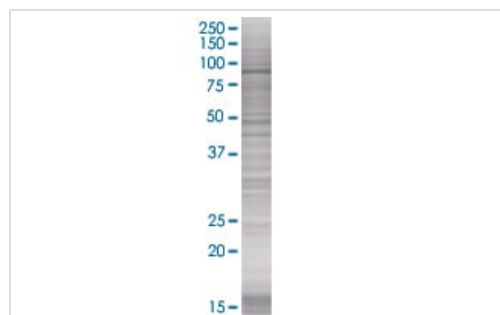
Mycoplasma free	Yes
製品の状態	Liquid
保存方法	Shipped on dry ice. Upon delivery aliquot and store at -20°C. Avoid freeze / thaw cycles.
バッファー	Constituents: 0.01% Bromophenol blue, 2.3% Beta mercaptoethanol, 2% Sodium lauryl sulfate, 0.788% Tris HCl, 10% Glycerol (glycerin, glycerine)
背景	Function: Serine/threonine kinase that may play a role in mediating the growth-factor and stress induced activation of the transcription factor CREB. Tissue specificity: Expressed in many tissues, highest levels in skeletal muscle. Disease: Defects in RPS6KA3 are the cause of Coffin-Lowry syndrome (CLS) [MIM:303600]; an X-linked dominant disorder characterized by severe mental retardation with facial and digital dysmorphisms, and progressive skeletal deformations. Similarity: Belongs to the protein kinase superfamily. AGC Ser/Thr protein kinase family. S6 kinase subfamily. Contains 1 AGC-kinase C-terminal domain. Contains 2 protein kinase domains. PTM: Autophosphorylated on Ser-386, as part of the activation process. Ser-227 phosphorylation promotes Ser-386 phosphorylation and leads to basal activation. Full activation by growth factors requires additional phosphorylation on Ser-369.

アプリケーション

The Abpromise guarantee **Abpromise保証は、次のテスト済みアプリケーションにおけるab94181の使用に適用されます**
アプリケーションノートには、推奨の開始希釈率がありますが、適切な希釈率につきましてはご検討ください。

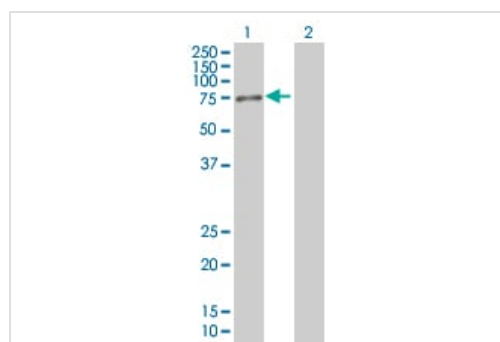
アプリケーション	Abreviews	特記事項
WB		Use at an assay dependent dilution.

画像



SDS-PAGE - Rsk 2 / MAPKAP Kinase 1b
overexpression 293T lysate (whole cell) (ab94181)

ab94181 at 15µg/lane on an SDS-PAGE gel.



Western blot - Rsk 2 / MAPKAP Kinase 1b
overexpression 293T lysate (whole cell) (ab94181)

All lanes : Anti-Rsk 2 / MAPKAP Kinase 1b antibody ([ab76886](#)) at 1/500 dilution

Lane 1 : Rsk 2 / MAPKAP Kinase 1b overexpression 293T lysate (whole cell) (ab94181)

Lane 2 : 293T non-transfected lysate

Lysates/proteins at 25 µg per lane.

Secondary

All lanes : Goat Anti-mouse IgG (H and L) HRP conjugated at 1/2500 dilution

Please note: All products are "FOR RESEARCH USE ONLY. NOT FOR USE IN DIAGNOSTIC PROCEDURES"

Our Abpromise to you: Quality guaranteed and expert technical support

- Replacement or refund for products not performing as stated on the datasheet
- Valid for 12 months from date of delivery
- Response to your inquiry within 24 hours
- We provide support in Chinese, English, French, German, Japanese and Spanish
- Extensive multi-media technical resources to help you
- We investigate all quality concerns to ensure our products perform to the highest standards

If the product does not perform as described on this datasheet, we will offer a refund or replacement. For full details of the Abpromise, please visit <https://www.abcam.co.jp/abpromise> or contact our technical team.

Terms and conditions

- Guarantee only valid for products bought direct from Abcam or one of our authorized distributors