

PLK4 overexpression 293T lysate (whole cell) ab94256

画像数 2

医薬用外劇物

製品の概要

製品名	PLK4 overexpression 293T lysate (whole cell)
特記事項	ab94256 is a 293T cell transfected lysate in which Human PLK4 has been transiently over-expressed using a pCMV-PLK4 plasmid. The lysate is provided in 1X Sample Buffer.
アプリケーション	適用あり: WB, SDS-PAGE

製品の特性

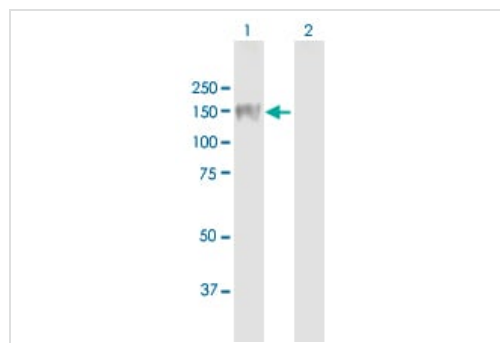
Mycoplasma free	Yes
製品の状態	Liquid
保存方法	Shipped on dry ice. Upon delivery aliquot and store at -20°C. Avoid freeze / thaw cycles.
バッファー	Constituents: 0.01% Bromophenol blue, 2.3% Beta mercaptoethanol, 2% Sodium lauryl sulfate, 0.788% Tris HCl, 10% Glycerol (glycerin, glycerine)
背景	Function: Serine/threonine-protein kinase that plays a central role in centriole duplication. Able to trigger procentriole formation on the surface of the parental centriole cylinder, leading to the recruitment of centriole biogenesis proteins such as SASS6, CENPJ/CPAP, CP110, CEP135 and gamma-tubulin. When overexpressed, it is able to induce centrosome amplification through the simultaneous generation of multiple procentrioles adjoining each parental centriole during S phase. Its central role in centriole replication suggests a possible role in tumorigenesis, centrosome aberrations being frequently observed in tumors. Also involved in trophoblast differentiation by phosphorylating HAND1, leading to disrupt the interaction between HAND1 and MDFIC and activate HAND1. Phosphorylates CDC25C and CHEK2/CHK2. Similarity: Belongs to the protein kinase superfamily. Ser/Thr protein kinase family. CDC5/Polo subfamily. Contains 1 POLO box domain. Contains 1 protein kinase domain. PTM: Ubiquitinated; leading to its degradation by the proteasome. Tyrosine-phosphorylated by TEC.

アプリケーション

The Abpromise guarantee Abpromise保証は、次のテスト済みアプリケーションにおけるab94256の使用に適用されます
 アプリケーションノートには、推奨の開始希釈率がありますが、適切な希釈率につきましてはご検討ください。

アプリケーション	Abreviews	特記事項
WB		Use at an assay dependent concentration.
SDS-PAGE		Use at an assay dependent concentration.

画像



Western blot - PLK4 overexpression 293T lysate (whole cell) (ab94256)

All lanes : PLK4 MaxPab mouse polyclonal antibody at 1/1000 dilution

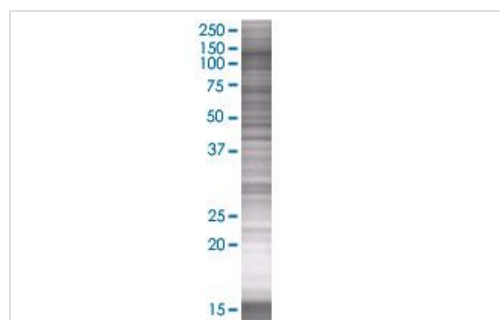
Lane 1 : PLK4 overexpression 293T lysate (whole cell) (ab94256)

Lane 2 : Non-transfected lysate

Lysates/proteins at 15 µl per lane.

Secondary

All lanes : Goat Anti-Mouse IgG (H&L)-HRP Conjugate



SDS-PAGE - PLK4 overexpression 293T lysate (whole cell) (ab94256)

ab94256 at 15µg/lane on an SDS-PAGE gel.

Please note: All products are "FOR RESEARCH USE ONLY. NOT FOR USE IN DIAGNOSTIC PROCEDURES"

Our Abpromise to you: Quality guaranteed and expert technical support

- Replacement or refund for products not performing as stated on the datasheet
- Valid for 12 months from date of delivery
- Response to your inquiry within 24 hours
- We provide support in Chinese, English, French, German, Japanese and Spanish
- Extensive multi-media technical resources to help you
- We investigate all quality concerns to ensure our products perform to the highest standards

If the product does not perform as described on this datasheet, we will offer a refund or replacement. For full details of the Abpromise, please visit <https://www.abcam.co.jp/abpromise> or contact our technical team.

Terms and conditions

- Guarantee only valid for products bought direct from Abcam or one of our authorized distributors