

# Liver Carboxylesterase 1 overexpression 293T lysate (whole cell) ab94047

画像数 2

医薬用外劇物

### 製品の概要

製品名	Liver Carboxylesterase 1 overexpression 293T lysate (whole cell)
特記事項	ab94047 is a 293T cell transfected lysate in which Human Liver Carboxylesterase 1 has been transiently over-expressed using a pCMV-Liver Carboxylesterase 1 plasmid. The lysate is provided in 1X Sample Buffer.
アプリケーション	適用あり: WB

### 製品の特性

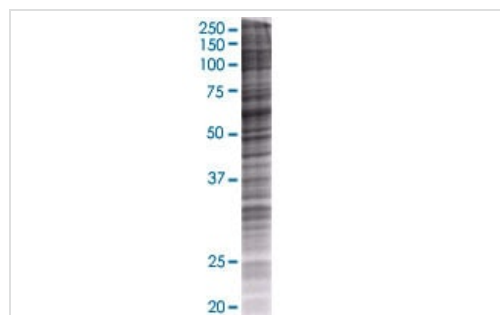
Mycoplasma free	Yes
製品の状態	Liquid
保存方法	Shipped on dry ice. Upon delivery aliquot and store at -20°C. Avoid freeze / thaw cycles.
バッファー	Constituents: 0.01% Bromophenol blue, 2.3% Beta mercaptoethanol, 2% Sodium lauryl sulfate, 0.788% Tris HCl, 10% Glycerol (glycerin, glycerine)
背景	Function: Involved in the detoxification of xenobiotics and in the activation of ester and amide prodrugs. Hydrolyzes aromatic and aliphatic esters, but has no catalytic activity toward amides or a fatty acyl-CoA ester. Hydrolyzes the methyl ester group of cocaine to form benzoylecgonine. Catalyzes the transesterification of cocaine to form cocaethylene. Displays fatty acid ethyl ester synthase activity, catalyzing the ethyl esterification of oleic acid to ethyloleate. PTM: Contains sialic acid. Cleavage of the signal sequence can occur at 2 positions, either between Trp-17 and Gly-18 or between Gly-18 and His-19. Similarity: Belongs to the type-B carboxylesterase/lipase family. Tissue specificity: Expressed predominantly in liver with lower levels in heart and lung.

### アプリケーション

The Abpromise guarantee      Abpromise保証は、 次のテスト済みアプリケーションにおけるab94047の使用に適用されます  
アプリケーションノートには、推奨の開始希釈率がありますが、適切な希釈率につきましてはご検討ください。

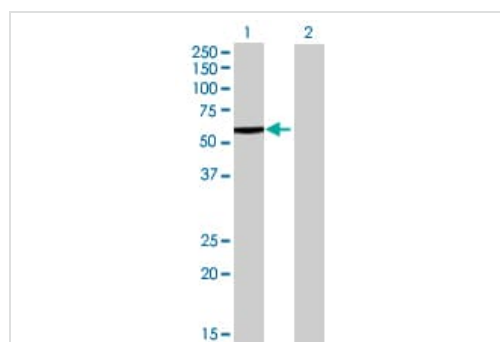
アプリケーション	Abreviews	特記事項
WB		Use at an assay dependent dilution.

## 画像



SDS-PAGE - Liver Carboxylesterase 1  
overexpression 293T lysate (whole cell) (ab94047)

ab94047 at 15µg/lane on an SDS-PAGE gel.



Western blot - Liver Carboxylesterase 1  
overexpression 293T lysate (whole cell) (ab94047)

**All lanes :** Anti-Liver Carboxylesterase 1/CES1 antibody  
(**ab89779**) at 1/500 dilution

**Lane 1 :** Liver Carboxylesterase 1 overexpression 293T lysate  
(whole cell) (ab94047)

**Lane 2 :** 293T non-transfected lysate

Lysates/proteins at 25 µg per lane.

### Secondary

**All lanes :** Goat Anti-mouse IgG (H and L) HRP conjugated at  
1/2500 dilution

**Please note:** All products are "FOR RESEARCH USE ONLY. NOT FOR USE IN DIAGNOSTIC PROCEDURES"

## Our Abpromise to you: Quality guaranteed and expert technical support

- Replacement or refund for products not performing as stated on the datasheet
- Valid for 12 months from date of delivery
- Response to your inquiry within 24 hours
- We provide support in Chinese, English, French, German, Japanese and Spanish
- Extensive multi-media technical resources to help you
- We investigate all quality concerns to ensure our products perform to the highest standards

If the product does not perform as described on this datasheet, we will offer a refund or replacement. For full details of the Abpromise, please visit <https://www.abcam.co.jp/abpromise> or contact our technical team.

## Terms and conditions

---

- Guarantee only valid for products bought direct from Abcam or one of our authorized distributors