

### KDS overexpression 293T lysate (whole cell) ab94147

画像数 2

医薬用外劇物

#### 製品の概要

製品名	KDS overexpression 293T lysate (whole cell)
特記事項	ab94147 is a 293T cell transfected lysate in which Human JIK has been transiently over-expressed using a pCMV-JIK. The lysate is provided in 1X Sample Buffer.
アプリケーション	適用あり: WB

#### 製品の特性

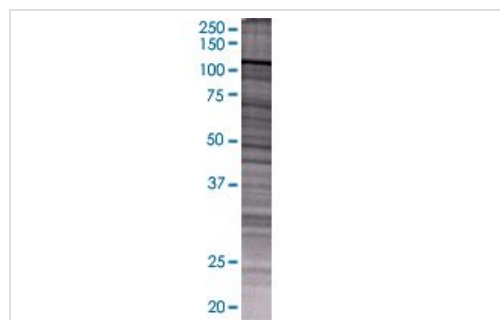
Mycoplasma free	Yes
製品の状態	Liquid
保存方法	Shipped on dry ice. Upon delivery aliquot and store at -20°C. Avoid freeze / thaw cycles.
バッファー	Constituents: 0.01% Bromophenol blue, 2.3% Beta mercaptoethanol, 2% Sodium lauryl sulfate, 0.788% Tris HCl, 10% Glycerol (glycerin, glycerine)
背景	Function: Inhibits the basal activity of Jun kinase. Negatively regulated by epidermal growth factor (EGF). When overexpressed, may activate ERK1/ERK2 and JNK/SAPK. Tissue specificity: Ubiquitously expressed at a low level, and highly expressed in peripheral blood leukocytes (PBLs), thymus, spleen, kidney, skeletal muscle, heart and liver. Similarity: Belongs to the protein kinase superfamily. STE Ser/Thr protein kinase family. STE20 subfamily. Contains 1 protein kinase domain. PTM: Autophosphorylated. Phosphorylated upon DNA damage, probably by ATM or ATR.

#### アプリケーション

The Abpromise guarantee Abpromise保証は、次のテスト済みアプリケーションにおけるab94147の使用に適用されます  
アプリケーションノートには、推奨の開始希釈率がありますが、適切な希釈率につきましてはご確認ください。

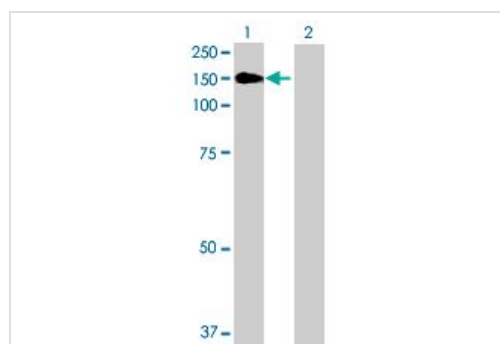
アプリケーション	Abreviews	特記事項
WB		Use at an assay dependent dilution.

## 画像



SDS-PAGE - KDS overexpression 293T lysate  
(whole cell) (ab94147)

ab94147 at 15µg/lane on an SDS-PAGE gel.



Western blot - KDS overexpression 293T lysate  
(whole cell) (ab94147)

**All lanes :** Anti-KDS antibody (**ab57359**) at 1/500 dilution

**Lane 1 :** KDS overexpression 293T lysate (whole cell) (ab94147)

**Lane 2 :** 293T non-transfected lysate

Lysates/proteins at 25 µg per lane.

### Secondary

**All lanes :** Goat Anti-mouse IgG (H and L) HRP conjugated at  
1/2500 dilution

**Please note:** All products are "FOR RESEARCH USE ONLY. NOT FOR USE IN DIAGNOSTIC PROCEDURES"

## Our Abpromise to you: Quality guaranteed and expert technical support

- Replacement or refund for products not performing as stated on the datasheet
- Valid for 12 months from date of delivery
- Response to your inquiry within 24 hours
- We provide support in Chinese, English, French, German, Japanese and Spanish
- Extensive multi-media technical resources to help you
- We investigate all quality concerns to ensure our products perform to the highest standards

If the product does not perform as described on this datasheet, we will offer a refund or replacement. For full details of the Abpromise, please visit <https://www.abcam.co.jp/abpromise> or contact our technical team.

## Terms and conditions

- Guarantee only valid for products bought direct from Abcam or one of our authorized distributors