

# Human STK17A knockout HeLa cell lysate ab258705

画像数 4

### 製品の概要

---

|                      |  |
|----------------------|--|
| 製品名                  | Human STK17A knockout HeLa cell lysate   |
| 製品の概要                | Knockout cell lysate achieved by CRISPR/Cas9.  |
| Parental Cell Line   | HeLa   |
| Organism             | Human  |
| Mutation description | Knockout achieved by using CRISPR/Cas9, 1 bp deletion in exon1 and 1 bp insertion in exon1 and Insertion of the selection cassette in exon1.   |
| Passage number       | <20  |
| Knockout validation  | Sanger Sequencing  |
| Reconstitution notes | To use as WB control, resuspend the lyophilizate in 50 µL of LDS* Sample Buffer to have a final concentration of 2 mg/ml. For reducing conditions, we recommend a final concentration of 0.1 M DTT.<br><i>*Usage of SDS sample buffer is not recommended with these lyophilized lysates.</i> |

### 特記事項

**Lysate preparation:** Our lysates are made using RIPA buffer to which we add a protease inhibitor cocktail and phosphatase inhibitor cocktail (ratio: 300:100:10). *This means that the protein of interest is denatured.* If you require a native form of the protein please use the live cell version - found [here](#). Please refer to our lysis protocol for further details on how our lysates are prepared.

**User storage instructions:** Lyophilizate may be stored at 4°C. After reconstitution, store at -20°C for short-term storage or -80°C for long-term storage.

Access thousands of knockout cell lysates, generated from commonly used cancer cell lines.

**[See here for more information on knockout cell lysates.](#)**

Abcam has not and does not intend to apply for the REACH Authorisation of customers' uses of products that contain European Authorisation list (Annex XIV) substances.

It is the responsibility of our customers to check the necessity of application of REACH Authorisation, and any other relevant authorisations, for their intended uses.

This product is subject to limited use licenses from The Broad Institute, ERS Genomics Limited and Sigma-Aldrich Co. LLC, and is developed with patented technology. For full details of the licenses and patents please refer to our [limited use license](#) and [patent pages](#).

## 製品の特性

### 保存方法

Store at -80°C. Please refer to protocols.

| 内容  | 1 kit     |
|---|-----------|
| ab261322 - Human STK17A knockout HeLa cell lysate | 1 x 100µg |
| ab255929 - Human wild-type HeLa cell lysate       | 1 x 100µg |

### Cell type

epithelial

### Disease

Adenocarcinoma

### Gender

Female

### STR Analysis

Amelogenin X D5S818: 11, 12 D13S317: 12, 13.3 D7S820: 8, 12 D16S539: 9, 10 vWA: 16, 18 TH01: 7 TPOX: 8,12 CSF1PO: 9, 10

## ターゲット情報

### 機能

Acts as a positive regulator of apoptosis. Also acts as a regulator of cellular reactive oxygen species.

### 組織特異性

Highly expressed in placenta. Lower levels in heart, lung, skeletal muscle, kidney and pancreas.

### 配列類似性

Belongs to the protein kinase superfamily. CAMK Ser/Thr protein kinase family. DAP kinase subfamily.

Contains 1 protein kinase domain.

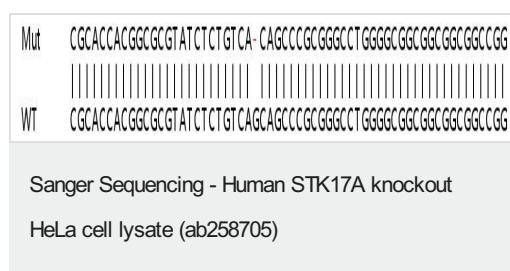
### 翻訳後修飾

Autophosphorylated.

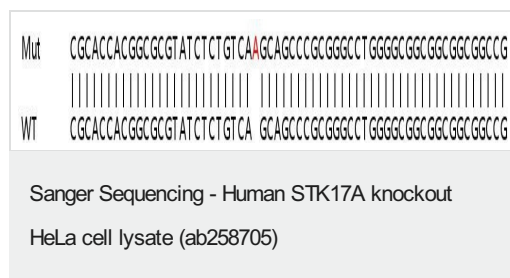
### 細胞内局在

Nucleus.

## 画像



Allele-1: 1 bp deletion in exon1



Allele-2: 1 bp insertion in exon1

|     |  |
|-----|--|
| Mut | CACGGCGCGTATCTCTGTCA****Insertion*****GCAGCCCGCGGGCCTGGGGC |
|     |  |
| WT  | CACGGCGCGTATCTCTGTCA GCAGCCCGCGGGCCTGGGGC                  |

Allele-3: Insertion of the selection cassette in exon1

Sanger Sequencing - Human STK17A knockout  
HeLa cell lysate (ab258705)

|     |  |
|-----|--|
| Mut | CAGCGTATCTCTGTGTGAGCAGC****Insertion*****CCGCGGGCCTGGGGCGGGG |
|     |  |
| WT  | CAGCGTATCTCTGTGTGAGCAGC CCGCGGGCCTGGGGCGGGG                  |

Allele-4: Insertion of the selection cassette in exon1

Sanger Sequencing - Human STK17A knockout  
HeLa cell lysate (ab258705)

**Please note:** All products are "FOR RESEARCH USE ONLY. NOT FOR USE IN DIAGNOSTIC PROCEDURES"

### Our Abpromise to you: Quality guaranteed and expert technical support

- Replacement or refund for products not performing as stated on the datasheet
- Valid for 12 months from date of delivery
- Response to your inquiry within 24 hours
- We provide support in Chinese, English, French, German, Japanese and Spanish
- Extensive multi-media technical resources to help you
- We investigate all quality concerns to ensure our products perform to the highest standards

If the product does not perform as described on this datasheet, we will offer a refund or replacement. For full details of the Abpromise, please visit <https://www.abcam.co.jp/abpromise> or contact our technical team.

### Terms and conditions

- Guarantee only valid for products bought direct from Abcam or one of our authorized distributors