

Human PTBP1 knockout HeLa cell lysate ab257614

画像数 3

製品の概要

| | |
|----------------------|--|
| 製品名 | Human PTBP1 knockout HeLa cell lysate |
| 製品の概要 | Knockout cell lysate achieved by CRISPR/Cas9. |
| Parental Cell Line | HeLa |
| Organism | Human |
| Mutation description | Knockout achieved by using CRISPR/Cas9, 1 bp insertion in exon4. |
| Passage number | <20 |
| Knockout validation | Sanger Sequencing, Western Blot (WB) |
| Reconstitution notes | To use as WB control, resuspend the lyophilizate in 50 µL of LDS* Sample Buffer to have a final concentration of 2 mg/ml. For reducing conditions, we recommend a final concentration of 0.1 M DTT. <i>*Usage of SDS sample buffer is not recommended with these lyophilized lysates.</i> |

特記事項

Lysate preparation: Our lysates are made using RIPA buffer to which we add a protease inhibitor cocktail and phosphatase inhibitor cocktail (ratio: 300:100:10). *This means that the protein of interest is denatured.* If you require a native form of the protein please use the live cell version - found [here](#). Please refer to our lysis protocol for further details on how our lysates are prepared.

User storage instructions: Lyophilizate may be stored at 4°C. After reconstitution, store at -20°C for short-term storage or -80°C for long-term storage.

Access thousands of knockout cell lysates, generated from commonly used cancer cell lines.

[See here for more information on knockout cell lysates.](#)

Abcam has not and does not intend to apply for the REACH Authorisation of customers' uses of products that contain European Authorisation list (Annex XIV) substances.

It is the responsibility of our customers to check the necessity of application of REACH Authorisation, and any other relevant authorisations, for their intended uses.

This product is subject to limited use licenses from The Broad Institute, ERS Genomics Limited and Sigma-Aldrich Co. LLC, and is developed with patented technology. For full details of the licenses and patents please refer to our [limited use license](#) and [patent pages](#).

アプリケーション

適用あり: WB

製品の特性

保存方法

Store at -80°C. Please refer to protocols.

| 内容 | 1 kit |
|--|-----------|
| ab262961 - Human PTBP1 knockout HeLa cell lysate | 1 x 100µg |
| ab255929 - Human wild-type HeLa cell lysate | 1 x 100µg |

Cell type

epithelial

Disease

Adenocarcinoma

Gender

Female

STR Analysis

Amelogenin X D5S818: 11, 12 D13S317: 12, 13.3 D7S820: 8, 12 D16S539: 9, 10 vWA: 16, 18 TH01: 7 TPOX: 8,12 CSF1PO: 9, 10

ターゲット情報

機能

Plays a role in pre-mRNA splicing and in the regulation of alternative splicing events. Binds to the polypyrimidine tract of introns. May promote RNA looping when bound to two separate polypyrimidine tracts in the same pre-mRNA. May promote the binding of U2 snRNP to pre-mRNA. Cooperates with RAVR1 to modulate switching between mutually exclusive exons during maturation of the TPM1 pre-mRNA.

配列類似性

Contains 4 RRM (RNA recognition motif) domains.

細胞内局在

Nucleus.

アプリケーション

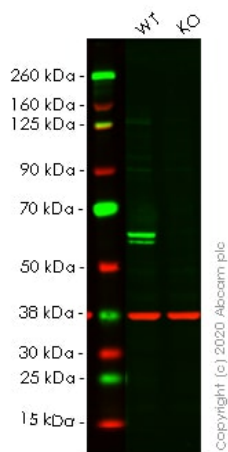
The Abpromise guarantee

Abpromise保証は、次のテスト済みアプリケーションにおけるab257614の使用に適用されず

アプリケーションノートには、推奨の開始希釈率がありますが、適切な希釈率につきましてはご検討ください。

| アプリケーション | Abreviews | 特記事項 |
|----------|-----------|--|
| WB | | Use at an assay dependent concentration. Predicted molecular weight: 57 kDa. |

画像



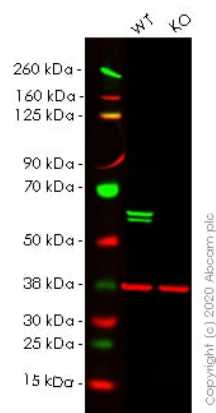
Western blot - Human PTBP1 knockout HeLa cell lysate (ab257614)

Lane 1: Wild-type HeLa cell lysate (20µg)

Lane 2: PTBP1 knockout HeLa cell lysate (20µg)

Lanes 1- 2: Merged signal (red and green). Green - **ab134950** observed at 57 kDa. Red - loading control **ab8245** observed at 37 kDa.

ab134950 Anti-PTBP1 antibody [EPR9049(B)] was shown to specifically react with PTBP1 in wild-type HeLa cells in western blot. Loss of signal was observed when knockout cell line **ab265155** (knockout cell lysate ab257614) was used. Wild-type and PTBP1 knockout samples were subjected to SDS-PAGE. Membrane was blocked for 1 hour at room temperature in 0.1% TBST with 3% non-fat dried milk. **ab134950** and Anti-GAPDH antibody [6C5] - Loading Control (**ab8245**) were incubated overnight at 4 °C at 1 in 1000 dilution and 1 in 20000 dilution respectively. Blots were developed with Goat anti-Rabbit IgG H&L (IRDye® 800CW) preadsorbed (**ab216773**) and Goat anti-Mouse IgG H&L (IRDye® 680RD) preadsorbed (**ab216776**) secondary antibodies at 1 in 20000 dilution for 1 hour at room temperature before imaging.



Western blot - Human PTBP1 knockout HeLa cell lysate (ab257614)

Lane 1: Wild-type HeLa cell lysate (20µg)

Lane 2: PTBP1 knockout HeLa cell lysate (20µg)

Lanes 1- 2: Merged signal (red and green). Green - **ab133734** observed at 57 kDa. Red - loading control **ab8245** observed at 37 kDa.

ab133734 Anti-PTBP1 antibody [EPR9048(B)] was shown to specifically react with PTBP1 in wild-type HeLa cells in western blot. Loss of signal was observed when knockout cell line **ab265155** (knockout cell lysate ab257614) was used. Wild-type and PTBP1 knockout samples were subjected to SDS-PAGE. Membrane was blocked for 1 hour at room temperature in 0.1% TBST with 3% non-fat dried milk. **ab133734** and Anti-GAPDH antibody [6C5] -

Loading Control (**ab8245**) were incubated overnight at 4 °C at 1 in 10000 dilution and 1 in 20000 dilution respectively. Blots were developed with Goat anti-Rabbit IgG H&L (IRDye® 800CW) preadsorbed (**ab216773**) and Goat anti-Mouse IgG H&L (IRDye® 680RD) preadsorbed (**ab216776**) secondary antibodies at 1 in 20000 dilution for 1 hour at room temperature before imaging.

| | |
|-----|--|
| Mut | GGTGACAGCCGAAGTGCAGGCGTCCCCTCATAGAGTGATCCACATCCGGAAGCTCCCCAT |
| | |
| WT | GGTGACAGCCGAAGTGCAGGCGTCCCCTC TAGAGTGATCCACATCCGGAAGCTCCCCAT |

Homozygous: 1 bp insertion in exon4

Sanger Sequencing - Human PTBP1 knockout HeLa cell lysate (ab257614)

Please note: All products are "FOR RESEARCH USE ONLY. NOT FOR USE IN DIAGNOSTIC PROCEDURES"

Our Abpromise to you: Quality guaranteed and expert technical support

- Replacement or refund for products not performing as stated on the datasheet
- Valid for 12 months from date of delivery
- Response to your inquiry within 24 hours
- We provide support in Chinese, English, French, German, Japanese and Spanish
- Extensive multi-media technical resources to help you
- We investigate all quality concerns to ensure our products perform to the highest standards

If the product does not perform as described on this datasheet, we will offer a refund or replacement. For full details of the Abpromise, please visit <https://www.abcam.co.jp/abpromise> or contact our technical team.

Terms and conditions

- Guarantee only valid for products bought direct from Abcam or one of our authorized distributors