

Human IL18 knockout HeLa cell lysate ab256952

画像数 3

製品の概要

製品名	Human IL18 knockout HeLa cell lysate
製品の概要	Knockout cell lysate achieved by CRISPR/Cas9.
Parental Cell Line	HeLa
Organism	Human
Mutation description	Knockout achieved by using CRISPR/Cas9, 1 bp deletion in exon4.
Passage number	<20
Knockout validation	Sanger Sequencing, Western Blot (WB)
Reconstitution notes	To use as WB control, resuspend the lyophilizate in 50 µL of LDS* Sample Buffer to have a final concentration of 2 mg/ml. For reducing conditions, we recommend a final concentration of 0.1 M DTT. <i>*Usage of SDS sample buffer is not recommended with these lyophilized lysates.</i>

特記事項

Lysate preparation: Our lysates are made using RIPA buffer to which we add a protease inhibitor cocktail and phosphatase inhibitor cocktail (ratio: 300:100:10). *This means that the protein of interest is denatured.* If you require a native form of the protein please use the live cell version - found [here](#). Please refer to our lysis protocol for further details on how our lysates are prepared.

User storage instructions: Lyophilizate may be stored at 4°C. After reconstitution, store at -20°C for short-term storage or -80°C for long-term storage.

Access thousands of knockout cell lysates, generated from commonly used cancer cell lines.

[See here for more information on knockout cell lysates.](#)

Abcam has not and does not intend to apply for the REACH Authorisation of customers' uses of products that contain European Authorisation list (Annex XIV) substances.

It is the responsibility of our customers to check the necessity of application of REACH Authorisation, and any other relevant authorisations, for their intended uses.

This product is subject to limited use licenses from The Broad Institute and ERS Genomics Limited, and is developed with patented technology. For full details of the limited use licenses and relevant patents please refer to our [limited use license](#) and [patent pages](#).

アプリケーション

適用あり: WB

製品の特性

保存方法

Store at -80°C. Please refer to protocols.

内容	1 kit
ab260922 - Human IL18 knockout HeLa cell lysate	1 x 100µg
ab255929 - Human wild-type HeLa cell lysate	1 x 100µg

Cell type

epithelial

Disease

Adenocarcinoma

Gender

Female

STR Analysis

Amelogenin X D5S818: 11, 12 D13S317: 12, 13.3 D7S820: 8, 12 D16S539: 9, 10 vWA: 16, 18 TH01: 7 TPOX: 8,12 CSF1PO: 9, 10

ターゲット情報

機能

Augments natural killer cell activity in spleen cells and stimulates interferon gamma production in T-helper type I cells.

配列類似性

Belongs to the IL-1 family.

細胞内局在

Secreted.

アプリケーション

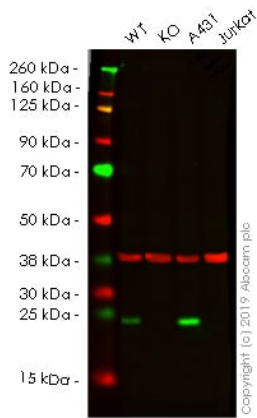
The Abpromise guarantee

Abpromise保証は、次のテスト済みアプリケーションにおけるab256952の使用に適用されます

アプリケーションノートには、推奨の開始希釈率がありますが、適切な希釈率につきましてはご検討ください。

アプリケーション	Abreviews	特記事項
WB		Use at an assay dependent concentration.

画像



Western blot - Human IL18 knockout HeLa cell lysate (ab256952)

Lane 1: Wild-type HeLa cell lysate (20 µg)

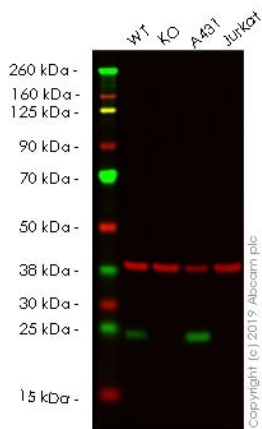
Lane 2: IL18 knockout HeLa cell lysate (20 µg)

Lane 3: A431 cell lysate (20 µg)

Lane 4: Jurkat cell lysate (20 µg)

Lanes 1-4: Merged signal (red and green). Green - **ab243091** observed at 22 kDa. Red - loading control **ab8245** observed at 37 kDa.

ab243091 Anti-IL-18 antibody [EPR19954-188] was shown to specifically react with IL-18 in wild-type HeLa cells. Loss of signal was observed when knockout cell line **ab265274** (knockout cell lysate ab256952) was used. Wild-type and IL-18 knockout samples were subjected to SDS-PAGE. **ab243091** and Anti-alpha Tubulin antibody [EP1332Y] - Microtubule Marker (**ab52866**) were incubated overnight at 4°C at 1 in 1000 dilution and 1 in 20000 dilution respectively. Blots were developed with Goat anti-Rabbit IgG H&L (IRDye® 800CW) preadsorbed (**ab216773**) and Goat anti-Mouse IgG H&L (IRDye® 680RD) preadsorbed (**ab216776**) secondary antibodies at 1 in 20000 dilution for 1 hour at room temperature before imaging.



Western blot - Human IL18 knockout HeLa cell lysate (ab256952)

Lane 1: Wild-type HeLa cell lysate (20 µg)

Lane 2: IL18 knockout HeLa cell lysate (20 µg)

Lane 3: A431 cell lysate (20 µg)

Lane 4: Jurkat cell lysate (20 µg)

Lanes 1-4: Merged signal (red and green). Green - **ab207324** observed at 22 kDa. Red - loading control **ab8245** observed at 37 kDa.

ab207324 Anti-IL-18 antibody [EPR19954] was shown to specifically react with IL-18 in wild-type HeLa cells. Loss of signal was observed when knockout cell line **ab265274** (knockout cell lysate ab256952) was used. Wild-type and IL-18 knockout samples were subjected to SDS-PAGE. **ab207324** and Anti-alpha Tubulin antibody [EP1332Y] - Microtubule Marker (**ab52866**) were incubated overnight at 4°C at 1 in 200 dilution and 1 in 20000 dilution respectively. Blots were developed with Goat anti-Rabbit IgG H&L (IRDye® 800CW) preadsorbed (**ab216773**) and Goat anti-Mouse IgG H&L (IRDye® 680RD) preadsorbed (**ab216776**) secondary antibodies at 1 in 20000 dilution for 1 hour at room temperature before imaging.

```
Mut  AATGACCAAGTTCTCTTCATTGACCAAGGAA-TCGGCCTCTATTGAAGATATGACTGAT
      |||
WT   AATGACCAAGTTCTCTTCATTGACCAAGGAAATCGGCCTCTATTGAAGATATGACTGAT
```

Homozygous: 1 bp deletion in exon4

Sanger Sequencing - Human IL18 knockout HeLa
cell lysate (ab256952)

Please note: All products are "FOR RESEARCH USE ONLY. NOT FOR USE IN DIAGNOSTIC PROCEDURES"

Our Abpromise to you: Quality guaranteed and expert technical support

- Replacement or refund for products not performing as stated on the datasheet
- Valid for 12 months from date of delivery
- Response to your inquiry within 24 hours
- We provide support in Chinese, English, French, German, Japanese and Spanish
- Extensive multi-media technical resources to help you
- We investigate all quality concerns to ensure our products perform to the highest standards

If the product does not perform as described on this datasheet, we will offer a refund or replacement. For full details of the Abpromise, please visit <https://www.abcam.co.jp/abpromise> or contact our technical team.

Terms and conditions

- Guarantee only valid for products bought direct from Abcam or one of our authorized distributors