

# Human GSK3A (GSK3 alpha) knockout HEK-293T cell lysate ab257979

画像数 4

### 製品の概要

製品名	Human GSK3A (GSK3 alpha) knockout HEK-293T cell lysate
製品の概要	Knockout cell lysate achieved by CRISPR/Cas9.
Parental Cell Line	HEK293T
Organism	Human
Mutation description	Knockout achieved by using CRISPR/Cas9, 1 bp deletion in exon1 and Insertion of the selection cassette in exon1.
Passage number	<20
Knockout validation	Sanger Sequencing, Western Blot (WB)
Reconstitution notes	To use as WB control, resuspend the lyophilizate in 50 µL of LDS* Sample Buffer to have a final concentration of 2 mg/ml. For reducing conditions, we recommend a final concentration of 0.1 M DTT. <i>*Usage of SDS sample buffer is not recommended with these lyophilized lysates.</i>

### 特記事項

**Lysate preparation:** Our lysates are made using RIPA buffer to which we add a protease inhibitor cocktail and phosphatase inhibitor cocktail (ratio: 300:100:10). *This means that the protein of interest is denatured.* If you require a native form of the protein please use the live cell version - found [here](#). Please refer to our lysis protocol for further details on how our lysates are prepared.

**User storage instructions:** Lyophilizate may be stored at 4°C. After reconstitution, store at -20°C for short-term storage or -80°C for long-term storage.

Access thousands of knockout cell lysates, generated from commonly used cancer cell lines.  
**[See here for more information on knockout cell lysates.](#)**

Abcam has not and does not intend to apply for the REACH Authorisation of customers' uses of products that contain European Authorisation list (Annex XIV) substances. It is the responsibility of our customers to check the necessity of application of REACH Authorisation, and any other relevant authorisations, for their intended uses.

This product is subject to limited use licenses from The Broad Institute, ERS Genomics Limited and Sigma-Aldrich Co. LLC, and is developed with patented technology. For full details of the licenses and patents please refer to our [limited use license](#) and [patent pages](#).

アプリケーション

適用あり: WB

## 製品の特性

### 保存方法

Store at -80°C. Please refer to protocols.

内容	1 kit
ab260412 - Human GSK3A knockout HEK293T cell lysate	1 x 100µg
ab255553 - Human wild-type HEK293T cell lysate	1 x 100µg

### Cell type

epithelial

### STR Analysis

Amelogenin X D5S818: 8, 9 D13S317: 12, 14 D7S820: 11 D16S539: 9, 13 vWA: 16, 19 TH01: 7, 9.3 TPOX: 11 CSF1PO: 11, 12

## ターゲット情報

### 機能

Implicated in the hormonal control of several regulatory proteins including glycogen synthase, MYB and the transcription factor JUN.

### 配列類似性

Belongs to the protein kinase superfamily. CMGC Ser/Thr protein kinase family. GSK-3 subfamily. Contains 1 protein kinase domain.

## アプリケーション

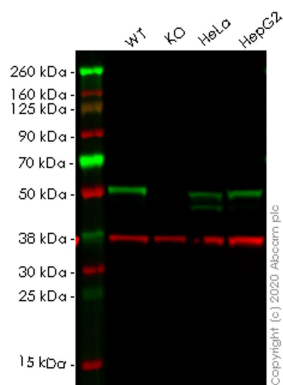
### The Abpromise guarantee

**Abpromise保証は、次のテスト済みアプリケーションにおけるab257979の使用に適用されず**

アプリケーションノートには、推奨の開始希釈率がありますが、適切な希釈率につきましてはご検討ください。

アプリケーション	Abreviews	特記事項
WB		Use at an assay dependent concentration. Predicted molecular weight: 51 kDa.

## 画像



Western blot - Human GSK3A (GSK3 alpha)  
knockout HEK293T cell lysate (ab257979)

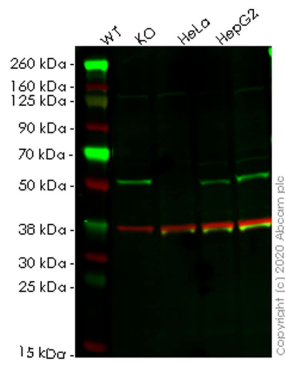
**Lane 1:** Wild-type HEK-293T (Human epithelial cell line from embryonic kidney transformed with large T antigen) whole cell lysate (20 ug)

**Lane 2:** GSK3A knockout HEK-293T (Human epithelial cell line from embryonic kidney transformed with large T antigen) whole cell lysate (20 ug)

**Lane 3:** HeLa (Human epithelial cell line from cervix adenocarcinoma) whole cell lysate (20 ug)

**Lane 4:** HepG2 (Human liver hepatocellular carcinoma cell line) whole cell lysate (20 ug)

**ab40870** was shown to specifically react with GSK3 alpha in wild-type HEK-293T cells. Loss of signal was observed when knockout cell line **ab266742** (knockout cell lysate ab257979) was used. Wild-type and GSK3 alpha knockout samples were subjected to SDS-PAGE. **ab40870** and Anti-GAPDH antibody [6C5] - Loading Control (**ab8245**) were incubated overnight at 4°C at 1 in 1000 dilution and 1 in 20000 dilution respectively. Blots were developed with Goat anti-Rabbit IgG H&L (IRDye® 800CW) preadsorbed (**ab216773**) and Goat anti-Mouse IgG H&L (IRDye® 680RD) preadsorbed (**ab216776**) secondary antibodies at 1 in 20000 dilution for 1 hour at room temperature before imaging.



Western blot - Human GSK3A (GSK3 alpha)  
knockout HEK293T cell lysate (ab257979)

**Lane 1:** Wild-type HEK-293T (Human epithelial cell line from embryonic kidney transformed with large T antigen) whole cell lysate (20 ug)

**Lane 2:** GSK3A knockout HEK-293T (Human epithelial cell line from embryonic kidney transformed with large T antigen) whole cell lysate (20 ug)

**Lane 3:** HeLa (Human epithelial cell line from cervix adenocarcinoma) whole cell lysate (20 ug)

**Lane 4:** HepG2 (Human liver hepatocellular carcinoma cell line) whole cell lysate (20 ug)

**ab78664** was shown to specifically react with GSK3 alpha in wild-type HEK-293T cells. Loss of signal was observed when knockout cell line **ab266742** (knockout cell lysate ab257979) was used. Wild-type and GSK3 alpha knockout samples were subjected to SDS-PAGE. **ab78664** and Anti-GAPDH antibody [6C5] - Loading Control (**ab8245**) were incubated overnight at 4°C at 1 in 1000 dilution and 1 in 20000 dilution respectively. Blots were developed with Goat anti-Rabbit IgG H&L (IRDye® 800CW) preadsorbed (**ab216773**) and Goat anti-Mouse IgG H&L (IRDye® 680RD) preadsorbed (**ab216776**) secondary antibodies at 1 in 20000 dilution for 1 hour at room temperature before imaging.

```
Mut  CAGGGCGCGGACTAGCTCGTTCGCGGAGCC- GGC GGC GGAGGC GGAGGAGGC GGC GGC GG
      |||
WT   CAGGGCGCGGACTAGCTCGTTCGCGGAGCCCGCG GGC GGAGGC GGAGGAGGC GGC GGC GG
```

Sanger Sequencing - Human GSK3A knockout  
HEK293T cell lysate (ab257979)

Allele-1: 1 bp deletion in exon1

```
Mut  ACTAGCTCGTTCGCGGAGCC*****Insertion*****CGCGGC GGAGGC GGAGGAG
      |||
WT   ACTAGCTCGTTCGCGGAGCC                CGCGGC GGAGGC GGAGGAG
```

Sanger Sequencing - Human GSK3A knockout  
HEK293T cell lysate (ab257979)

Allele-2: Insertion of the selection cassette in exon1

**Please note:** All products are "FOR RESEARCH USE ONLY. NOT FOR USE IN DIAGNOSTIC PROCEDURES"

### Our Abpromise to you: Quality guaranteed and expert technical support

- Replacement or refund for products not performing as stated on the datasheet
- Valid for 12 months from date of delivery
- Response to your inquiry within 24 hours

- We provide support in Chinese, English, French, German, Japanese and Spanish
- Extensive multi-media technical resources to help you
- We investigate all quality concerns to ensure our products perform to the highest standards

If the product does not perform as described on this datasheet, we will offer a refund or replacement. For full details of the Abpromise, please visit <https://www.abcam.co.jp/abpromise> or contact our technical team.

### **Terms and conditions**

---

- Guarantee only valid for products bought direct from Abcam or one of our authorized distributors