

Human ATP2B4 (Calcium Pump PMCA4 ATPase) knockout HeLa cell lysate ab258321

画像数 3

製品の概要

製品名	Human ATP2B4 (Calcium Pump PMCA4 ATPase) knockout HeLa cell lysate
製品の概要	Knockout cell lysate achieved by CRISPR/Cas9.
Parental Cell Line	HeLa
Organism	Human
Mutation description	Knockout achieved by using CRISPR/Cas9, 1 bp deletion in exon2 and 1 bp insertion in exon2.
Passage number	<20
Knockout validation	Sanger Sequencing, Western Blot (WB)
Reconstitution notes	To use as WB control, resuspend the lyophilizate in 50 µL of LDS* Sample Buffer to have a final concentration of 2 mg/ml. For reducing conditions, we recommend a final concentration of 0.1 M DTT. <i>*Usage of SDS sample buffer is not recommended with these lyophilized lysates.</i>

特記事項

Lysate preparation: Our lysates are made using RIPA buffer to which we add a protease inhibitor cocktail and phosphatase inhibitor cocktail (ratio: 300:100:10). *This means that the protein of interest is denatured.* If you require a native form of the protein please use the live cell version - found [here](#). Please refer to our lysis protocol for further details on how our lysates are prepared.

User storage instructions: Lyophilizate may be stored at 4°C. After reconstitution, store at -20°C for short-term storage or -80°C for long-term storage.

Access thousands of knockout cell lysates, generated from commonly used cancer cell lines.

[See here for more information on knockout cell lysates.](#)

Abcam has not and does not intend to apply for the REACH Authorisation of customers' uses of products that contain European Authorisation list (Annex XIV) substances.

It is the responsibility of our customers to check the necessity of application of REACH Authorisation, and any other relevant authorisations, for their intended uses.

This product is subject to limited use licenses from The Broad Institute, ERS Genomics Limited and Sigma-Aldrich Co. LLC, and is developed with patented technology. For full details of the licenses and patents please refer to our [limited use license](#) and [patent pages](#).

アプリケーション

適用あり: WB

製品の特性

保存方法 Store at -80°C. Please refer to protocols.

内容	1 kit
ab262375 - Human ATP2B4 knockout HeLa cell lysate	1 x 100µg
ab255929 - Human wild-type HeLa cell lysate	1 x 100µg

Cell type epithelial
Disease Adenocarcinoma
Gender Female
STR Analysis Amelogenin X D5S818: 11, 12 D13S317: 12, 13.3 D7S820: 8, 12 D16S539: 9, 10 WWA: 16, 18 TH01: 7 TPOX: 8,12 CSF1PO: 9, 10

ターゲット情報

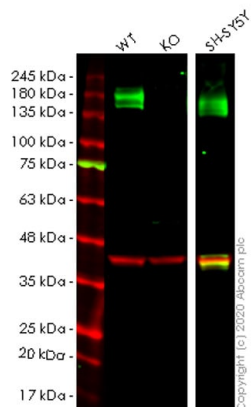
機能 This magnesium-dependent enzyme catalyzes the hydrolysis of ATP coupled with the transport of calcium out of the cell.
組織特異性 Isoform XB is the most abundant isoform and is expressed ubiquitously. Isoforms containing segment Z have only been detected in heart, while isoforms containing segment a have been found in heart, stomach and brain cortex.
配列類似性 Belongs to the cation transport ATPase (P-type) (TC 3.A.3) family. Type IIb subfamily.
細胞内局在 Cell membrane.

アプリケーション

The Abpromise guarantee **Abpromise保証は、次のテスト済みアプリケーションにおけるab258321の使用に適用されず**
アプリケーションノートには、推奨の開始希釈率がありますが、適切な希釈率につきましてはご検討ください。

アプリケーション	Abreviews	特記事項
WB		Use at an assay dependent concentration. Predicted molecular weight: 138 kDa.

画像



Western blot - Human ATP2B4 knockout HeLa cell lysate (ab258321)

Lane 1: Wild-type HeLa cell lysate (20 µg)

Lane 2: ATP2B4 knockout HeLa cell lysate (20 µg)

Lane 3: SH-SY5Y cell lysate (20 µg)

Lanes 1-3: Merged signal (red and green). Green - **ab2783** observed at 140 kDa. Red - loading control, **ab181602** observed at 37 kDa.

ab2783 Anti-Calcium Pump PMCA4 ATPase antibody [JA9] was shown to specifically react with Calcium Pump PMCA4 ATPase in wild-type HeLa cells. Loss of signal was observed when knockout cell line **ab264720** (knockout cell lysate ab258321) was used. Wild-type and Calcium Pump PMCA4 ATPase knockout samples were subjected to SDS-PAGE. **ab2783** and Anti-GAPDH antibody [EPR16891] - Loading Control (**ab181602**) were incubated overnight at 4°C at 1 in 500 dilution and 1 in 20000 dilution respectively. Blots were developed with Goat anti-Mouse IgG H&L (IRDye® 800CW) preadsorbed (**ab216772**) and Goat anti-Rabbit IgG H&L (IRDye® 680RD) preadsorbed (**ab216777**) secondary antibodies at 1 in 10000 dilution for 1 hour at room temperature before imaging.

```

Mut  CTCTGCAGTAGACTGAAAACCTCCCCTGTG- AAGGTAAGGCCATATCAGGGGTGGGGAG
      |||
WT   CTCTGCAGTAGACTGAAAACCTCCCCTGTGGAAGGTAAGGCCATATCAGGGGTGGGGAG
  
```

Sanger Sequencing - Human ATP2B4 knockout HeLa cell lysate (ab258321)

Allele-1: 1 bp deletion in exon2

```

Mut  CTCTGCAGTAGACTGAAAACCTCCCCTGTGGAAGGTAAGGCCATATCAGGGGTGGGGAG
      |||
WT   CTCTGCAGTAGACTGAAAACCTCCCCTGTG GAAGGTAAGGCCATATCAGGGGTGGGGAG
  
```

Sanger Sequencing - Human ATP2B4 knockout HeLa cell lysate (ab258321)

Allele-2: 1 bp insertion in exon2

Please note: All products are "FOR RESEARCH USE ONLY. NOT FOR USE IN DIAGNOSTIC PROCEDURES"

Our Abpromise to you: Quality guaranteed and expert technical support

- Replacement or refund for products not performing as stated on the datasheet
- Valid for 12 months from date of delivery
- Response to your inquiry within 24 hours

- We provide support in Chinese, English, French, German, Japanese and Spanish
- Extensive multi-media technical resources to help you
- We investigate all quality concerns to ensure our products perform to the highest standards

If the product does not perform as described on this datasheet, we will offer a refund or replacement. For full details of the Abpromise, please visit <https://www.abcam.co.jp/abpromise> or contact our technical team.

Terms and conditions

- Guarantee only valid for products bought direct from Abcam or one of our authorized distributors