

CHN 1 overexpression 293T lysate (whole cell) ab94168

画像数 2

医薬用外劇物

製品の概要

製品名	CHN 1 overexpression 293T lysate (whole cell)
特記事項	ab94168 is a 293T cell transfected lysate in which Human CHN 1 has been transiently over-expressed using a pCMV-CHN 1 plasmid. The lysate is provided in 1X Sample Buffer.
アプリケーション	適用あり: WB

製品の特性

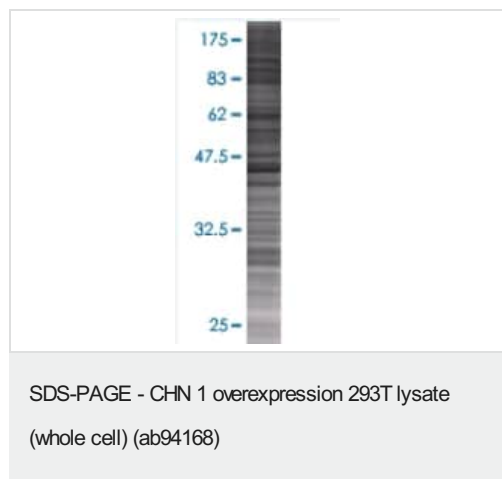
Mycoplasma free	Yes
製品の状態	Liquid
保存方法	Shipped on dry ice. Upon delivery aliquot and store at -20°C. Avoid freeze / thaw cycles.
バッファー	Constituents: 0.01% Bromophenol blue, 2.3% Beta mercaptoethanol, 2% Sodium lauryl sulfate, 0.788% Tris HCl, 10% Glycerol (glycerin, glycerine)
背景	Function: GTPase-activating protein for p21-rac and a phorbol ester receptor. May play an important role in neuronal signal-transduction mechanisms. Tissue specificity: In neurons in brain regions that are involved in learning and memory processes. Disease: Defects in CHN1 are the cause of Duane retraction syndrome type 2 (DURS2) [MIM:604356]. Duane retraction syndrome is a congenital eye movement disorder characterized by a failure of cranial nerve VI (the abducens nerve) to develop normally, resulting in restriction or absence of abduction, adduction, or both, and narrowing of the palpebral fissure and retraction of the globe on attempted adduction. Undiagnosed in children, it can lead to amblyopia, a permanent uncorrectable loss of vision. Similarity: Contains 1 phorbol-ester/DAG-type zinc finger. Contains 1 Rho-GAP domain. Contains 1 SH2 domain. Developmental stage: Increases in amount during brain development coincident with synaptogenesis.

アプリケーション

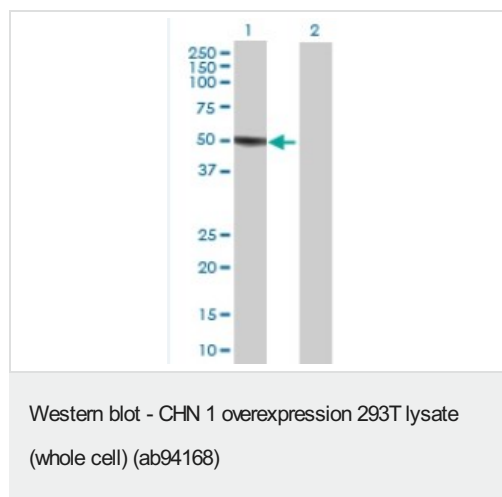
The Abpromise guarantee **Abpromise保証は、** 次のテスト済みアプリケーションにおけるab94168の使用に適用されます
アプリケーションノートには、推奨の開始希釈率がありますが、適切な希釈率につきましてはご検討ください。

アプリケーション	Abreviews	特記事項
WB		Use at an assay dependent dilution.

画像



ab94168 at 15µg/lane on an SDS-PAGE gel.



All lanes : Anti-CHN 1 antibody (**ab54610**) at 1/500 dilution

Lane 1 : CHN 1 293T Transfected Lysate - Positive Control
(ab94168)

Lane 2 : 293T non-transfected lysate

Lysates/proteins at 25 µg per lane.

Secondary

All lanes : Goat Anti-mouse IgG (H and L) HRP conjugate at
1/2500 dilution

Please note: All products are "FOR RESEARCH USE ONLY. NOT FOR USE IN DIAGNOSTIC PROCEDURES"

Our Abpromise to you: Quality guaranteed and expert technical support

- Replacement or refund for products not performing as stated on the datasheet
- Valid for 12 months from date of delivery
- Response to your inquiry within 24 hours
- We provide support in Chinese, English, French, German, Japanese and Spanish
- Extensive multi-media technical resources to help you
- We investigate all quality concerns to ensure our products perform to the highest standards

If the product does not perform as described on this datasheet, we will offer a refund or replacement. For full details of the Abpromise, please visit <https://www.abcam.co.jp/abpromise> or contact our technical team.

Terms and conditions

- Guarantee only valid for products bought direct from Abcam or one of our authorized distributors