

### CD43 overexpression 293T lysate (whole cell) ab94089

画像数 2

医薬用外劇物

#### 製品の概要

製品名	CD43 overexpression 293T lysate (whole cell)
特記事項	ab94089 is a 293T cell transfected lysate in which Human CD43 has been transiently over-expressed using a pCMV-CD43 plasmid. The lysate is provided in 1X Sample Buffer.
アプリケーション	適用あり: WB

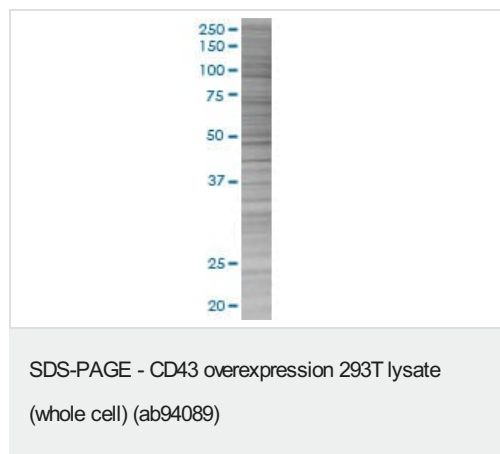
#### 製品の特性

Mycoplasma free	Yes
製品の状態	Liquid
保存方法	Shipped on dry ice. Upon delivery aliquot and store at -20°C. Avoid freeze / thaw cycles.
バッファー	Constituents: 0.01% Bromophenol blue, 2.3% Beta mercaptoethanol, 2% Sodium lauryl sulfate, 0.788% Tris HCl, 10% Glycerol (glycerin, glycerine)
背景	Function: One of the major glycoproteins of thymocytes and T lymphocytes. Plays a role in the physicochemical properties of the T-cell surface and in lectin binding. Presents carbohydrate ligands to selectins. Has an extended rodlike structure that could protrude above the glycocalyx of the cell and allow multiple glycan chains to be accessible for binding. Is a counter receptor for SN/Siglec-1 (By similarity). During T-cell activation is actively removed from the T-cell-APC (antigen-presenting cell) contact site thus suggesting a negative regulatory role in adaptive immune response. Tissue specificity: Cell surface of thymocytes, T-lymphocytes, neutrophils, plasma cells and myelomas. PTM: Glycosylated; has a high content of sialic acid and O-linked carbohydrate structures.

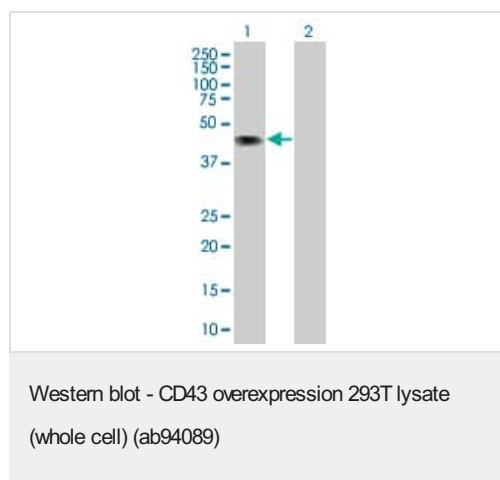
#### アプリケーション

**The Abpromise guarantee**      **Abpromise保証は、次のテスト済みアプリケーションにおけるab94089の使用に適用されます**  
 アプリケーションノートには、推奨の開始希釈率がありますが、適切な希釈率につきましてはご検討ください。

アプリケーション	Abreviews	特記事項
WB		Use at an assay dependent dilution.



ab94089 at 15µg/lane on an SDS-PAGE gel.



**All lanes :** Anti-CD43 antibody (**ab68421**) at 1/500 dilution

**Lane 1 :** CD43 overexpression 293T lysate (whole cell) (ab94089)

**Lane 2 :** 293T non-transfected lysate

Lysates/proteins at 25 µg per lane.

**Secondary**

**All lanes :** Goat Anti-mouse

IgG (H and L) HRP conjugated at 1/2500 dilution

**Please note:** All products are "FOR RESEARCH USE ONLY. NOT FOR USE IN DIAGNOSTIC PROCEDURES"

**Our Abpromise to you: Quality guaranteed and expert technical support**

- Replacement or refund for products not performing as stated on the datasheet
- Valid for 12 months from date of delivery
- Response to your inquiry within 24 hours
- We provide support in Chinese, English, French, German, Japanese and Spanish
- Extensive multi-media technical resources to help you
- We investigate all quality concerns to ensure our products perform to the highest standards

If the product does not perform as described on this datasheet, we will offer a refund or replacement. For full details of the Abpromise, please visit <https://www.abcam.co.jp/abpromise> or contact our technical team.

**Terms and conditions**

- Guarantee only valid for products bought direct from Abcam or one of our authorized distributors