

C1 Inactivator overexpression 293T lysate (whole cell) ab94134

画像数 2

医薬用外劇物

製品の概要

製品名	C1 Inactivator overexpression 293T lysate (whole cell)
特記事項	ab94134 is a 293T cell transfected lysate in which Human C1 Inactivator has been transiently over-expressed using a pCMV-C1 Inactivator plasmid. The lysate is provided in 1X Sample Buffer.
アプリケーション	適用あり: WB

製品の特性

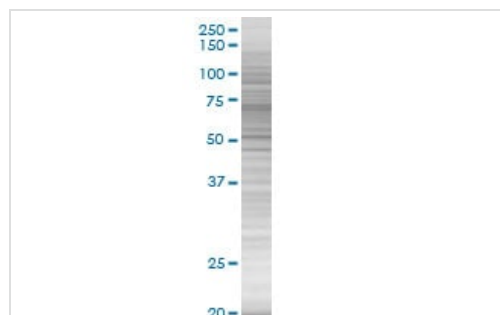
Mycoplasma free	Yes
製品の状態	Liquid
保存方法	Shipped on dry ice. Upon delivery aliquot and store at -20°C. Avoid freeze / thaw cycles.
バッファー	Constituents: 0.01% Bromophenol blue, 2.3% Beta mercaptoethanol, 2% Sodium lauryl sulfate, 0.788% Tris HCl, 10% Glycerol (glycerin, glycerine)
背景	Function: Activation of the C1 complex is under control of the C1-inhibitor. It forms a proteolytically inactive stoichiometric complex with the C1r or C1s proteases. May play a potentially crucial role in regulating important physiological pathways including complement activation, blood coagulation, fibrinolysis and the generation of kinins. Very efficient inhibitor of FXIIa. Inhibits chymotrypsin and kallikrein. Disease: Defects in SERPING1 are the cause of hereditary angioedema (HAE) [MIM:106100]; also called hereditary angioneurotic edema (HANE). HAE is an autosomal dominant disorder characterized by episodic local subcutaneous edema and submucosal edema involving the upper respiratory and gastrointestinal tracts. HAE due to C1 esterase inhibitor deficiency is comprised of two clinically indistinguishable forms. In HAE type 1, representing 85% of patients, serum levels of C1 esterase inhibitor are less than 35% of normal. In HAE type 2, the levels are normal or elevated, but the protein is non-functional. Similarity: Belongs to the serpin family. PTM: Highly glycosylated (49%) with N- and O-glycosylation. Can be proteolytically cleaved by E.coli stcE.

アプリケーション

The Abpromise guarantee Abpromise保証は、 次のテスト済みアプリケーションにおけるab94134の使用に適用されます
 アプリケーションノートには、推奨の開始希釈率がありますが、適切な希釈率につきましてはご検討ください。

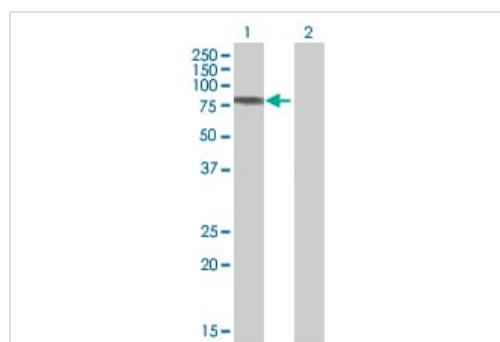
アプリケーション	Abreviews	特記事項
WB		Use at an assay dependent dilution.

画像



SDS-PAGE - C1 Inactivator overexpression 293T lysate (whole cell) (ab94134)

ab94134 at 15µg/lane on an SDS-PAGE gel.



Western blot - C1 Inactivator overexpression 293T lysate (whole cell) (ab94134)

All lanes : Anti-C1 Inactivator antibody ([ab54898](#)) at 1/500 dilution

Lane 1 : C1 Inactivator overexpression 293T lysate (whole cell) (ab94134)

Lane 2 : 293T non-transfected lysate

Lysates/proteins at 25 µg per lane.

Secondary

All lanes : Goat Anti-mouse IgG (H and L) HRP conjugated at 1/2500 dilution

Please note: All products are "FOR RESEARCH USE ONLY. NOT FOR USE IN DIAGNOSTIC PROCEDURES"

Our Abpromise to you: Quality guaranteed and expert technical support

- Replacement or refund for products not performing as stated on the datasheet
- Valid for 12 months from date of delivery
- Response to your inquiry within 24 hours
- We provide support in Chinese, English, French, German, Japanese and Spanish
- Extensive multi-media technical resources to help you
- We investigate all quality concerns to ensure our products perform to the highest standards

If the product does not perform as described on this datasheet, we will offer a refund or replacement. For full details of the Abpromise, please visit <https://www.abcam.co.jp/abpromise> or contact our technical team.

Terms and conditions

- Guarantee only valid for products bought direct from Abcam or one of our authorized distributors