

Bub1 overexpression 293T lysate (whole cell) ab94115

画像数 2

医薬用外劇物

製品の概要

製品名	Bub1 overexpression 293T lysate (whole cell)
特記事項	ab94115 is a 293T cell transfected lysate in which Human Bub1 has been transiently over-expressed using a pCMV-Bub1 plasmid. The lysate is provided in 1X Sample Buffer.
アプリケーション	適用あり: WB

製品の特性

Mycoplasma free	Yes
製品の状態	Liquid
保存方法	Shipped on dry ice. Upon delivery aliquot and store at -20°C. Avoid freeze / thaw cycles.
バッファー	Constituents: 10% Glycerol (glycerin, glycerine), 0.788% Tris HCl, 2% Sodium lauryl sulfate, 2.3% Beta mercaptoethanol, 0.01% Bromophenol blue
背景	<p>Function: Serine/threonine-protein kinase that performs 2 crucial functions during mitosis: it is essential for spindle-assembly checkpoint signaling and for correct chromosome alignment. Has a key role in the assembly of checkpoint proteins at the kinetochore, being required for the subsequent localization of CENPF, BUB1B, CENPE and MAD2L1. Required for the kinetochore localization of PLK1. Plays an important role in defining SGOL1 localization and thereby affects sister chromatid cohesion. Acts as a substrate for anaphase-promoting complex or cyclosome (APC/C) in complex with its activator CDH1 (APC/C-Cdh1). Necessary for ensuring proper chromosome segregation and binding to BUB3 is essential for this function. Can regulate chromosome segregation in a kinetochore-independent manner. Can phosphorylate BUB3. The BUB1-BUB3 complex plays a role in the inhibition of APC/C when spindle-assembly checkpoint is activated and inhibits the ubiquitin ligase activity of APC/C by phosphorylating its activator CDC20. This complex can also phosphorylate MAD1L1. Kinase activity is essential for inhibition of APC/CCDC20 and for chromosome alignment but does not play a major role in the spindle-assembly checkpoint activity. Mediates cell death in response to chromosome missegregation and acts to suppress spontaneous tumorigenesis. Tissue specificity: High expression in testis and thymus, less in colon, spleen, lung and small intestine. Expressed in fetal thymus, bone marrow, heart, liver, spleen and thymus. Expression is associated with cells/tissues with a high mitotic index. Similarity: Belongs to the protein kinase superfamily. Ser/Thr protein kinase family. BUB1 subfamily. Contains 1 BUB1 N-terminal domain. Contains 1 protein kinase domain. Domain: The KEN box is required for its ubiquitination and degradation. BUB1 N-terminal domain</p>

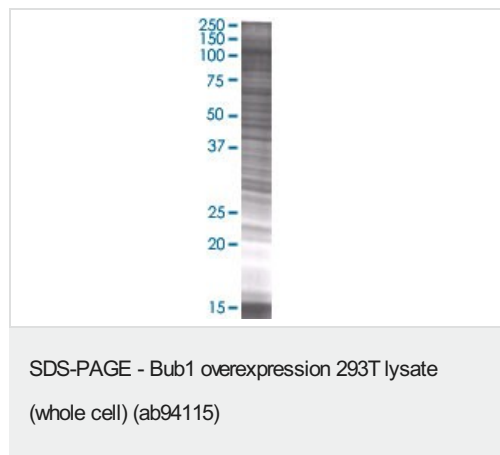
directs kinetochore localization and binding to BUB3. PTM: Phosphorylated upon DNA damage, probably by ATM or ATR. Upon spindle-assembly checkpoint activation it is hyperphosphorylated and its kinase activity toward CDC20 is stimulated. Phosphorylation at Thr-609 is required for interaction with PLK1, phosphorylation at this site probably creates a binding site for the POLO-box domain of PLK1, thus enhancing the PLK1-BUB1 interaction. Ubiquitinated and degraded during mitotic exit by APC/C-Cdh1.

アプリケーション

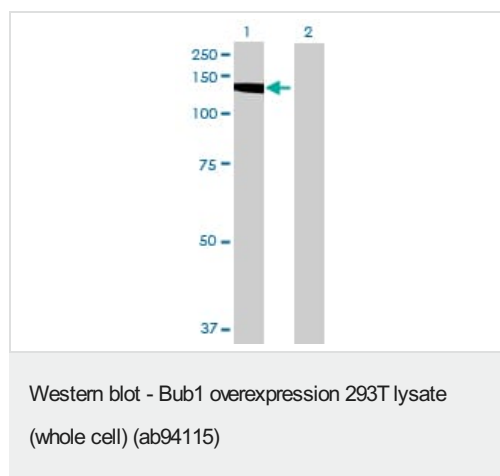
The Abpromise guarantee Abpromise保証は、次のテスト済みアプリケーションにおけるab94115の使用に適用されます
アプリケーションノートには、推奨の開始希釈率がありますが、適切な希釈率につきましてはご検討ください。

アプリケーション	Abreviews	特記事項
WB		Use at an assay dependent dilution.

画像



ab94115 at 15µg/lane on an SDS-PAGE gel.



All lanes : Anti-Bub1 antibody [2F9] ([ab54893](#)) at 1/500 dilution

Lane 1 : Bub1 overexpression 293T lysate (whole cell) (ab94115)

Lane 2 : 293T Non Transfected Lysate

Lysates/proteins at 25 µg per lane.

Secondary

All lanes : Goat Anti-mouse IgG (H and L) HRP conjugated at 1/2500 dilution

Please note: All products are "FOR RESEARCH USE ONLY. NOT FOR USE IN DIAGNOSTIC PROCEDURES"

Our Abpromise to you: Quality guaranteed and expert technical support

-
- Replacement or refund for products not performing as stated on the datasheet
 - Valid for 12 months from date of delivery
 - Response to your inquiry within 24 hours

 - We provide support in Chinese, English, French, German, Japanese and Spanish
 - Extensive multi-media technical resources to help you
 - We investigate all quality concerns to ensure our products perform to the highest standards

If the product does not perform as described on this datasheet, we will offer a refund or replacement. For full details of the Abpromise, please visit <https://www.abcam.co.jp/abpromise> or contact our technical team.

Terms and conditions

- Guarantee only valid for products bought direct from Abcam or one of our authorized distributors