

Pepsin Solution (Antigen Retrieval) ab64201

画像数 1

医薬用外毒物

製品の概要

製品名	Pepsin Solution (Antigen Retrieval)
アプリケーション	適用あり: IHC-P
特記事項	<p>Pepsin for protease-induced antigen retrieval (PIER) during IHC procedures (ab64201). Ready-to-use formulation. Tris buffer pH 2.0</p> <p>Staining Protocol:</p> <p>Incubate tissue section for 10 minutes at 37°C.</p> <p>Rinse and proceed with immunostaining.</p> <p>Pepsin is a commonly used digestive enzyme for immunohistochemical procedures.</p> <p>Other products for IHC</p> <p>Other enzymes for antigen retrieval include: <u>Proteinase K Antigen Retrieval Solution ab64220</u> and <u>Trypsin Antigen Retrieval Kit ab259256</u>.</p> <p>Find more kits and reagents for antigen retrieval, blocking, signal amplification, visualization, counterstaining, and mounting in the <u>IHC kits and reagents guide</u>.</p>

製品の特性

製品の状態	Liquid
保存方法	Store at +4°C.
バッファー	<p>pH: 1.90</p> <p>Preservative: 0.5% Sodium azide</p> <p>Constituents: 0.25% Pepsin, 0.22% Polyoxyethylene lauryl ether, 1.5% Hydrochloric acid</p>
IHC 試薬 備考	Pepsin is a commonly used digestive enzyme for immunohistochemical procedures.
機能	Shows particularly broad specificity; although bonds involving phenylalanine and leucine are preferred, many others are also cleaved to some extent.
配列類似性	Belongs to the peptidase A1 family.
細胞内局在	Secreted.
細胞内局在	Secreted.

アプリケーション

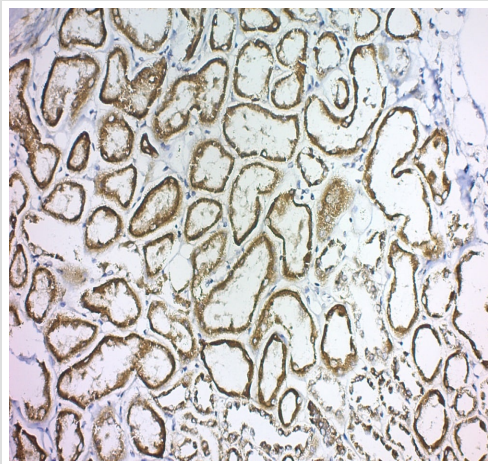
The Abpromise guarantee

Abpromise保証は、次のテスト済みアプリケーションにおけるab64201の使用に適用されます

アプリケーションノートには、推奨の開始希釈率がありますが、適切な希釈率につきましてはご確認ください。

アプリケーション	Abreviews	特記事項
IHC-P		Use at an assay dependent concentration.

画像



ab64201 Pepsin Solution used with Laminin on Human Kidney

Immunohistochemistry (Formalin/PFA-fixed paraffin-embedded sections) - Pepsin Solution (ab64201)

Please note: All products are "FOR RESEARCH USE ONLY. NOT FOR USE IN DIAGNOSTIC PROCEDURES"

Our Abpromise to you: Quality guaranteed and expert technical support

- Replacement or refund for products not performing as stated on the datasheet
- Valid for 12 months from date of delivery
- Response to your inquiry within 24 hours
- We provide support in Chinese, English, French, German, Japanese and Spanish
- Extensive multi-media technical resources to help you
- We investigate all quality concerns to ensure our products perform to the highest standards

If the product does not perform as described on this datasheet, we will offer a refund or replacement. For full details of the Abpromise, please visit <https://www.abcam.co.jp/abpromise> or contact our technical team.

Terms and conditions

- Guarantee only valid for products bought direct from Abcam or one of our authorized distributors