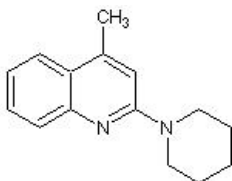


ML 204, TRPC4 blocker ab269883

画像数 1

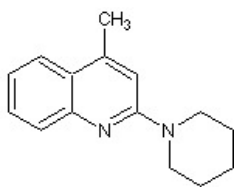
製品の概要

製品名	ML 204, TRPC4 blocker
製品の詳細	Selective TRPC4 channel blocker
生理活性の詳細	Selective TRPC4 channel blocker (IC_{50} = 0.96 (fluorescence assay) - 2.6 μ M (electrophysiological assay)). Selective versus TRPC6 (19-fold) and TRPC5 (9-fold). Essentially inactive at TRPV1, TRPV3, TRPA1 and TRPM8 channels at concentrations up to 22 μ M.
CAS 番号	5465-86-1
構造式	

製品の特性

体系名	4-Methyl-2-(1-piperidinyl)quinoline
分子量	226.32
分子式	$C_{15}H_{18}N_2$
PubChem 登録番号	230710
保存方法	Shipped at Room Temperature. Store at -20°C. Store under desiccating conditions.
溶解性	Soluble in DMSO to 75 mM
使用に関する注意	Refer to SDS for further information. Need more advice on solubility, usage and handling? Please visit our frequently asked questions (FAQ) page for more details.
SMILES 線形表記	<chem>CC1=CC(=NC2=CC=CC=C12)N3CCCCC3</chem>
由来	Synthetic

画像



Chemical structure of ML 204, TRPC4 blocker, 5465-86-1

Chemical Structure - ML 204, TRPC4 blocker
(ab269883)

Please note: All products are "FOR RESEARCH USE ONLY. NOT FOR USE IN DIAGNOSTIC PROCEDURES, NOT FOR USE IN HUMANS"

Our Abpromise to you: Quality guaranteed and expert technical support

- Replacement or refund for products not performing as stated on the datasheet
- Valid for 12 months from date of delivery
- Response to your inquiry within 24 hours
- We provide support in Chinese, English, French, German, Japanese and Spanish
- Extensive multi-media technical resources to help you
- We investigate all quality concerns to ensure our products perform to the highest standards

If the product does not perform as described on this datasheet, we will offer a refund or replacement. For full details of the Abpromise, please visit <https://www.abcam.co.jp/abpromise> or contact our technical team.

Terms and conditions

- Guarantee only valid for products bought direct from Abcam or one of our authorized distributors
- Abcam biochemicals are novel compounds and we have not tested their biological activity in house. Please use the literature to identify how to use these products effectively. If you require further assistance please contact the scientific support team