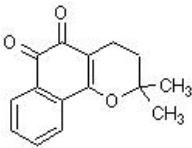


### beta-Lapachone, Topoisomerase I inhibitor ab141097

4 References 画像数 2

#### 製品の概要

製品名	beta-Lapachone, Topoisomerase I inhibitor
製品の詳細	Topoisomerase I inhibitor
生理活性の詳細	Topoisomerase I inhibitor. Inhibits topoisomerase I induced DNA cleavage. Induces apoptosis via a p53 independent mechanism. Shows antitumor, antiviral, antibacterial, antifungal and wound healing activities.
精製度	> 98%
CAS 番号	4707-32-8
構造式	

#### 製品の特性

体系名	3,4-Dihydro-2,2-dimethyl-2 <i>H</i> -naphtho[1,2- <i>b</i> ]pyran-5,6-dione
分子量	242.27
分子式	C <sub>15</sub> H <sub>14</sub> O <sub>3</sub>
PubChem 登録番号	497540
保存方法	Store at +4°C. The product can be stored for up to 12 months.
溶解性	Soluble in ethanol to 50 mM and in DMSO to 100 mM
使用に関する注意	<p>Wherever possible, you should prepare and use solutions on the same day. However, if you need to make up stock solutions in advance, we recommend that you store the solution as aliquots in tightly sealed vials at -20°C. Generally, these will be useable for up to one month. Before use, and prior to opening the vial we recommend that you allow your product to equilibrate to room temperature for at least 1 hour.</p> <p>Need more advice on solubility, usage and handling? Please visit our <a href="#">frequently asked questions (FAQ) page</a> for more details.</p>
SMILES 線形表記	O=C3C(=O)c1ccccc1C2OC(C)(C)CCC23
由来	Synthetic

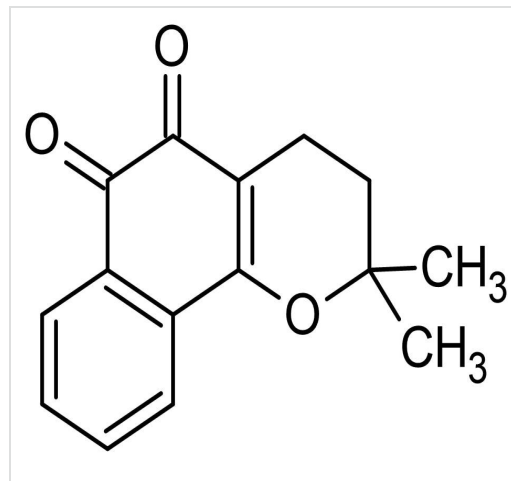
## The Abpromise guarantee

**Abpromise保証は、**次のテスト済みアプリケーションにおけるab141097の使用に適用されます

アプリケーションノートには、推奨の開始希釈率がありますが、適切な希釈率につきましてはご検討ください。

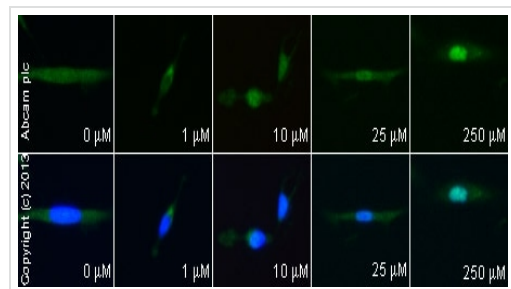
アプリケーション	Abreviews	特記事項
Functional Studies		Use at an assay dependent concentration.

## 画像



Chemical Structure - beta-Lapachone,  
Topoisomerase I inhibitor (ab141097)

2D chemical structure of ab141097, beta-Lapachone,  
Topoisomerase I inhibitor



Functional Studies - beta-Lapachone,  
Topoisomerase I inhibitor (ab141097)

**ab18209** staining p21 in serum starved PC-3 cells treated with  $\beta$ -lapachone (ab141097), by ICC/IF. Increase of p21 nuclear expression correlates with increased concentration of  $\beta$ -lapachone, as described in literature.

The cells were incubated at 37°C for 6 hours in media containing different concentrations of ab141097 ( $\beta$ -lapachone) in DMSO, fixed with 100% methanol for 5 minutes at -20°C and blocked with PBS containing 10% goat serum, 0.3 M glycine, 1% BSA and 0.1% tween for 2h at room temperature. Staining of the treated cells with **ab18209** (5  $\mu$ g/ml) was performed overnight at 4°C in PBS containing 1% BSA and 0.1% tween. A DyLight 488 anti-rabbit polyclonal antibody (**ab96899**) at 1/250 dilution was used as the secondary antibody. Nuclei were counterstained with DAPI and are shown in blue.

**Please note:** All products are "FOR RESEARCH USE ONLY. NOT FOR USE IN DIAGNOSTIC PROCEDURES, NOT FOR USE IN HUMANS"

### **Our Abpromise to you: Quality guaranteed and expert technical support**

---

- Replacement or refund for products not performing as stated on the datasheet
- Valid for 12 months from date of delivery
- Response to your inquiry within 24 hours
  
- We provide support in Chinese, English, French, German, Japanese and Spanish
- Extensive multi-media technical resources to help you
- We investigate all quality concerns to ensure our products perform to the highest standards

If the product does not perform as described on this datasheet, we will offer a refund or replacement. For full details of the Abpromise, please visit <https://www.abcam.co.jp/abpromise> or contact our technical team.

### **Terms and conditions**

---

- Guarantee only valid for products bought direct from Abcam or one of our authorized distributors
- Abcam biochemicals are novel compounds and we have not tested their biological activity in house. Please use the literature to identify how to use these products effectively. If you require further assistance please contact the scientific support team