

# Rac2 Activation Assay Kit ab211162

画像数 2

### 製品の概要

製品名	Rac2 Activation Assay Kit
サンプルの種類	Tissue, Adherent cells, Suspension cells
種交差性	交差種: Mouse, Human
製品の概要	Rac2 Activation Assay Kit (ab211162) uses PAK1 PBD Agarose beads to selectively isolate and pull-down the active form of Rac from purified samples or endogenous lysates. Subsequently, the precipitated GTP-Rac is detected by western blot analysis using an anti-Rac2 specific polyclonal antibody, which reacts with the human and mouse protein.

Features: 1) non radioactive assay format; 2) fast results: 1 hour assay plus electrophoresis/blotting time; 3) includes Cdc42 positive control; 4) pink colored agarose beads for easy identification during washing and aspiration steps.

### 特記事項

Small GTP-binding proteins (or GTPases) are a family of proteins that serve as molecular regulators in signaling transduction pathways.

Rac2 (Ras-Related C3 Botulinum Toxin Substrate 2), a 21 kDa protein, belongs to the family of Rho GTPases and regulates a variety of biological response pathways that include secretory processes, phagocytosis of apoptotic cells and epithelial cell polarization. Like other small GTPases, Rac2 regulates molecular events by cycling between an inactive GDP-bound form and an active GTP-bound form. In its active (GTP-bound) state, Rac2 binds specifically to the p21-binding domain (PBD) of p21-activated protein kinase (PAK) to control downstream signaling cascades.

Diseases associated with Rac2 include neutrophil immunodeficiency syndrome and chronic granulomatous disease.

Abcam has not and does not intend to apply for the REACH Authorisation of customers' uses of products that contain European Authorisation list (Annex XIV) substances.

It is the responsibility of our customers to check the necessity of application of REACH Authorisation, and any other relevant authorisations, for their intended uses.

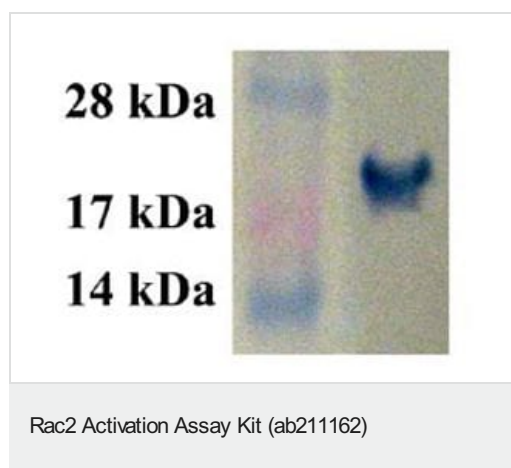
### 製品の特性

保存方法	Store at -20°C. Please refer to protocols.
------	--

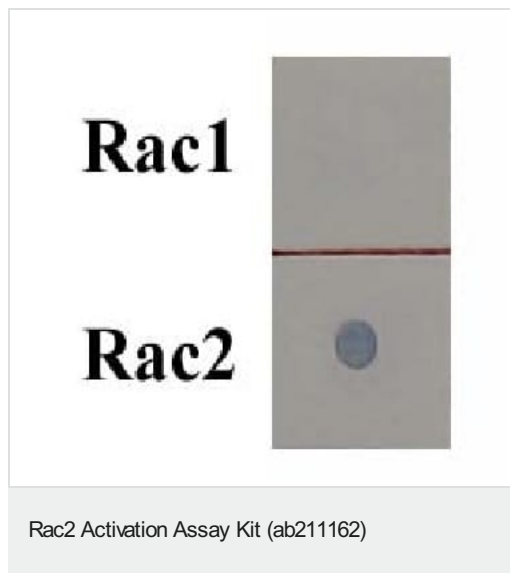
内容	20 tests
ab211177 - PAK1 PBD Agarose Beads	1 x 800µl
100X GTPyS	1 x 50µl
100X GDP	1 x 50µl
5X Assay/Lysis Buffer	1 x 30ml
Anti-rac2 Rabbit polyclonal antibody	1 x 40µl
Rac2 immunoblot Positive Control	1 x 100µl

機能	Plasma membrane-associated small GTPase which cycles between an active GTP-bound and inactive GDP-bound state. In active state binds to a variety of effector proteins to regulate cellular responses, such as secretory processes, phagocytosis of apoptotic cells and epithelial cell polarization. Augments the production of reactive oxygen species (ROS) by NADPH oxidase.
組織特異性	Hematopoietic specific.
関連疾患	Defects in RAC2 are the cause of neutrophil immunodeficiency syndrome (NEUID) [MIM:608203].
配列類似性	Belongs to the small GTPase superfamily. Rho family.
細胞内局在	Cytoplasm. Membrane-associated when activated.

## 画像



Rac2 positive control (recombinant human Rac2 from *E. coli*, partially purified) detected by immunoblot.



Dot blot that demonstrates specificity of anti-Rac2 rabbit antibody.

**Please note:** All products are "FOR RESEARCH USE ONLY. NOT FOR USE IN DIAGNOSTIC PROCEDURES"

#### **Our Abpromise to you: Quality guaranteed and expert technical support**

---

- Replacement or refund for products not performing as stated on the datasheet
- Valid for 12 months from date of delivery
- Response to your inquiry within 24 hours
- We provide support in Chinese, English, French, German, Japanese and Spanish
- Extensive multi-media technical resources to help you
- We investigate all quality concerns to ensure our products perform to the highest standards

If the product does not perform as described on this datasheet, we will offer a refund or replacement. For full details of the Abpromise, please visit <https://www.abcam.co.jp/abpromise> or contact our technical team.

#### **Terms and conditions**

---

- Guarantee only valid for products bought direct from Abcam or one of our authorized distributors