

Phosphate Assay Kit - PiColorLock™ ab270004

画像数 3

医薬用外劇物

製品の概要

製品名 Phosphate Assay Kit - PiColorLock™

製品の概要 Phosphate Assay Kit - PiColorLock™ (ab270004) changes colour in the presence of inorganic phosphate (Pi). This can be exploited to measure any enzyme that generates Pi including ATPases, GTPases, Phosphatases, heat shock proteins and DNA unwinding proteins.

The unique formulation of Phosphate Assay Kit - PiColorLock™ (ab270004) affords enhanced assay linearity, dynamic range and colour stability; it is also possible to work with unstable substrates (e.g. ATP, GTP) that give high nonenzymatic background signals with other acidic dye-based detection reagents.

Key benefits:

Colorimetric assay – Simple, scalable and nonradioactive

Compatible with almost any assay buffer – Flexibility over a wide range of existing assays

Stable reagent formulation – Long shelf life

Unique accelerator – Speeds up color development

Unique stabilizer – Suppresses nonenzymatic backgrounds with acid labile substrates (ATP or GTP)

PiColorLock™-Pi complex is very stable – No precipitation, results can be measured over several hours; ideal for HTS

Wide linear range – No inhibition of color development by high concentrations of protein

The unique PiColorLock™ Stabilizer prevents background drift with time.

General Notes

This product is manufactured by Expedeon, an Abcam company. It was previously called PiColorLock. Expedeon product code 303-0030 is the same as the 600 test size of this product and code 303-0125 is the same as the 2500 test size.

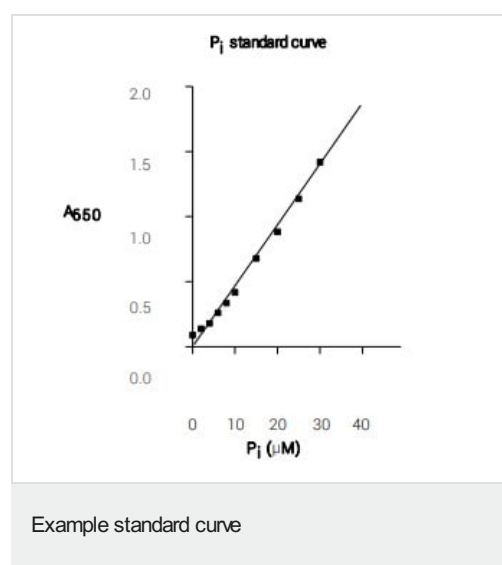
製品の特性

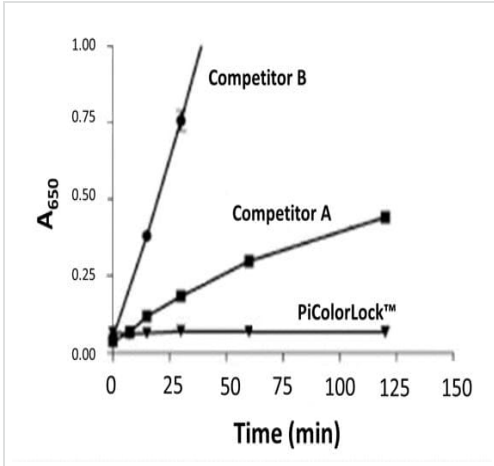
保存方法

Store at +4°C. Please refer to protocols.

内容	2500 tests	600 tests
ab273991 - 0.1 mM Pi Standard	1 x 11ml	1 x 5ml
ab273989 - Accelerator	2 x 1ml	1 x 500 μ l
ab274293 - PiColorLock	1 x 125ml	1 x 30ml
ab273990 - Stabilizer	1 x 55ml	1 x 27500 μ l

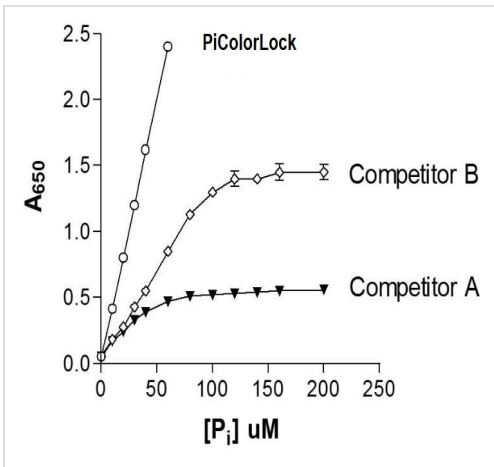
画像





PiColorLock™ background signal competitor graph

ATP has been incubated in three detection reagents. A steadily rising background signal is seen with competitor reagents, whereas PiColorLock™ provides baseline readings.



PiColorLock™ Linear range competitor graph

PiColorLock™ has also been designed to have a large linear range, thus reducing the need for sample dilution. Competitors' products are linear over a much narrower range of concentrations.

Please note: All products are "FOR RESEARCH USE ONLY. NOT FOR USE IN DIAGNOSTIC PROCEDURES"

Our Apromise to you: Quality guaranteed and expert technical support

- Replacement or refund for products not performing as stated on the datasheet
- Valid for 12 months from date of delivery
- Response to your inquiry within 24 hours

- We provide support in Chinese, English, French, German, Japanese and Spanish
- Extensive multi-media technical resources to help you
- We investigate all quality concerns to ensure our products perform to the highest standards

If the product does not perform as described on this datasheet, we will offer a refund or replacement. For full details of the Abpromise, please visit <https://www.abcam.co.jp/abpromise> or contact our technical team.

Terms and conditions

- Guarantee only valid for products bought direct from Abcam or one of our authorized distributors