

# Mitochondrial Staining Reagent - Orange 405 - CytoPainter ab176834

画像数 2

### 製品の概要

---

製品名	Mitochondrial Staining Reagent - Orange 405 - CytoPainter
サンプルの種類	Adherent cells, Suspension cells
アッセイタイプ	Cell-based (qualitative)
種交差性	交差種: Mammals, Other species
製品の概要	<p>Abcam's Mitochondrial Staining Reagent - Orange 405   CytoPainter (ab176834) is part of a series of new fluorogenic probes to label mitochondria of live cells. The proprietary mitochondria dye selectively accumulates in mitochondria probably via the mitochondrial membrane potential gradient. The mitochondrial indicator is a hydrophobic compound that easily permeates intact live cells and becomes trapped in mitochondria after it gets into cells. The fluorescent mitochondrial indicator is retained in mitochondria for a long time since it carries a cell-retaining group. This key feature significantly increases the staining efficiency; make it useful for a variety of studies, including cell adhesion, chemotaxis, multidrug resistance, cell viability, apoptosis and cytotoxicity.</p> <p>MitoOrange 405 Indicator Reagent is well excited by the violet laser at Ex=405 nm, thus is particularly useful for microscopes and flow cytometers with a violet laser source.</p> <p>The dye will stain live cells but is not well-retained after fixation.</p> <p>Review other dyes and kits for <a href="#">mitochondrial staining</a>, or the <a href="#">live cell staining fluorescent dyes guide</a></p>
特記事項	<p>Mitochondria are membrane-enclosed organelles found in most eukaryotic cells. Mitochondria are sometimes described as “cellular power plants” because they generate most of the cellular supply of ATP. In addition to supplying cellular energy, mitochondria are involved in a range of other processes, such as signaling, cellular differentiation, cell death, as well as the control of the cell cycle and cell growth. Mitochondria have been implicated in several human diseases, including mitochondrial disorders and cardiac dysfunction, and may play a role in the aging process. Although most of a cellular DNA is contained in the cell nucleus, the mitochondrion has its own independent genome.</p>
試験プラットフォーム	Fluorescence microscope

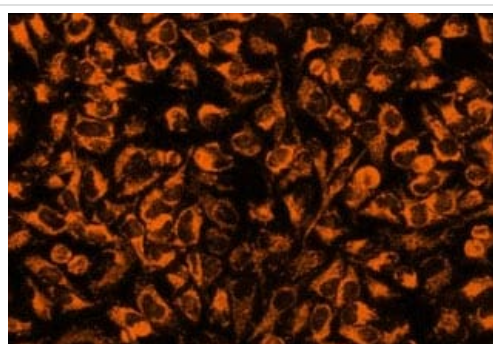
### 製品の特性

**保存方法**

Store at -20°C. Please refer to protocols.

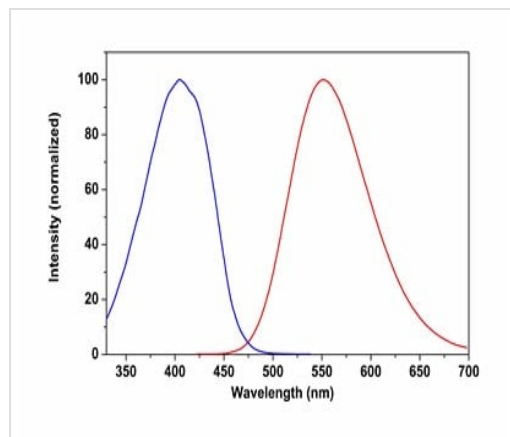
内容	500 tests
CytoPainter MitoOrange 405 Indicator Reagent	1 x 500 tests

**画像**



HeLa cells stained with CytoPainter MitoOrange 405 Indicator Reagent (ab176834)

Image of HeLa cells stained with Abcam's CytoPainter MitoOrange 405 Indicator Reagent (ab176834) in a Costar black wall/clear bottom 96-well plate.



Spectrum of Abcam's CytoPainter MitoOrange 405 Indicator Reagent (ab176834).

Spectrum of CytoPainter MitoOrange 405 Indicator Reagent (ab176834).

**Please note:** All products are "FOR RESEARCH USE ONLY. NOT FOR USE IN DIAGNOSTIC PROCEDURES"

**Our Abpromise to you: Quality guaranteed and expert technical support**

- Replacement or refund for products not performing as stated on the datasheet
- Valid for 12 months from date of delivery
- Response to your inquiry within 24 hours
- We provide support in Chinese, English, French, German, Japanese and Spanish

- Extensive multi-media technical resources to help you
- We investigate all quality concerns to ensure our products perform to the highest standards

If the product does not perform as described on this datasheet, we will offer a refund or replacement. For full details of the Abpromise, please visit <https://www.abcam.co.jp/abpromise> or contact our technical team.

### **Terms and conditions**

---

- Guarantee only valid for products bought direct from Abcam or one of our authorized distributors