

Lysosomal Staining Reagent - Deep Red - Cytopainter ab176829

★★★★★ [1 Abreviews](#) [1 References](#) [画像数 2](#)

製品の概要

製品名	Lysosomal Staining Reagent - Deep Red - Cytopainter
サンプルの種類	Adherent cells, Suspension cells
アッセイタイプ	Cell-based (qualitative)
種交差性	交差種: Mammals, Other species
製品の概要	<p>Abcam's Lysosomal Staining Reagent - Deep Red Cytopainter (ab176829) is part of a series of new fluorogenic probes to label lysosomes of live cells. The proprietary lysotropic dye selectively accumulates in lysosomes probably via the lysosome pH gradient. The lysotropic indicator is a hydrophobic compound that easily permeates intact live cells, and is trapped in lysosomes after it gets into the cells. Its fluorescence is significantly enhanced upon entering lysosomes. The resulting fluorescence can be measured using fluorescence imaging, high-content imaging, microplate fluorometry, or flow cytometry.</p>

CytoPainter LysoDeep Red Indicator Reagent (ab176829) has extremely high photostability as well as excellent cellular retention making it useful for a variety of studies, including cell adhesion, chemotaxis, multidrug resistance, cell viability, apoptosis and cytotoxicity. It is suitable for proliferating and non-proliferating cells, and can be used for both suspension and adherent cells.

Review other dyes and kits for [lysosomal staining](#), or the [live cell staining fluorescent dyes guide](#)

特記事項	<p>Lysosomes are cellular organelles which contain acid hydrolase enzymes to break up waste materials and cellular debris. Lysosomes digest excess or worn-out organelles, food particles, and engulfed viruses or bacteria. The membrane around a lysosome allows the digestive enzymes to work at pH 4.5. The interior of the lysosomes is acidic (pH 4.5-4.8) compared to the slightly alkaline cytosol (pH 7.2). The lysosome maintains this pH differential by pumping protons from the cytosol across the membrane via proton pumps and chloride ion channels.</p>
------	--

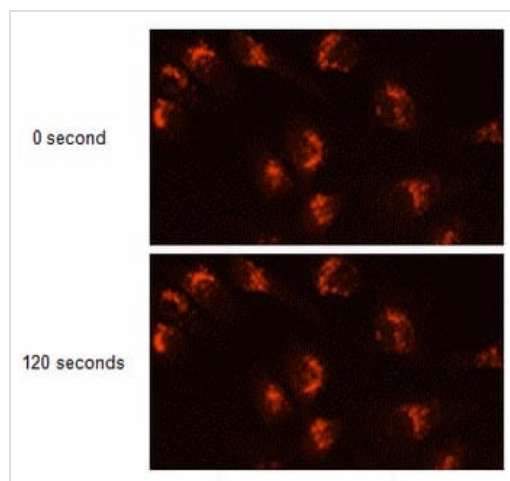
試験プラットフォーム	Fluorescence microscope
------------	-------------------------

製品の特性

保存方法	Store at -20°C. Please refer to protocols.
------	--

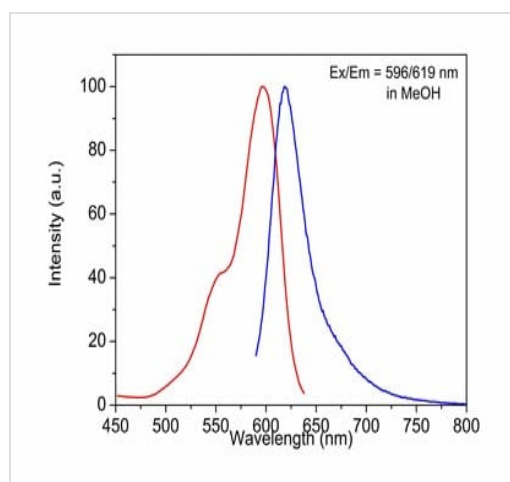
内容	500 tests
CytoPainter LysoDeep Red Indicator Reagent	1 x 500 tests

画像



HeLa cells stained with Cytopainter LysoRed Indicator Reagent (ab176829)

Image of HeLa cells stained with Abcam's CytoPainter LysoDeep Red Indicator Reagent (ab176829) in a Costar black 96-well plate. The TRTIC signals were compared at 0 and 120 seconds exposure time by using an Olympus fluorescence microscope.



Excitation and Emission spectra of CytoPainter LysoDeep Red Indicator Reagent (ab176829)

Excitation and Emission spectra of CytoPainter LysoDeep Red Indicator Reagent (ab176829)

Please note: All products are "FOR RESEARCH USE ONLY. NOT FOR USE IN DIAGNOSTIC PROCEDURES"

Our Abpromise to you: Quality guaranteed and expert technical support

- Replacement or refund for products not performing as stated on the datasheet
- Valid for 12 months from date of delivery

- Response to your inquiry within 24 hours
- We provide support in Chinese, English, French, German, Japanese and Spanish
- Extensive multi-media technical resources to help you
- We investigate all quality concerns to ensure our products perform to the highest standards

If the product does not perform as described on this datasheet, we will offer a refund or replacement. For full details of the Abpromise, please visit <https://www.abcam.co.jp/abpromise> or contact our technical team.

Terms and conditions

- Guarantee only valid for products bought direct from Abcam or one of our authorized distributors