

LDH Assay Kit (Cytotoxicity) ab65391

[35 References](#) [画像数 2](#)

製品の概要

製品名	LDH Assay Kit (Cytotoxicity)
サンプルの種類	Adherent cells, Suspension cells
アッセイタイプ	Enzyme activity
全工程の試験時間	1h 00m
製品の概要	For a more sensitive LDH Assay Kit to use as a cytotoxicity assay, we recommend ab65393 .

LDH Assay Kit (Cytotoxicity) ab65391 provides a fast and simple method for quantitating cytotoxicity based on the measurement of activity of lactate dehydrogenase (LDH) released from damaged cells.

The assay takes ~0.5-1 hr. LDH activity can be determined by a coupled enzymatic reaction: LDH oxidizes lactate to pyruvate which then reacts with tetrazolium salt INT to form formazan. The increase in the amount of formazan produced in culture supernatant directly correlates to the increase in the number of lysed cells. The formazan dye is water-soluble and can be detected by spectrophotometer at 500 nm.

This kit was previously called LDH-Cytotoxicity Assay Kit I.

特記事項

This product is manufactured by BioVision, an Abcam company and was previously called K311 LDH-Cytotoxicity Colorimetric Assay Kit. K311-400 is the same size as the 400 test size of ab65391.

Cell death or cytotoxicity is classically evaluated by the quantification of plasma membrane damage. Unlike many other cytoplasmic enzymes which exist in many cells either in low amount (e.g., alkaline and acid phosphatase) or unstable, LDH is a stable cytoplasmic enzyme present in all cells and rapidly released into the cell culture supernatant upon damage of the plasma membrane.

If you would like to use a fluorometric reading, please refer to [LDH-Cytotoxicity Assay Kit \(Fluorometric\) \(ab197004\)](#).

試験プラットフォーム

Microplate reader

製品の特性

保存方法

Store at -20°C. Please refer to protocols.

内容	400 tests	8000 tests
LDH Catalyst Reagent	1 vial	20 vials
Dye Solution I	1 x 45ml	20 x 45ml

パスウェイ

Fermentation; pyruvate fermentation to lactate; (S)-lactate from pyruvate: step 1/1.

関連疾患

Defects in LDHA are the cause of glycogen storage disease type 11 (GSD11) [MIM:612933]. A metabolic disorder that results in exertional myoglobinuria, pain, cramps and easy fatigue.

配列類似性

Belongs to the LDH/MDH superfamily. LDH family.

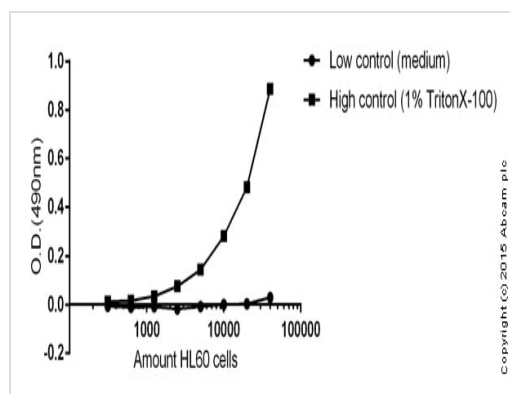
翻訳後修飾

ISGylated.

細胞内局在

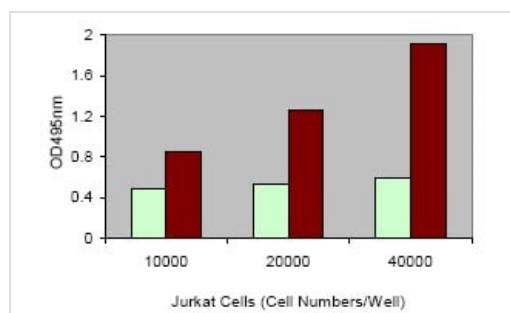
Cytoplasm.

画像



LDH release measured at various cell amounts

Functional studies - ab65391 LDH-Cytotoxicity Assay Kit (400 assays)



Jurkat cells were cultured in a 96-well plate in 100 µl of culture medium. LDH assay was performed using 10 µl of culture medium according to the kit instructions. Light bar: Low control; Dark bar: High control.

Functional Studies - Lactate Dehydrogenase-Cytotoxicity Assay Kit (ab65391)

Please note: All products are "FOR RESEARCH USE ONLY. NOT FOR USE IN DIAGNOSTIC PROCEDURES"

Our Abpromise to you: Quality guaranteed and expert technical support

- Replacement or refund for products not performing as stated on the datasheet
- Valid for 12 months from date of delivery
- Response to your inquiry within 24 hours

- We provide support in Chinese, English, French, German, Japanese and Spanish
- Extensive multi-media technical resources to help you
- We investigate all quality concerns to ensure our products perform to the highest standards

If the product does not perform as described on this datasheet, we will offer a refund or replacement. For full details of the Abpromise, please visit <https://www.abcam.co.jp/abpromise> or contact our technical team.

Terms and conditions

- Guarantee only valid for products bought direct from Abcam or one of our authorized distributors