

# Lactate Dehydrogenase (LDH) Assay Kit (Fluorometric) ab197000

**13 References**    **画像数 3**

### 製品の概要

製品名	Lactate Dehydrogenase (LDH) Assay Kit (Fluorometric)
検出方法	Fluorescent
サンプルの種類	Urine, Serum, Plasma, Other biological fluids, Adherent cells, Suspension cells, Tissue Extracts, Cell culture media
アッセイタイプ	Enzyme activity
検出感度	1 uU/ml
全工程の試験時間	0h 20m
種交差性	<b>交差種:</b> Mammals, Other species
製品の概要	Lactate Dehydrogenase (LDH) Assay Kit (Fluorometric) (ab197000) provides a quick and easy method for monitoring Lactate Dehydrogenase (LDH) activity in a wide variety of samples. In this assay, LDH converts lactate into pyruvate and NADH, which reacts with the specific fluorescent probe to generate an intense fluorescent product (Ex/Em = 535/587 nm).

This kit is simple, highly sensitive and high-throughput adaptable and can detect LDH activity as low as 1 µU/mL.

LDH assay protocol summary:

- add samples and standards to wells
- add reaction mix
- analyze with microplate reader every 2-3 min for 10-30 min

**特記事項** This product is manufactured by BioVision, an Abcam company and was previously called K730 PicoProbe™ Lactate Dehydrogenase Activity Assay Kit. K730-500 is the same size as the 500 test size of ab197000.

Lactate dehydrogenase (LDH, L-Lactate NAD oxidoreductase, EC 1.1.1.27) is an ubiquitous enzymes among vertebrate organisms which catalyzes the reversible conversion of pyruvate to lactate, with concomitant conversion of NADH and NAD<sup>+</sup>. LDH is cytoplasmic in its cellular location and in any one tissue is composed of one or two of five possible isoenzymes. During tissue damage, LDH is released into the bloodstream; therefore it serves as a marker for various diseases and common injuries.

**試験プラットフォーム** Microplate reader

## 製品の特性

### 保存方法

Store at -20°C. Please refer to protocols.

内容	500 tests	500 tests
Developer Mix I	1 vial	1 vial
LDH Assay Buffer	1 x 110ml	1 x 110ml
LDH Positive Control	1 vial	1 vial
NADH Standard I	1 vial	1 vial
PicoProbe (1.5 ml)	1 x 1.4ml	1 x 1.4ml

### パスウェイ

Fermentation; pyruvate fermentation to lactate; (S)-lactate from pyruvate: step 1/1.

### 関連疾患

Defects in LDHA are the cause of glycogen storage disease type 11 (GSD11) [MIM:612933]. A metabolic disorder that results in exertional myoglobinuria, pain, cramps and easy fatigue.

### 配列類似性

Belongs to the LDH/MDH superfamily. LDH family.

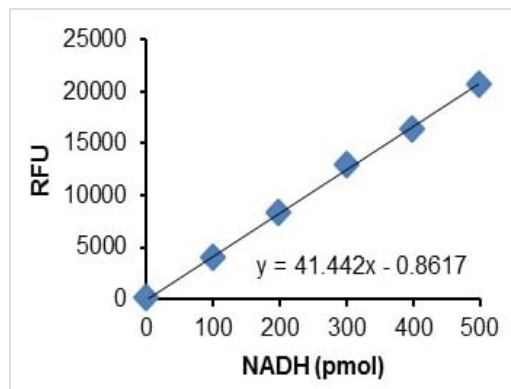
### 翻訳後修飾

ISGylated.

### 細胞内局在

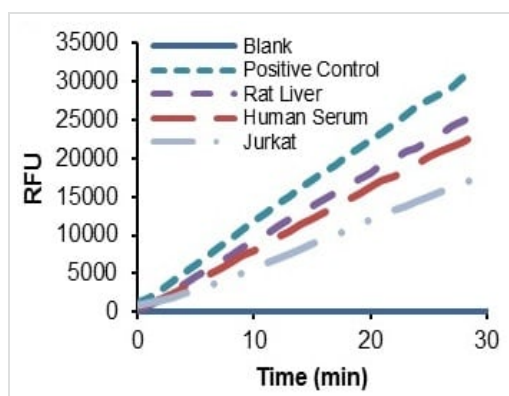
Cytoplasm.

## 画像



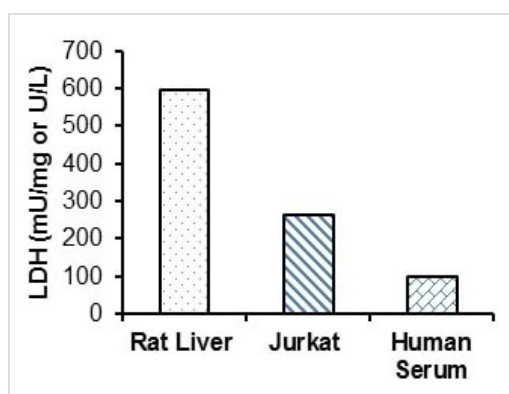
Typical NADH Standard Curve obtained following assay protocol.

Functional Studies - Lactate Dehydrogenase (LDH)  
Assay Kit (Fluorometric) (ab197000)



Kinetic measurement of Lactate Dehydrogenase activity in a range of biological samples.

Functional Studies - Lactate Dehydrogenase (LDH)  
Assay Kit (Fluorometric) (ab197000)



Relative LDH Activity was calculated in lysates prepared from rat liver (0.037  $\mu$ g protein), Jurkat cells (0.053  $\mu$ g protein), and Human serum (0.2  $\mu$ g protein).

Functional Studies - Lactate Dehydrogenase (LDH)  
Assay Kit (Fluorometric) (ab197000)

**Please note:** All products are "FOR RESEARCH USE ONLY. NOT FOR USE IN DIAGNOSTIC PROCEDURES"

### Our Abpromise to you: Quality guaranteed and expert technical support

- Replacement or refund for products not performing as stated on the datasheet
- Valid for 12 months from date of delivery
- Response to your inquiry within 24 hours
- We provide support in Chinese, English, French, German, Japanese and Spanish
- Extensive multi-media technical resources to help you

- We investigate all quality concerns to ensure our products perform to the highest standards

If the product does not perform as described on this datasheet, we will offer a refund or replacement. For full details of the Abpromise, please visit <https://www.abcam.co.jp/abpromise> or contact our technical team.

### **Terms and conditions**

---

- Guarantee only valid for products bought direct from Abcam or one of our authorized distributors