

Golgi/ER Staining Kit - Cytopainter ab139485

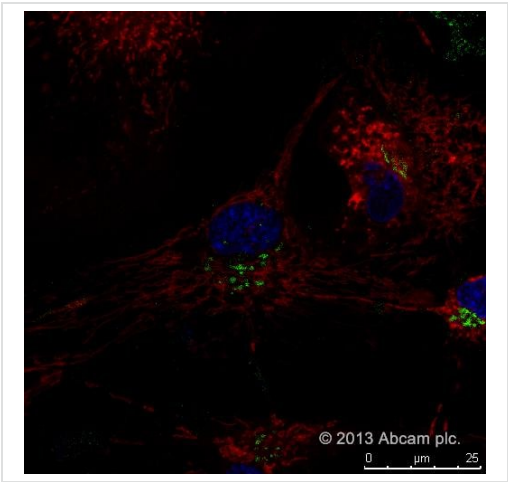
★★★★★ [3 Abreviews](#) [2 References](#) [画像数 5](#)

製品の概要

製品名	Golgi/ER Staining Kit - Cytopainter
サンプルの種類	Adherent cells, Suspension cells
アッセイタイプ	Cell-based
種交差性	交差種: Mammals, Other species
製品の概要	<p>Golgi/ER Staining Kit Cytopainter (ab139485) provides a rapid and convenient method for visualizing the Golgi and ER within living cells, without requiring lengthy transfection procedures. ab139485 is validated with human cervical carcinoma cell line HeLa, human T-lymphocyte cell line Jurkat, canine kidney cell line MDCK, and human bone osteosarcoma epithelial cell line U2OS. The kit should also be suitable for identifying Golgi body and endoplasmic reticulum perturbing agents and thus can be a useful tool for examining the transport and recycling of molecules from the GA to ER in cellular secretory pathways.</p> <p>Organelle Reagent III contains a mixture of GA-selective, ER-selective and nucleus-selective dyes suitable for live cell staining. Compared with other commercially available dyes for labeling Golgi bodies, the green dye component of the Reagent III is more faithfully localized to the Golgi apparatus, with minimal staining of the endoplasmic reticulum. The red dye component of the Reagent III stains the endoplasmic reticulum with high fidelity and is specifically designed for use with green fluorescing probes.</p> <p>Review other dyes and kits for Golgi staining, or the live cell staining fluorescent dyes guide</p>
試験プラットフォーム	Fluorescence microscope

製品の特性

保存方法	Please refer to protocols.	
内容	100 tests	
10X Assay Buffer 1	1 x 15ml	
50X Assay Buffer 2	1 x 1.2ml	
Organelle Reagent III (lyophilized)	1 vial	

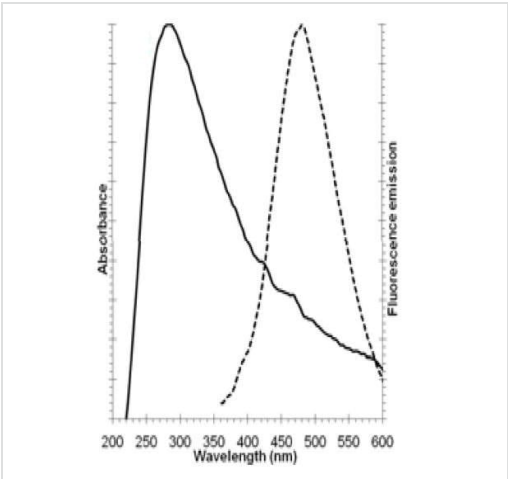


Fluorescent staining using CytoPainter Golgi/ER Staining Kit (ab139485)

This image is courtesy of an Abreview submitted by Edwin Hernandez

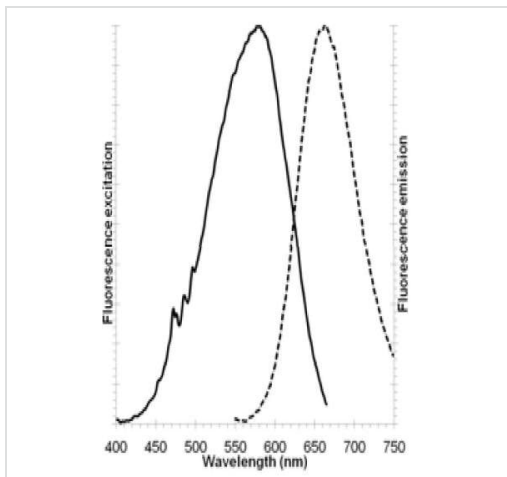
CytoPainter Golgi/ER Staining Kit (ab139485) staining live rat astrocyte cells. Cells were seeded on a Ibidi u-slide 18 well flat poly-L-Lysine coated. Cells were washed with 1XAssay Solution, incubated for 30 min at 37° with the Organelle Reagent III, washed 3 times with ice cold medium (DMEM F-12) and incubated again in medium for 30 minutes at 37°.

ER (red), Golgi (green), Nuclear (blue).



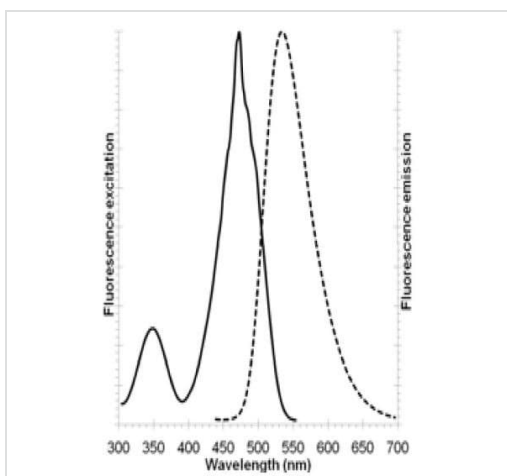
Absorbance and fluorescent emission - blue dye

Absorbance and fluorescent emission spectra for the blue dye



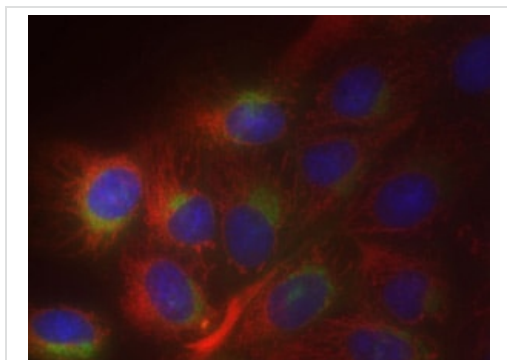
Fluorescence excitation and emission spectra for the red dye

Fluorescence image - red dye



Fluorescence excitation and emission spectra for the green dye

Fluorescence image - green dye



ab139485 kit staining of MDCK epithelial cells. The ER (red), Golgi (green) and nuclear (blue) dyes highlight their respective subcellular targets with high dependability.

Fluorescent staining using Organelle Reagent III

Please note: All products are "FOR RESEARCH USE ONLY. NOT FOR USE IN DIAGNOSTIC PROCEDURES"

Our Abpromise to you: Quality guaranteed and expert technical support

- Replacement or refund for products not performing as stated on the datasheet

- Valid for 12 months from date of delivery
- Response to your inquiry within 24 hours
- We provide support in Chinese, English, French, German, Japanese and Spanish
- Extensive multi-media technical resources to help you
- We investigate all quality concerns to ensure our products perform to the highest standards

If the product does not perform as described on this datasheet, we will offer a refund or replacement. For full details of the Abpromise, please visit <https://www.abcam.co.jp/abpromise> or contact our technical team.

Terms and conditions

- Guarantee only valid for products bought direct from Abcam or one of our authorized distributors