

Fixable Cell Viability Assay Kit (Fluorometric - Blue Ex 405 nm) - Cytopainter ab176738

画像数 3

製品の概要

製品名	Fixable Cell Viability Assay Kit (Fluorometric - Blue Ex 405 nm) - Cytopainter
検出方法	Fluorescent
サンプルの種類	Adherent cells, Suspension cells
アッセイタイプ	Cell-based (quantitative)
種交差性	交差種: Mammals, Other species
製品の概要	Fixable Cell Viability Assay Kit (Fluorometric - Blue Ex 405 nm) Cytopainter (ab176738) is used to evaluate the viability of mammalian cells by flow cytometry.

The fluorescent dye provided in the kit is retained in cells by reacting with cellular components. For viable cells, only the cell-surface amines are available to react with the dye while for the necrotic cells or the other cells with compromised membranes, the reactive dye reacts with cell surface amines and intracellular amines, resulting in more intense fluorescent staining. The difference in fluorescence intensity between the live and dead cell populations is ~100-500 fold and can be completely preserved after fixation.

The dye is designed to label cells at Ex/Em =410/450 nm excited with a violet laser at Ex=405 nm.

特記事項

Related assays
Review the [cell health assay guide](#) to learn about kits to perform a [cell viability assay](#), [cytotoxicity assay](#) and [cell proliferation assay](#).

試験プラットフォーム

Flow cytometer

製品の特性

保存方法 Store at -20°C. Please refer to protocols.

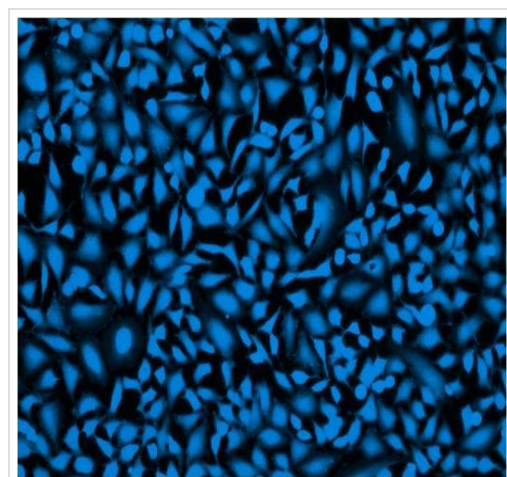
内容	200 tests
DMSO	1 x 200µl

内容	200 tests
Tracking dye Violet 450	1 vial

関連性

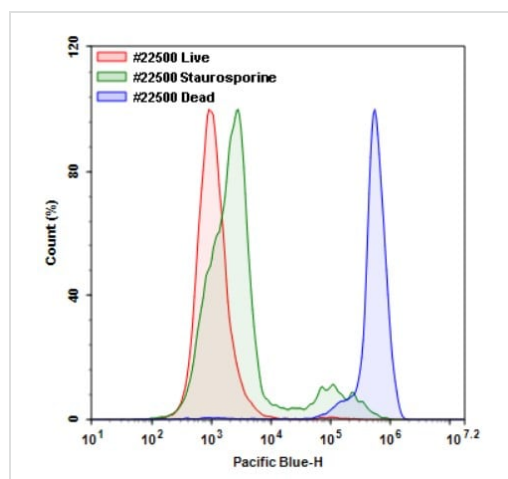
Cell viability is a determination of living or dead cells, based on a total cell population. Cell viability assess healthy cells in a sample, with no distinction between dividing or quiescent cells. An increase in cell viability indicates cell growth, while a decrease in viability can generally be interpreted as the result of either toxic effects of compounds/agents or suboptimal culture conditions.

画像



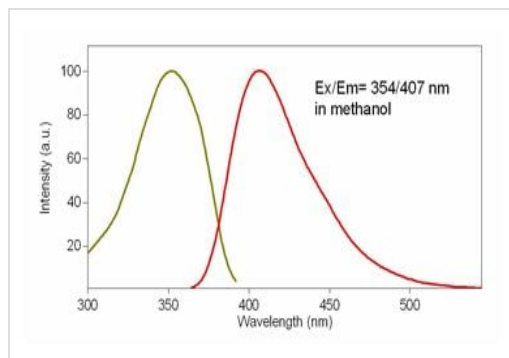
HeLa cells stained with CytoPainter Fixable Cell Viability Assay Kit (Fluorometric - Blue Ex 405 nm) (ab176738)

HeLa cells fixed with formaldehyde and stained with Abcam's CytoPainter Fixable Cell Viability Assay Kit (Fluorometric - Blue Ex 405 nm) (ab176738) in a Costar black wall/clear bottom 96-well plate.



Jurkat cells stained with CytoPainter Fixable Cell Viability Assay Kit (Fluorometric - Blue Ex 405 nm) (ab176738)

Detection of Jurkat cell viability by ab176738. Jurkat cells were treated and stained with Stain It™ Violet 450, and then fixed in 3.7% formaldehyde and analyzed by flow cytometry. Live (Red), staurosporine treated (Green) and heat-treated (Blue) cells were distinguished with Pacific Blue channel.



Excitation and Emission spectra of CytoPainter Fixable Cell Viability Assay Kit.

Excitation and Emission spectra of CytoPainter
Fixable Cell Viability Assay Kit (Fluorometric - Blue
Ex 405 nm) (ab176738)

Please note: All products are "FOR RESEARCH USE ONLY. NOT FOR USE IN DIAGNOSTIC PROCEDURES"

Our Abpromise to you: Quality guaranteed and expert technical support

- Replacement or refund for products not performing as stated on the datasheet
- Valid for 12 months from date of delivery
- Response to your inquiry within 24 hours
- We provide support in Chinese, English, French, German, Japanese and Spanish
- Extensive multi-media technical resources to help you
- We investigate all quality concerns to ensure our products perform to the highest standards

If the product does not perform as described on this datasheet, we will offer a refund or replacement. For full details of the Abpromise, please visit <https://www.abcam.co.jp/abpromise> or contact our technical team.

Terms and conditions

- Guarantee only valid for products bought direct from Abcam or one of our authorized distributors