

ECL Substrate Kit (Ultra High Sensitivity) ab133409

★★★★★ [1 Abreviews](#) [10 References](#) [画像数 2](#)

製品の概要

製品名	ECL Substrate Kit (Ultra High Sensitivity)
製品の概要	<p>Ultra High Sensitivity ECL Substrate Kit ab133409 is a horseradish peroxidase (HRP) substrate specially developed for Western blotting detection of very low abundance proteins with 1.2pg-2ng of protein per band. ECL Substrate Kit ab133409 produces a strong, long-lived signal, which, combined with very low background levels, allows for long exposure times enabling the detection of low-abundance proteins. Additionally, the signal from ECL Substrate Kit ab133409 is linear with respect to protein amount over a broad range of concentrations, allowing the user to accurately quantify protein bands.</p> <p>ECL Substrate Kit ab133409 is most suitable for detection of low-abundance proteins or in situations when amounts of available primary antibodies are very limited and high dilution factors are desired, or when primary antibodies have relatively low binding constants.</p> <p>This ECL Substrate Kit also compatible with X-ray film detection, though the limited dynamic range of film will make resulting data less quantitative. The ECL substrate also produces a chemifluorescent signal that can be detected with a fluorescence imaging system using appropriate excitation and emission settings.</p> <p>Our ECL kits include our popular ECL Substrate Kit ab65623 and our high sensitivity ECL substrate kits:</p> <ul style="list-style-type: none">- High Sensitivity ECL Substrate Kit ab133406 to detect 23pg-187ng of protein per band- Very High Sensitivity ECL Substrate Kit ab133408 to detect 4.6pg-4.7ng of protein per band- this kit (Ultra High Sensitivity ECL Substrate Kit ab133409) to detect 1.2pg-2ng of protein per band <p>Detection ranges in pg and ng stated above should be used for guidance only as detection range is dependent on the molecular weight of a protein.</p> <p>This product was previously called Optiblot ECL Ultra Detect Kit (1.2pg-2ng).</p>
特記事項	<p>Use:</p> <ul style="list-style-type: none">- 100ml kit for 1000cm² membrane- 200ml kit for 2000cm² membrane <p>The primary antibody can often be diluted 5 to 10 fold more than usual when using this ECL substrate. A typical primary antibody dilution range using the substrate is 1/5000 - 1/20,000, with</p>

a typical secondary antibody dilution range of 1/20,000 - 1/100,000. Some optimisation may be required.

アプリケーション

適用あり: WB

製品の特性

保存方法

Store at +4°C. Please refer to protocols.

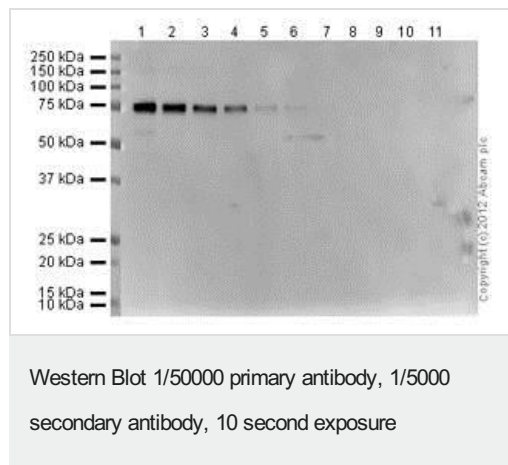
内容	200 ml	100 ml	20 ml
Luminol/enhancer solution	1 x 100ml	1 x 50ml	1 x 10ml
Peroxide Chemiluminescent Detection Reagent	1 x 100ml	1 x 50ml	1 x 10ml

アプリケーション

The Abpromise guarantee Abpromise保証は、次のテスト済みアプリケーションにおけるab133409の使用に適用されます
アプリケーションノートには、推奨の開始希釈率がありますが、適切な希釈率につきましてはご検討ください。

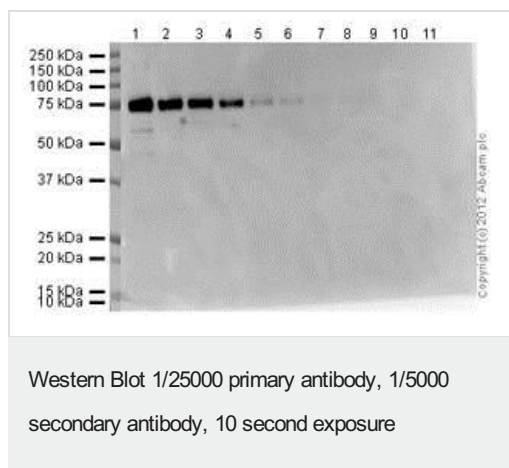
アプリケーション	Abreviews	特記事項
WB		Use at an assay dependent concentration.

画像



Each lane contains the following amount of COX2 recombinant protein (**ab58868**): 1) 100ng 2) 50ng 3) 25ng 4) 12.5ng 5) 6.25ng 6) 3.13ng 7) 1.56ng 8) 780pg 9) 390pg 10) 195pg 11) 98pg. The blot was probed with rabbit anti-COX2 antibody (**ab15191**) at 1/50000 dilution and with a rabbit secondary (**ab97080**) at 1/5000 dilution. The blot was developed with 20ml of Optiblot ECL Ultra Detect.

Exposure time: 10 seconds



Each lane contains the following amount of COX2 recombinant protein (**ab58868**): 1) 100ng 2) 50ng 3) 25ng 4) 12.5ng 5) 6.25ng 6) 3.13ng 7) 1.56ng 8) 780pg 9) 390pg 10) 195pg 11) 98pg. The blot was probed with rabbit anti-COX2 antibody (**ab15191**) at 1/25000 dilution and with a rabbit secondary (**ab97080**) at 1/5000 dilution. The blot was developed with 20ml of Optiblot ECL Ultra Detect.

Exposure time: 10 seconds

Please note: All products are "FOR RESEARCH USE ONLY. NOT FOR USE IN DIAGNOSTIC PROCEDURES"

Our Abpromise to you: Quality guaranteed and expert technical support

- Replacement or refund for products not performing as stated on the datasheet
- Valid for 12 months from date of delivery
- Response to your inquiry within 24 hours
- We provide support in Chinese, English, French, German, Japanese and Spanish
- Extensive multi-media technical resources to help you
- We investigate all quality concerns to ensure our products perform to the highest standards

If the product does not perform as described on this datasheet, we will offer a refund or replacement. For full details of the Abpromise, please visit <https://www.abcam.co.jp/abpromise> or contact our technical team.

Terms and conditions

- Guarantee only valid for products bought direct from Abcam or one of our authorized distributors