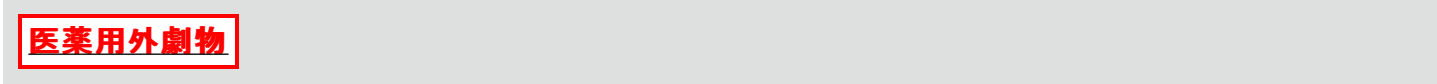


ATPase Assay Kit ab270551

画像数 3



製品の概要

製品名	ATPase Assay Kit
検出方法	Colorimetric
アッセイタイプ	Enzyme activity (quantitative)
ステップ	Multiple steps standard assay
製品の概要	<p>ATPase Assay Kit (ab270551) employs a 96-well plate format with all of the reagents necessary for measuring ATPase activity. The kit also contains PiColorLock™ (a superior malachite green reagent) which has special additives to prevent backgrounds arising from non-enzymatic ATP hydrolysis. The PiColorLock™ assay is based on the change in absorbance of the dye malachite green in the presence of phosphomolybdate complexes. Unlike most malachite dye-based solutions, PiColorLock™ gives a stable end-point signal and is not prone to precipitation. PiColorLock™ has special additives to prevent backgrounds arising from non-enzymatic ATP hydrolysis.</p> <p>*For samples with free Pi, please check the Inorganic Phosphate Binding Resin (ab270547).</p> <p>This product is manufactured by Expedeon, an Abcam company. It was previously called ATPase Enzyme Assay Kit. Expedeon product code 601-0120 is the same as the 2 x 96 tests size of this product.</p>
試験プラットフォーム	Microplate

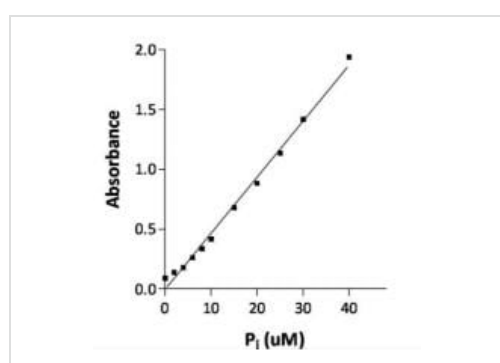
製品の特性

保存方法 Please refer to protocols.

内容	2 x 96 tests
ab274109 - 0.1 M Magnesium chloride	1 x 1500µl
ab273991 - 0.1 mM Pi Standard	1 x 5ml
ab274110 - 0.5 M Tris pH 7.5	1 x 5ml

内容	2 x 96 tests
ab274107 - 96-well clear low binding plates	2 units
ab273989 - Accelerator	1 x 500μl
ab274108 - ATP (lyophilized)	4 vials
ab274293 - PiColorLock	1 x 10ml
ab273990 - Stabilizer	1 x 5ml

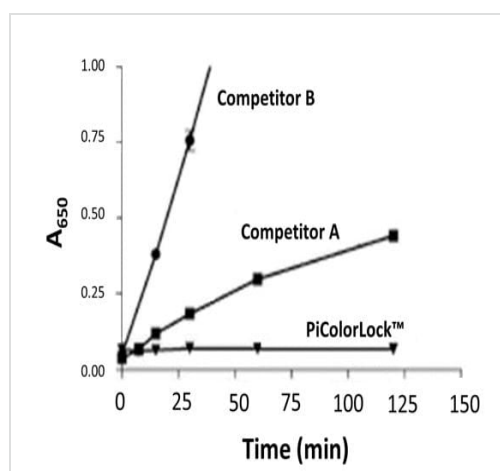
画像



Standard curve

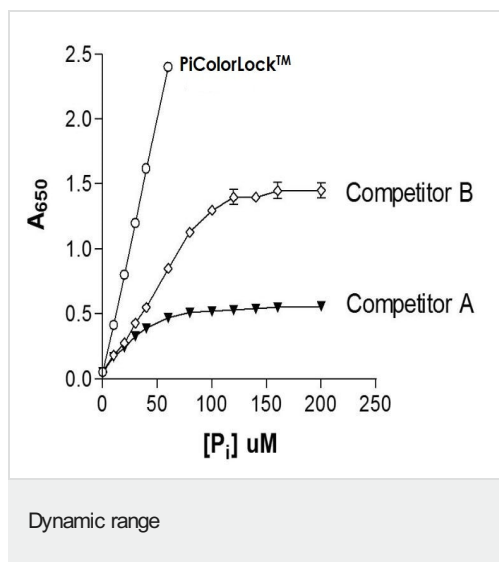
Data provided **for demonstration purposes only**.

Standard Curve for ATPase Assay Kit (ab270551).



Background stability

ATP has been incubated in three detection reagents. A steadily rising background signal is seen with competitor reagents, whereas PiColorLock™ provides baseline readings.



Dynamic Range for ATPase Assay Kit (ab270551).

PiColorLock™ has been designed to have a large linear range, thus reducing the need for sample dilution. Competitors' products are linear over a much narrower range of concentrations.

Please note: All products are "FOR RESEARCH USE ONLY. NOT FOR USE IN DIAGNOSTIC PROCEDURES"

Our Abpromise to you: Quality guaranteed and expert technical support

- Replacement or refund for products not performing as stated on the datasheet
- Valid for 12 months from date of delivery
- Response to your inquiry within 24 hours
- We provide support in Chinese, English, French, German, Japanese and Spanish
- Extensive multi-media technical resources to help you
- We investigate all quality concerns to ensure our products perform to the highest standards

If the product does not perform as described on this datasheet, we will offer a refund or replacement. For full details of the Abpromise, please visit <https://www.abcam.co.jp/abpromise> or contact our technical team.

Terms and conditions

- Guarantee only valid for products bought direct from Abcam or one of our authorized distributors