

# NF-κB Signaling Pathway Antibody Sampler Panel ab228529

リコンビナント

1 References 画像数 6

## 製品の概要

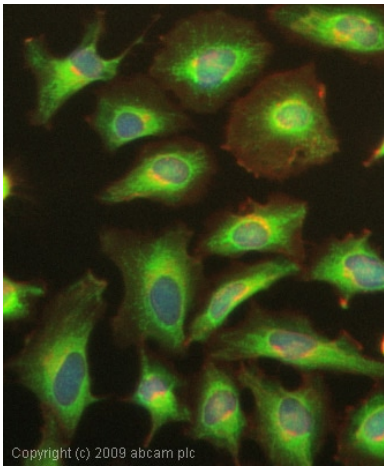
製品名	NF-κB Signaling Pathway Antibody Sampler Panel
製品の概要	ab228529, NF-κB Signaling Pathway Antibody Panel, is a collection of 1 anti-rabbit (HRP) secondary antibody and 5 recombinant rabbit monoclonal antibodies against IκB alpha (p S36), IκB alpha, NFκB p105, NF-κB p65 (p S536), and NF-κB p65 provided in 10 μl trial sizes.
特記事項	<p><b><u>Explore our range of antibody sample panels</u></b> designed to provide you with a variety of trial-size antibodies in a convenient and cost-effective format.</p> <p>Directly conjugated versions of our antibodies are available and ready to use for multicolor flow cytometry or immunocytochemistry analysis. <b><u>Carrier-free formulations</u></b> are also available for easy conjugation to labels of your choice. Please refer to the ‘Associated products’ section below.</p>

## 製品の特性

保存方法 Store at -20°C. Please refer to protocols.

内容	1 kit
<a href="#">ab133462 - Anti-IκB alpha (phospho S36) antibody [EPR6235(2)]</a>	1 x 10μl
<a href="#">ab32518 - Anti-IκB alpha antibody [E130]</a>	1 x 10μl
<a href="#">ab32360 - Anti-NFκB p105 / p50 antibody [E381]</a>	1 x 10μl
<a href="#">ab76302 - Anti-NF-κB p65 (phospho S536) antibody [EP2294Y]</a>	1 x 10μl
<a href="#">ab32536 - Anti-NF-κB p65 antibody [E379]</a>	1 x 10μl
<a href="#">ab205718 - Goat Anti-Rabbit IgG H+L (HRP)</a>	1 x 100μg

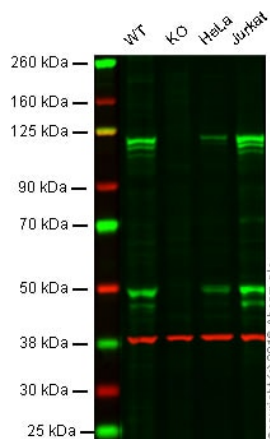
## 画像



Anti-IKB alpha antibody [E130] (

**ab32518**

)



Anti-NFkB p105 / p50 antibody [E381] (

**ab32360**

)

ICC/IF image of unpurified **ab32518** stained HeLa cells. The cells were 100% methanol fixed (5 min) and then incubated in 1%BSA / 10% normal goat serum / 0.3M glycine in 0.1% PBS-Tween for 1h to permeabilise the cells and block non-specific protein-protein interactions. The cells were then incubated with the antibody (**ab32518**, 1/1000 dilution) overnight at +4°C. The secondary antibody (green) was Alexa Fluor® 488 goat anti-rabbit IgG (H+L) used at a 1/1000 dilution for 1h. Alexa Fluor® 594 WGA was used to label plasma membranes (red) at a 1/200 dilution for 1h. DAPI was used to stain the cell nuclei (blue) at a concentration of 1.43µM.

#### Predicted band: 105 kDa

**Lane 1:** Wild-type HAP1 cell lysate (20 µg)

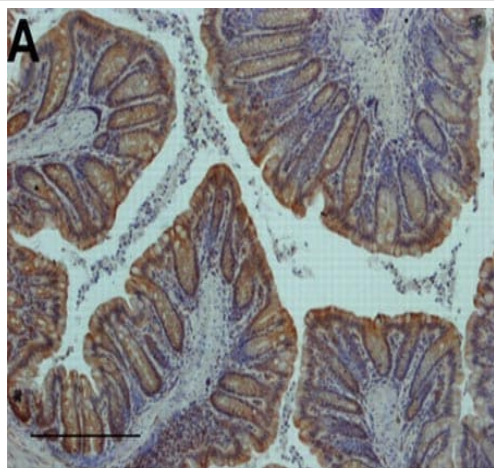
**Lane 2:** NFkB p105 / p50 knockout HAP1 cell lysate (20 µg)

**Lane 3:** HeLa cell lysate (20 µg)

**Lane 4:** Jurkat cell lysate (20 µg)

**Lanes 1 - 4:** Merged signal (red and green). Green - Anti-NFkB p105 / p50 antibody [E381] (**ab32360**) observed at 120, 50 kDa. Red - loading control, **ab8245**, observed at 37 kDa.

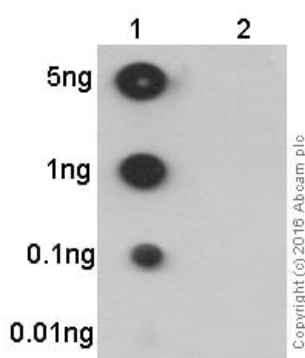
**ab32360** was shown to specifically react with NFkB p105 / p50 when NFkB p105 / p50 knockout samples were used. Wild-type and NFkB p105 / p50 knockout samples were subjected to SDS-PAGE. **ab32360** and **ab8245** (loading control to GAPDH) were diluted at 1/1000 and 1/10 000 respectively and incubated overnight at 4°C. Blots were developed with Goat anti-Rabbit IgG H&L (IRDye® 800CW) preadsorbed (**ab216773**) and Goat anti-Mouse IgG H&L (IRDye® 680RD) preadsorbed (**ab216776**) secondary antibodies at 1/10000 dilution for 1 hour at room temperature before imaging.



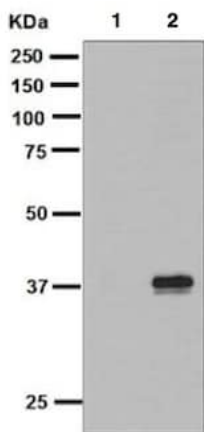
Anti-NF-kB p65 antibody [E379]

Immunohistochemical analysis of colon sections from mice, staining NF-kB p65 with [ab32536](#).

Antigen retrieval was performed by microwave heating in citrate buffer, pH 6. Sections were incubated overnight with primary antibody (1/250) and staining was detected using [ab80437](#) EXPOSE Rabbit specific HRP/DAB detection IHC kit.



Anti-NF-kB p65 (phospho S536) antibody [EP2294Y]



Anti-IKB alpha (phospho S36) antibody  
[EPR6235(2)]

Primary - Anti-IKB alpha (phospho S36) antibody [EPR6235(2)]  
(**ab133462**) at 1/10000 dilution

Lane 1: HeLa cell lysate, 10 µg

Lane 2: HeLa cell lysate treated with FBS and Calyculin A, 10 µg

Secondary - HRP labeled goat anti-rabbit IgG, 1/2000 dilution

Predicted band: 35 kDa

Actual band: 40 kDa

### Why choose a recombinant antibody?



**Research with confidence**  
Consistent and reproducible results



**Long-term and scalable supply**  
Recombinant technology



**Success from the first experiment**  
Confirmed specificity



**Ethical standards compliant**  
Animal-free production

NF-κB Signaling Pathway Antibody Sampler Panel  
(ab228529)

**Please note:** All products are "FOR RESEARCH USE ONLY. NOT FOR USE IN DIAGNOSTIC PROCEDURES"

### Our Abpromise to you: Quality guaranteed and expert technical support

- Replacement or refund for products not performing as stated on the datasheet
- Valid for 12 months from date of delivery
- Response to your inquiry within 24 hours
- We provide support in Chinese, English, French, German, Japanese and Spanish
- Extensive multi-media technical resources to help you
- We investigate all quality concerns to ensure our products perform to the highest standards

If the product does not perform as described on this datasheet, we will offer a refund or replacement. For full details of the Abpromise, please visit <https://www.abcam.co.jp/abpromise> or contact our technical team.

## Terms and conditions

---

- Guarantee only valid for products bought direct from Abcam or one of our authorized distributors