

# Macrophage Marker (CD11b, CD68, CD163, CD14, CD16) Antibody Panel - Human ab254013

リコンビナント

画像数 8

### 製品の概要

製品名	Macrophage Marker (CD11b, CD68, CD163, CD14, CD16) Antibody Panel - Human
種交差性	交差種: Human
製品の概要	<p>Macrophage Marker (CD11b, CD68, CD163, CD14, CD16) Antibody Panel - Human ab254013 contains multiple trial-sized versions of anti-human antibody clones against CD11b, CD68, CD163, CD14, CD16, specifically selected for high performance in various applications. This panel contains 5 recombinant rabbit monoclonal antibodies against human CD11b, CD68, CD163, CD14, CD16. They are provided as a sampler panel to allow you to easily evaluate each in your required applications.</p> <p>For guidelines on how to use each antibody within the panel, please consult the individual datasheet for each antibody.</p> <p>Panel contains:</p> <ul style="list-style-type: none"><li>- Rabbit monoclonal [EP1345Y] to CD11b (20 µL) <a href="#">ab52478</a></li><li>- Rabbit monoclonal [EPR20545] to CD68 (20 µL) <a href="#">ab213363</a></li><li>- Rabbit monoclonal [EPR19518] to CD163 (20 µL) <a href="#">ab182422</a></li><li>- Rabbit monoclonal [SP192] to CD14 (20 µL) <a href="#">ab183322</a></li><li>- Rabbit monoclonal [SP175] to CD16 (20 µL) <a href="#">ab183354</a></li></ul>
特記事項	<p><b>Explore our range of antibody sample panels</b> designed to provide you with a variety of trial-size antibodies in a convenient and cost-effective format.</p> <p>Directly conjugated versions of our antibodies are available and ready to use for multicolor flow cytometry or immunocytochemistry analysis. <b>Carrier-free formulations</b> are also available for easy conjugation to labels of your choice. Please refer to the 'Associated products' section below.</p> <p>Our RabMAb<sup>®</sup> technology is a patented hybridoma-based technology for making rabbit</p>

monoclonal antibodies. For details on our patents, please refer to [RabMAb® patents](#).

## 製品の特性

### 保存方法

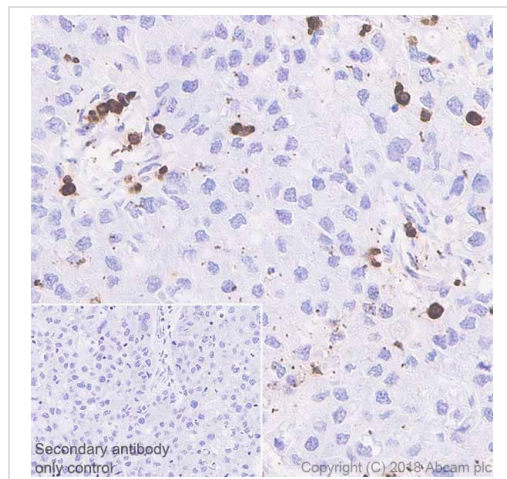
Store at -20°C. Please refer to protocols.

内容	1 kit
<a href="#">ab52478 - Anti-CD11b antibody [EP1345Y] - C-terminal</a>	2 x 10µl
<a href="#">ab183322 - Anti-CD14 antibody [SP192]</a>	2 x 10µl
<a href="#">ab183354 - Anti-CD16 antibody [SP175]</a>	2 x 10µl
<a href="#">ab182422 - Anti-CD163 antibody [EPR19518]</a>	2 x 10µl
<a href="#">ab213363 - Anti-CD68 antibody [EPR20545]</a>	2 x 10µl

### 細胞内局在

CD11b: Membrane. CD14: Cell membrane. CD16: Cell membrane. Secreted. Exists also as a soluble receptor. CD68: Cell membrane and Endosome membrane. Lysosome membrane. CD163: Secreted and Cell membrane. Isoform 1 and isoform 2 show a lower surface expression when expressed in cells.

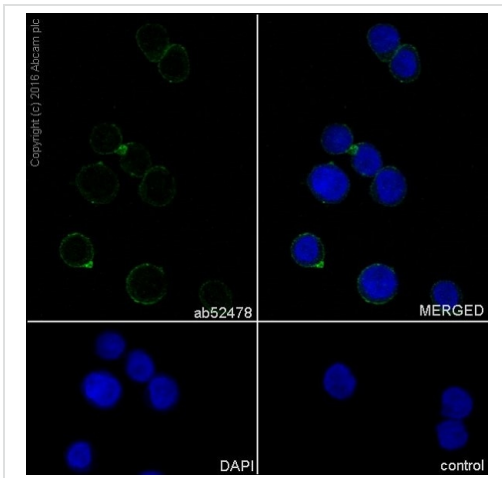
## 画像



Immunohistochemistry (Formalin/PFA-fixed paraffin-embedded sections) analysis of human cervical cancer tissue sections labeling CD11b with purified [ab52478](#) at 1:1000 dilution (0.28 µg/ml). Heat mediated antigen retrieval was performed using [ab93684](#) (Tris/EDTA buffer, pH 9.0) ImmunoHistoProbe one step HRP Polymer (ready to use) was used as the secondary antibody. Hematoxylin was used as a counterstain.

Negative control: PBS instead of the primary antibody (inset).

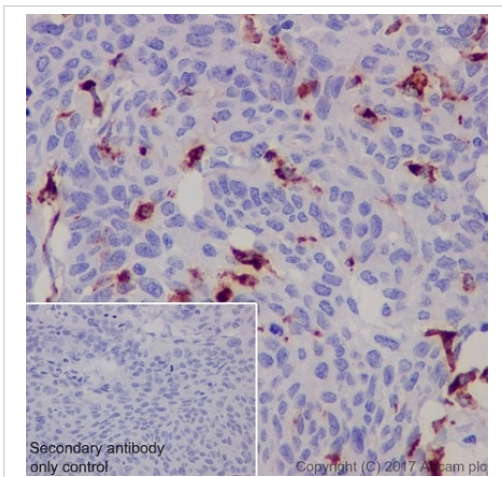
Immunohistochemistry (Formalin/PFA-fixed paraffin-embedded sections) - Anti-CD11b antibody [EP1345Y]



Immunocytochemistry/ Immunofluorescence - Anti-CD11b antibody [EP1345Y]

Unpurified **ab52478** staining CD11b in the THP-1 (Human monocytic leukemia cell line) cell line by ICC/IF (Immunocytochemistry/immunofluorescence).

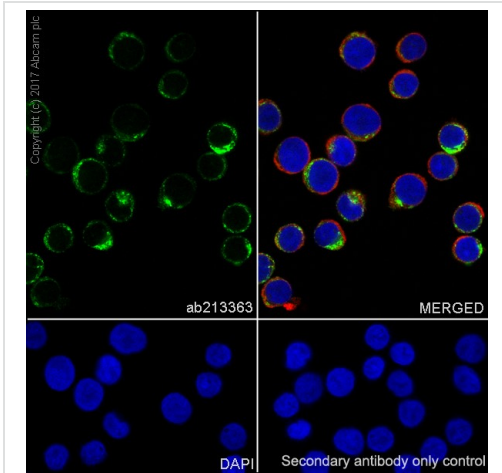
Cells were fixed with 100% methanol. Samples were incubated with primary antibody (1/250). **ab150077** was used as the secondary antibody (1/1000). Nuclei were stained with DAPI.



Immunohistochemistry (Formalin/PFA-fixed paraffin-embedded sections) - Anti-CD68 antibody [EPR20545]

Immunohistochemical analysis of paraffin-embedded human cervical carcinoma tissue labeling CD68 with **ab213363** at 1/8000 dilution, followed by Goat anti-Rabbit IgG H&L (HRP) Ready to use. Cytoplasmic staining on macrophages of human cervical carcinoma is observed (PMID: 12118106). Counter stained with hematoxylin.

Secondary antibody only control: Used PBS instead of primary antibody, secondary antibody is Goat anti-Rabbit IgG H&L (HRP) Ready to use.

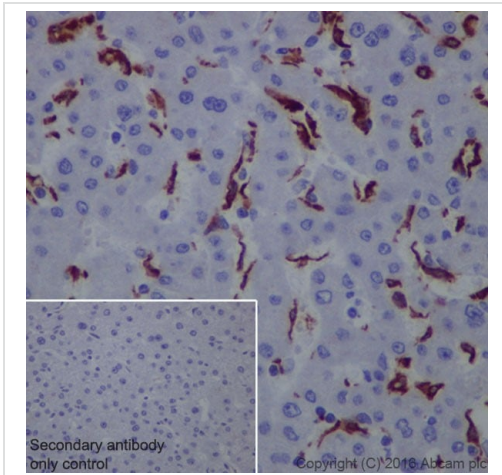


Immunocytochemistry/ Immunofluorescence - Anti-CD68 antibody [EPR20545]

Immunofluorescent analysis of 100% methanol-fixed U937 (human histiocytic lymphoma cell line) cells labeling CD68 with **ab213363** at 1/100 dilution followed by Goat Anti-Rabbit IgG H&L (Alexa Fluor® 488) (**ab150077**) secondary antibody at 1/1000 dilution (green). Confocal image showing cytoplasmic staining on U937 cells.

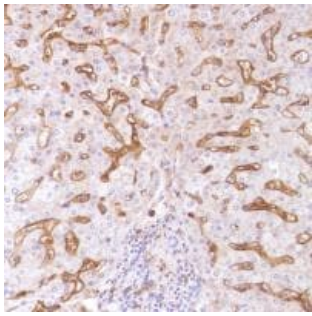
The nuclear counter stain is DAPI (blue). Tubulin is detected with Anti-alpha Tubulin antibody [DM1A] - Microtubule Marker (Alexa Fluor® 594) (**ab195889**) (red) at 1/200 dilution.

Secondary antibody only control: Used PBS instead of primary antibody, secondary antibody is Goat Anti-Rabbit IgG H&L (Alexa Fluor® 488) (**ab150077**) secondary antibody at 1/1000 dilution.



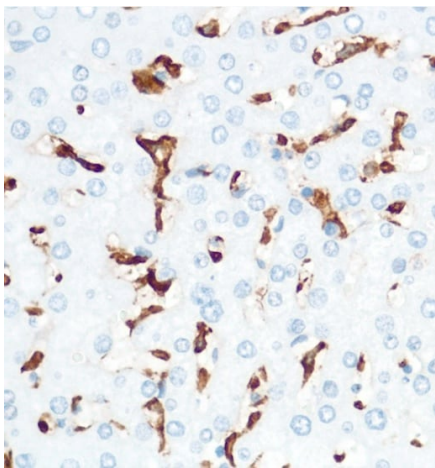
Immunohistochemistry (Formalin/PFA-fixed paraffin-embedded sections) - Anti-CD163 antibody [EPR19518]

Immunohistochemical analysis of paraffin-embedded human liver tissue labeling CD163 with **ab182422** at 1/500 dilution, followed by Goat Anti-Rabbit IgG H&L (HRP) (**ab97051**) at 1/500 dilution. Cytoplasm staining on Kupffer cells of human liver is observed. Counter stained with Hematoxylin. Secondary antibody only control: Used PBS instead of primary antibody, secondary antibody is **ab97051** at 1/500 dilution.



Immunohistochemical analysis of paraffin embedded Human liver tissue labeling CD14 with [ab183322](#) at 1/100.

Immunohistochemistry (Formalin/PFA-fixed paraffin-embedded sections) - Anti-CD14 antibody [SP192]



Immunohistochemical analysis of paraffin embedded human liver tissue labeling CD16 with [ab183354](#) at 1/100 dilution.

Immunohistochemistry (Formalin/PFA-fixed paraffin-embedded sections) - Anti-CD16 antibody [SP175]

### Why choose a recombinant antibody?



**Research with confidence**  
Consistent and reproducible results



**Long-term and scalable supply**  
Recombinant technology



**Success from the first experiment**  
Confirmed specificity



**Ethical standards compliant**  
Animal-free production

Macrophage Marker (CD11b, CD68, CD163, CD14, CD16) Antibody Panel - Human (ab254013)

**Please note:** All products are "FOR RESEARCH USE ONLY. NOT FOR USE IN DIAGNOSTIC PROCEDURES"

### Our Abpromise to you: Quality guaranteed and expert technical support

---

- Replacement or refund for products not performing as stated on the datasheet
- Valid for 12 months from date of delivery
- Response to your inquiry within 24 hours
- We provide support in Chinese, English, French, German, Japanese and Spanish
- Extensive multi-media technical resources to help you
- We investigate all quality concerns to ensure our products perform to the highest standards

If the product does not perform as described on this datasheet, we will offer a refund or replacement. For full details of the Abpromise, please visit <https://www.abcam.co.jp/abpromise> or contact our technical team.

### Terms and conditions

---

- Guarantee only valid for products bought direct from Abcam or one of our authorized distributors