

Embryonic Stem Cell Marker Panel (Human: Oct4, Nanog, Tra-1-60 (R), SOX2, SSEA4) ab109884

★★★★★ [1 Abreviews](#) [6 References](#) [画像数 5](#)

製品の概要

製品名 Embryonic Stem Cell Marker Panel (Human: Oct4, Nanog, Tra-1-60 (R), SOX2, SSEA4)

製品の概要 Embryonic Stem Cell Marker Panel (Human) ab109884 contains 50µg of Oct4 rabbit polyclonal, 50µg of Tra-1-60 (R) mouse monoclonal, 50µl of Nanog rabbit monoclonal antibody, 50µg of SOX2 rabbit polyclonal antibody and 50µl of SSEA4 mouse monoclonal antibodies.

The Human Embryonic Stem Cell Marker Panel is designed for the validation and characterization of cultured or newly derived human embryonic stem (ES) cell lines. The panel contains five antibodies to well known markers of human ES cells (Oct4, Nanog, SOX2, SSEA4 and Tra-1-60). Embryonic stem cells are isolated from the inner cell mass of the early blastocyst. They have two properties that make them unique. Firstly, under defined conditions they can self-renew indefinitely and secondly they are pluripotent, which means they can differentiate into all three germ layers (ectoderm, mesoderm and endoderm).

特記事項

Panel contains:

Oct4 rabbit polyclonal [ab19857](#)- 50µg

Tra-1-60 mouse monoclonal [ab16288](#)- 50µg

Nanog rabbit monoclonal antibody [ab109250](#)- 50µl

SOX2 rabbit polyclonal antibody [ab97959](#) - 50µg

SSEA4 mouse monoclonal [ab16287](#)- 50µl

[Explore our range of antibody sample panels](#) designed to provide you with a variety of trial-size antibodies in a convenient and cost-effective format.

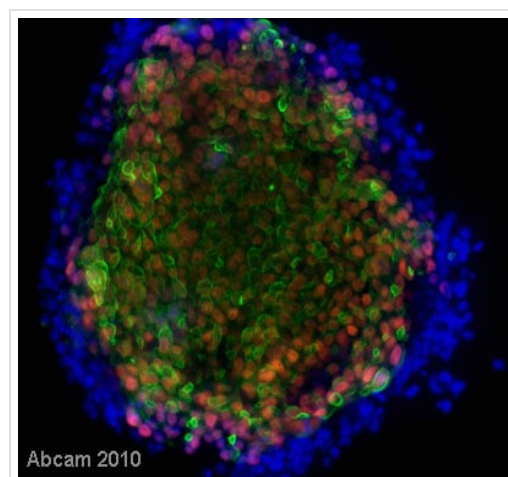
製品の特性

保存方法 Store at -20°C. Please refer to protocols.

内容	1 units
ab109250 - Anti-Nanog antibody - ChIP grade	1 x 50µl
ab19857 - Anti-Oct4 antibody - ChIP Grade	1 x 50µg

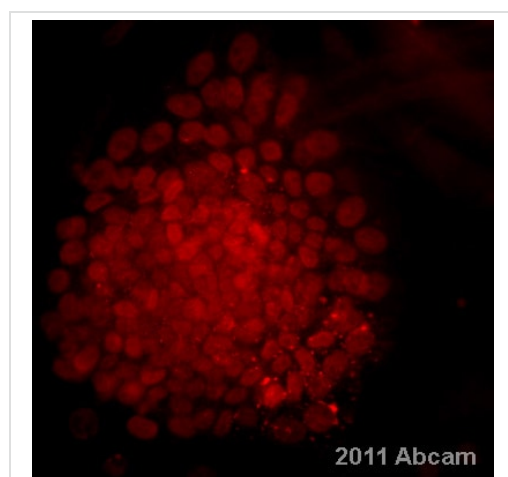
内容	1 units
<u>ab97959</u> - Anti-SOX2 antibody	1 x 50µg
<u>ab16287</u> - Anti-SSEA4 antibody [MC813]	1 x 50µl
<u>ab16288</u> - Anti-TRA-1-60 (R) antibody [TRA-1-60]	1 x 50µg

画像



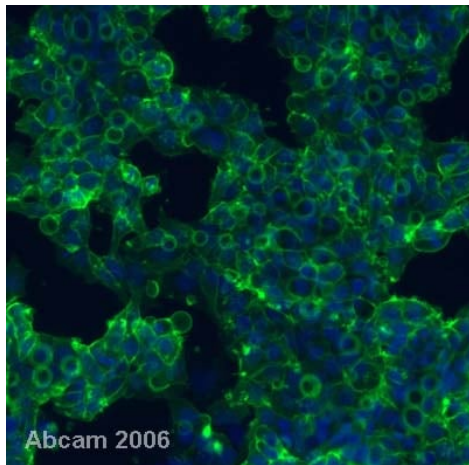
Immunocytochemistry/ Immunofluorescence -
Human Embryonic Stem Cell Marker Panel (Oct4,
Nanog, Tra-1-60, SOX2 and SSEA4) (ab109884)
This image is courtesy of an anonymous collaborator.

This image shows a colony of Human Embryonic Stem Cells stained with dapi (blue), anti-Oct4 antibody **ab19857** (red) and Tra-1-60 antibody **ab16288** (green). The nuclei of Oct4-positive undifferentiated hESCs stained bright red, whereas Tra-1-60 staining was seen at the cell membrane. These antibodies can be used as markers of undifferentiated Human Embryonic Stem Cells.



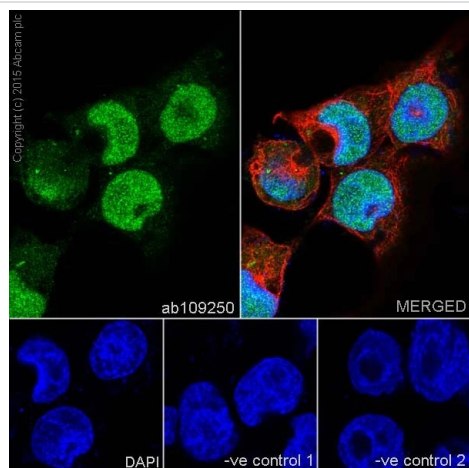
Immunocytochemistry/ Immunofluorescence -
Human Embryonic Stem Cell Marker Panel (Oct4,
Nanog, Tra-1-60, SOX2 and SSEA4) (ab109884)
This image is courtesy of an anonymous collaborator.

ICC/IF image of Sox2 (**ab97959**) stained Human Embryonic Stem Cells. The cells were paraformaldehyde fixed and then incubated in 1% serum / 0.01% triton / 0.1% BSA in PBS for 30min to permeabilize the cells and block non-specific protein-protein interactions. The cells were then incubated with the antibody (**ab97959**, 1/500 dilution) overnight at +4°C.



NTERA2 Human Embryonic Carcinoma cells were stained with SSEA4 antibody **ab16287**. As expected, staining localised to the cell surface (green). Nuclei are stained blue using Hoechst.

Immunocytochemistry/ Immunofluorescence -
Human Embryonic Stem Cell Marker Panel (Oct4,
Nanog, Tra-1-60, SOX2 and SSEA4) (ab109884)
This image is courtesy of an anonymous collaborator.



Immunocytochemistry/Immunofluorescence analysis of NCCIT(human pluripotent embryonal carcinoma) cells labelling Nanog with purified **ab109250** at 1/250. Cells were fixed with 4% paraformaldehyde and permeabilized with 0.1% Triton X-100. **ab150077**, an Alexa Fluor[®] 488-conjugated goat anti-rabbit IgG (1/500) was used as the secondary antibody. DAPI (blue) was used as the nuclear counterstain. **ab7291**, a mouse anti-tubulin (1/1000) and **ab150120**, an Alexa Fluor[®] 594-conjugated goat anti-mouse IgG (1/1000) were also used.

Control 1: primary antibody (1/100) and secondary antibody, **ab150120**, an Alexa Fluor[®] 594-conjugated goat anti-mouse IgG (1/500).

Control 2: **ab7291** (1/1000) and secondary antibody, **ab150077**, an Alexa Fluor[®] 488-conjugated goat anti-rabbit IgG (1/500).

Embryonic Stem Cell Marker Panel (Human: Oct4,
Nanog, Tra-1-60 (R), SOX2, SSEA4)

Why choose a recombinant antibody?



Research with confidence

Consistent and reproducible results



Long-term and scalable supply

Recombinant technology



Success from the first experiment

Confirmed specificity



Ethical standards compliant

Animal-free production

Embryonic Stem Cell Marker Panel (Human: Oct4, Nanog, Tra-1-60, SOX2, SSEA4) (ab109884)

Please note: All products are "FOR RESEARCH USE ONLY. NOT FOR USE IN DIAGNOSTIC PROCEDURES"

Our Abpromise to you: Quality guaranteed and expert technical support

- Replacement or refund for products not performing as stated on the datasheet
- Valid for 12 months from date of delivery
- Response to your inquiry within 24 hours
- We provide support in Chinese, English, French, German, Japanese and Spanish
- Extensive multi-media technical resources to help you
- We investigate all quality concerns to ensure our products perform to the highest standards

If the product does not perform as described on this datasheet, we will offer a refund or replacement. For full details of the Abpromise, please visit <https://www.abcam.co.jp/abpromise> or contact our technical team.

Terms and conditions

- Guarantee only valid for products bought direct from Abcam or one of our authorized distributors