

Human EGFR Phosphorylation Antibody Array - Membrane (17 Targets) ab134005

5 References [画像数 2](#)

要確認書

製品の概要

製品名	Human EGFR Phosphorylation Antibody Array - Membrane (17 Targets)
サンプルの種類	Tissue Extracts, Cell Lysate
アッセイタイプ	Semi-quantitative
種交差性	交差種: Human
製品の概要	ab134005 is for simultaneous detection of the relative levels of 17 different Phosphorylated Human EGF Receptors. Suitable for cell and tissue lysates only.

Targets: EGFR (Tyr845), EGFR (Tyr992), EGFR (Tyr1045), EGFR (Tyr1068), EGFR (Tyr1086), EGFR (Tyr1148), EGFR (Tyr1173), EGFR (Ser1046/1047), EGFR (Ser1070), ErbB2 (Tyr877), ErbB2 (Tyr1112), ErbB2 (Tyr 1221/1222), ErbB2 (Tyr1248), ErbB2 (Thr686), ErbB2 (Ser1113), ErbB3 (Tyr1289), ErbB4 (Tyr1284)

[Learn more about membrane antibody arrays](#)

特記事項

Abcam has not and does not intend to apply for the REACH Authorisation of customers' uses of products that contain European Authorisation list (Annex XIV) substances.
It is the responsibility of our customers to check the necessity of application of REACH Authorisation, and any other relevant authorisations, for their intended uses.

アプリケーション

適用あり: Multiplex Protein Detection

製品の特性

保存方法

Store at -20°C. Please refer to protocols.

内容	1 x 4 Membranes	1 x 8 Membranes	1 x 2 Membranes
1,000X HRP-Conjugated Streptavidin	1 x 18µl	1 x 18µl	1 x 18µl

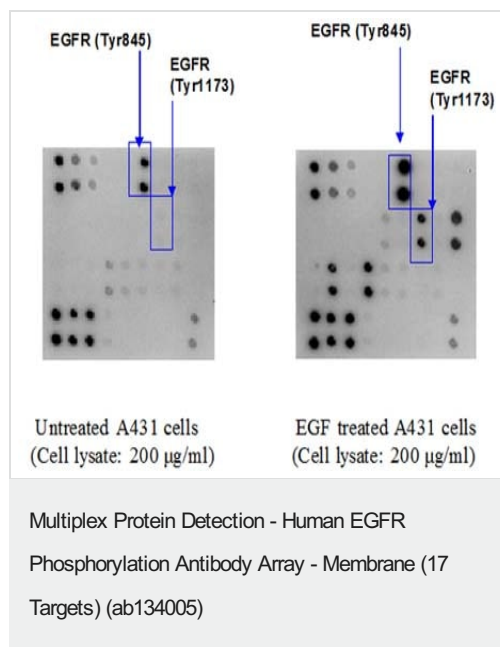
内容	1 x 4 Membranes	1 x 8 Membranes	1 x 2 Membranes
100X Phosphatase Inhibitor Cocktail Set I Concentrate	1 vial	2 vials	1 vial
1X Blocking Buffer	1 x 25ml	2 x 25ml	1 x 25ml
20X Wash Buffer I	1 x 30ml	1 x 30ml	1 x 30ml
20X Wash Buffer II	1 x 30ml	1 x 30ml	1 x 30ml
2X Cell Lysis Buffer	1 x 5ml	1 x 5ml	1 x 5ml
8-Well Incubation Tray (with Lid)	1 unit	1 unit	1 unit
Cocktail of Biotin-Conjugated Anti-EGFR	2 vials	4 vials	1 vial
Detection Buffer C	1 x 1.5ml	1 x 2.5ml	1 x 1.5ml
Detection Buffer D	1 x 1.5ml	1 x 2.5ml	1 x 1.5ml
EGFR Phosphorylation Antibody Array Membranes	4 units	8 units	2 units
Phosphatase Inhibitor Cocktail Set II	1 vial	2 vials	1 vial
Protease Inhibitor Cocktail	1 vial	2 vials	1 vial

アプリケーション

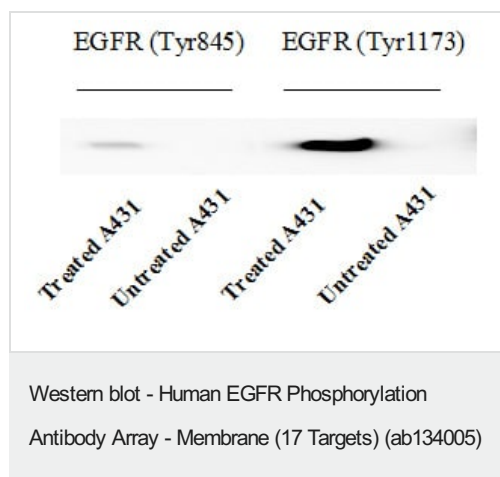
The Abpromise guarantee **Abpromise保証は、次のテスト済みアプリケーションにおけるab134005の使用に適用されます**
 アプリケーションノートには、推奨の開始希釈率がありますが、適切な希釈率につきましてはご検討ください。

アプリケーション	Abreviews	特記事項
Multiplex Protein Detection		Use at an assay dependent concentration.

画像



Human epidermoid carcinoma cell line, A431 cells that were 80-90% confluent were serum starved overnight, then exposed to 100 ng/ml EGF for 20 minutes at 37°C. Control cells were serum starved without the subsequent stimulation with EGF. Cell lysates were prepared according to the protocol. To use ab134005 Human EGFR Phosphorylation Antibody Array - Membrane, treated or untreated cell lysate was added into antibody array membrane. The antibody array membranes were washed and cocktail of biotinylated anti-EGFR was used to detect phosphorylated proteins on activated receptors. After incubation with HRP-Conjugated Streptavidin, the signals were visualized by chemiluminescence.



Western blot analysis of extracts from 100 ng/ml hEGF treated A431 cells or untreated A431 cells. Phospho-EGFR (Tyr845) or Phospho-EGFR (Tyr1173) antibodies were used in this assay.

Please note: All products are "FOR RESEARCH USE ONLY. NOT FOR USE IN DIAGNOSTIC PROCEDURES"

Our Abpromise to you: Quality guaranteed and expert technical support

- Replacement or refund for products not performing as stated on the datasheet
- Valid for 12 months from date of delivery
- Response to your inquiry within 24 hours
- We provide support in Chinese, English, French, German, Japanese and Spanish
- Extensive multi-media technical resources to help you
- We investigate all quality concerns to ensure our products perform to the highest standards

If the product does not perform as described on this datasheet, we will offer a refund or replacement. For full details of the Abpromise, please visit <https://www.abcam.co.jp/abpromise> or contact our technical team.

Terms and conditions

- Guarantee only valid for products bought direct from Abcam or one of our authorized distributors