

# Human Atherosclerosis Antibody Array - Membrane (20 targets) ab169803

画像数 1

### 製品の概要

製品名	Human Atherosclerosis Antibody Array - Membrane (20 targets)
サンプルの種類	Cell culture supernatant, Saliva, Milk, Urine, Serum, Plasma, Cell culture extracts, Other biological fluids, Whole Blood, Tissue Extracts, Cell Lysate, Cell culture media
アッセイタイプ	Semi-quantitative
種交差性	交差種: Human
製品の概要	ab169803 detects 20 Human Atherosclerotic Factors in 4 or 8 samples. Suitable for all liquid sample types.

**Targets:** Eotaxin-1, G-CSF, GDNF, GM-CSF, ICAM-1, IFN-gamma, IL-1 alpha, IL-1 beta, IL-1 sRI, IL-1 sRII, MCP-1, M-CSF, TGF beta 1, TGF beta 2, TGF beta 3, TNF alpha, TNF beta, MIP-3 alpha, PDGF-BB, RANTES

**[Learn more about membrane antibody arrays](#)**

### 特記事項

If you are interested in this cytokine array, arrays **[ab169817](#)**, **[ab133998](#)** and **[ab169809](#)** may also be of interest. A list of human antibody membrane arrays is available **[here](#)**.

Abcam has not and does not intend to apply for the REACH Authorisation of customers' uses of products that contain European Authorisation list (Annex XIV) substances.

It is the responsibility of our customers to check the necessity of application of REACH Authorisation, and any other relevant authorisations, for their intended uses.

### アプリケーション

**適用あり:** Multiplex Protein Detection

### 製品の特性

**保存方法** Store at -20°C. Please refer to protocols.

内容	1 x 4 Membranes	1 x 8 Membranes
1,000X HRP-Conjugated Streptavidin	1 x 50µl	1 x 50µl

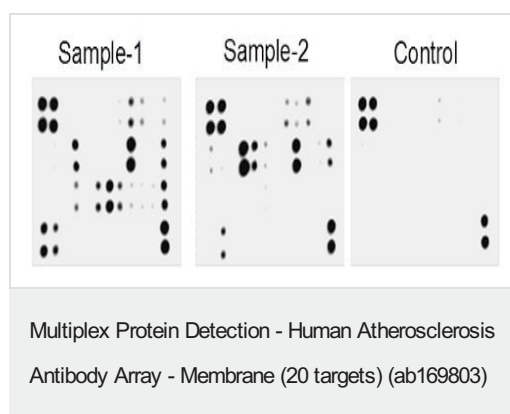
内容	1 x 4 Membranes	1 x 8 Membranes
1X Blocking Buffer	1 x 25ml	2 x 25ml
2000X Biotin-Conjugated Anti Cytokines	2 vials	4 vials
20X Wash Buffer I	1 x 10ml	1 x 20ml
20X Wash Buffer II	1 x 10ml	1 x 20ml
2X Cell Lysis Buffer	1 x 10ml	1 x 16ml
8-Well Incubation Tray (with Lid)	1 unit	1 unit
Atherosclerosis Antibody Array Membranes	4 units	8 units
Detection Buffer C	1 x 1.5ml	1 x 2.5ml
Detection Buffer D	1 x 1.5ml	1 x 2.5ml

## アプリケーション

**The Abpromise guarantee** **Abpromise保証は、次のテスト済みアプリケーションにおけるab169803の使用に適用されます**  
 アプリケーションノートには、推奨の開始希釈率がありますが、適切な希釈率につきましてはご検討ください。

アプリケーション	Abreviews	特記事項
<b>Multiplex Protein Detection</b>		Use at an assay dependent concentration.

## 画像



Typical results obtained with Abcam Membrane Antibody Arrays.  
 Image above presents typical images obtained with Abcam Human Cytokine Membrane Antibody Array. These membranes were probed with conditioned media from two different cell lines. Membranes were exposed to film at RT for 1 min.

**Please note:** All products are "FOR RESEARCH USE ONLY. NOT FOR USE IN DIAGNOSTIC PROCEDURES"

**Our Abpromise to you: Quality guaranteed and expert technical support**

- Replacement or refund for products not performing as stated on the datasheet
- Valid for 12 months from date of delivery
- Response to your inquiry within 24 hours
- We provide support in Chinese, English, French, German, Japanese and Spanish
- Extensive multi-media technical resources to help you
- We investigate all quality concerns to ensure our products perform to the highest standards

If the product does not perform as described on this datasheet, we will offer a refund or replacement. For full details of the Abpromise, please visit <https://www.abcam.co.jp/abpromise> or contact our technical team.

#### **Terms and conditions**

---

- Guarantee only valid for products bought direct from Abcam or one of our authorized distributors