

Product datasheet

Anti-p57 Kip2 (phospho T310) antibody ab61064

画像数 2

製品の概要

製品名	Anti-p57 Kip2 (phospho T310) antibody
製品の詳細	Rabbit polyclonal to p57 Kip2 (phospho T310)
由来種	Rabbit
特異性	Ab61064 detects endogenous levels of p57 Kip2 only when phosphorylated at threonine 310.
アプリケーション	適用あり: WB, ELISA, IHC-P
種交差性	交差種: Human 交差が予測される動物種: Mouse ▲
免疫原	Synthesized phosphopeptide derived from human p57 Kip2 around the phosphorylation site of threonine 310(E-Q-T ^P -P-R).
ポジティブ・コントロール	Human placenta tissue

製品の特性

製品の状態	Liquid
保存方法	Shipped at 4°C. Upon delivery aliquot and store at -20°C. Avoid freeze / thaw cycles.
バッファー	Preservative: 0.02% Sodium Azide Constituents: 50% Glycerol, PBS (without Mg ²⁺ and Ca ²⁺), 150mM Sodium chloride, pH 7.4
精製度	Immunogen affinity purified
特記事項(精製)	ab61064 was affinity-purified from rabbit antiserum by affinity chromatography using epitope-specific phosphopeptide. The antibody against non-phosphopeptide was removed by chromatography using non-phosphopeptide corresponding to the phosphorylation site.
ポリ/モノ	ポリクローナル
アイソタイプ	IgG

アプリケーション

Our [Abpromise guarantee](#) covers the use of **ab61064** in the following tested applications.

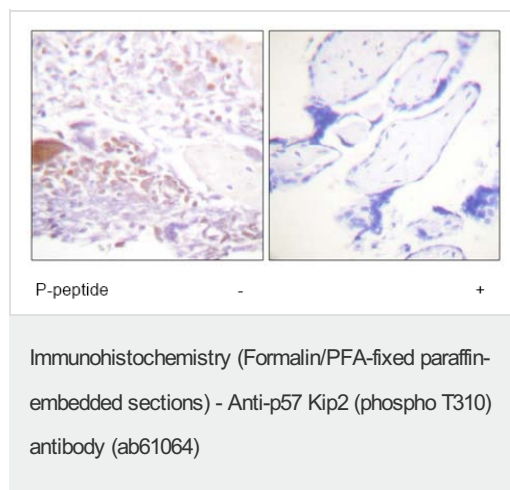
The application notes include recommended starting dilutions; optimal dilutions/concentrations should be determined by the end user.

アプリケーション	Abreviews	特記事項
WB		1/500 - 1/1000. Predicted molecular weight: 32 kDa.
ELISA		1/5000.
IHC-P		1/50 - 1/100.

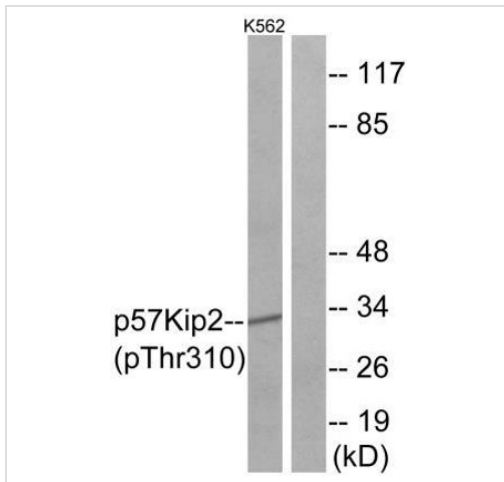
ターゲット情報

機能	Potent tight-binding inhibitor of several G1 cyclin/CDK complexes (cyclin E-CDK2, cyclin D2-CDK4, and cyclin A-CDK2) and, to lesser extent, of the mitotic cyclin B-CDC2. Negative regulator of cell proliferation. May play a role in maintenance of the non-proliferative state throughout life.
組織特異性	Expressed in the heart, brain, lung, skeletal muscle, kidney, pancreas and testis. High levels are seen in the placenta while low levels are seen in the liver.
関連疾患	Defects in CDKN1C are a cause of Beckwith-Wiedemann syndrome (BWS) [MIM:130650]. BWS is a genetically heterogeneous disorder characterized by anterior abdominal wall defects including exomphalos (omphalocele), pre- and postnatal overgrowth, and macroglossia. Additional less frequent complications include specific developmental defects and a predisposition to embryonal tumors. Note=Defects in CDKN1C are involved in tumor formation.
配列類似性	Belongs to the CDI family.
細胞内局在	Nucleus.

画像



Immunohistochemistry analysis of paraffin-embedded human placenta tissue using ab61064 at 1/50-1/100 dilution with or without addition of Phospho-peptide.



Western Blot analysis of K562 cell lysates labeling p57 Kip2 (phospho T310) with ab61064 at 0.01U/ml for 15 minutes. The lane on the right is blocked with the phospho peptide.

Western blot - Anti-p57 Kip2 (phospho T310) antibody (ab61064)

Please note: All products are "FOR RESEARCH USE ONLY AND ARE NOT INTENDED FOR DIAGNOSTIC OR THERAPEUTIC USE"

Our Abpromise to you: Quality guaranteed and expert technical support

- Replacement or refund for products not performing as stated on the datasheet
- Valid for 12 months from date of delivery
- Response to your inquiry within 24 hours
- We provide support in Chinese, English, French, German, Japanese and Spanish
- Extensive multi-media technical resources to help you
- We investigate all quality concerns to ensure our products perform to the highest standards

If the product does not perform as described on this datasheet, we will offer a refund or replacement. For full details of the Abpromise, please visit <https://www.abcam.co.jp/abpromise> or contact our technical team.

Terms and conditions

- Guarantee only valid for products bought direct from Abcam or one of our authorized distributors