

## Product datasheet

# Anti-HLA Class I antibody [MEM-123] ab2217

★★★★★ 2 Abreviews [画像数 3](#)

### 製品の概要

<b>製品名</b>	Anti-HLA Class I antibody [MEM-123]
<b>製品の詳細</b>	Mouse monoclonal [MEM-123] to HLA Class I
<b>由来種</b>	Mouse
<b>特異性</b>	This antibody reacts with all human classical MHC Class I molecules in native cell-surface forms as well as with human HLA-G cDNA transfected cells. This antibody completely blocks the binding of pan MHC antibody ( <a href="#">ab7855</a> ) but does not block binding of anti-HLA-G( <a href="#">ab7758/7904</a> ) to surface-expressed HLA-G.
<b>アプリケーション</b>	<b>適用あり:</b> ICC/IF, Flow Cyt
<b>種交差性</b>	<b>交差種:</b> Human
<b>免疫原</b>	Tissue, cells or virus corresponding to HLA Class I. COS-7 cells transfected with human CD48
<b>特記事項</b>	<p>The Life Science industry has been in the grips of a reproducibility crisis for a number of years. Abcam is leading the way in addressing this with our range of recombinant monoclonal antibodies and knockout edited cell lines for gold-standard validation. Please check that this product meets your needs before purchasing.</p> <p>If you have any questions, special requirements or concerns, please send us an inquiry and/or contact our Support team ahead of purchase. Recommended alternatives for this product can be found below, along with publications, customer reviews and Q&amp;As</p>

### 製品の特性

<b>製品の状態</b>	Liquid
<b>保存方法</b>	Shipped at 4°C. Store at +4°C short term (1-2 weeks). Upon delivery aliquot. Store at -20°C or -80°C. Avoid freeze / thaw cycle.
<b>バッファー</b>	pH: 7.40 Preservative: 0.097% Sodium azide Constituent: PBS
<b>精製度</b>	Protein A purified
<b>ポリ/モノ</b>	モノクローナル
<b>クローン名</b>	MEM-123
<b>ミエローマ</b>	unknown

アイソタイプ IgG3  
軽鎖の種類 unknown

## アプリケーション

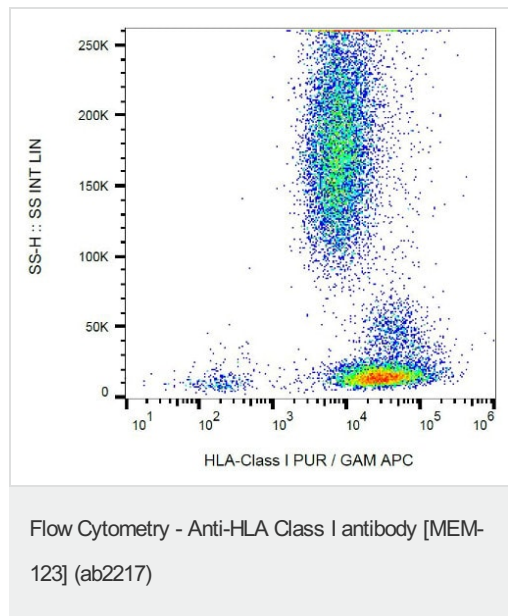
**The Abpromise guarantee** [Abpromise保証は](#)、次のテスト済みアプリケーションにおけるab2217の使用に適用されます  
アプリケーションノートには、推奨の開始希釈率がありますが、適切な希釈率につきましてはご検討ください。

アプリケーション	Abreviews	特記事項
ICC/IF		Use at an assay dependent concentration.
Flow Cyt		Use a concentration of 4 µg/ml. <a href="#">ab91537</a> - Mouse monoclonal IgG3, is suitable for use as an isotype control with this antibody.

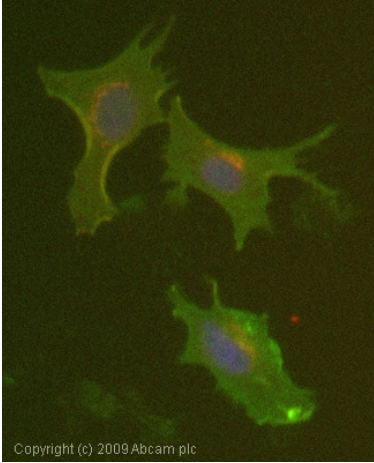
## ターゲット情報

**関連性** HLA Class I is involved in the presentation of foreign antigens to the immune system.  
**細胞内局在** Plasma membrane

## 画像



Flow Cytometry analysis of human peripheral blood cells labeling HLA Class I with Anti-HLA Class I antibody [MEM-123] (ab2217).



Copyright (c) 2009 Abcam plc

Immunocytochemistry/ Immunofluorescence - Anti-HLA Class I antibody [MEM-123] (ab2217)

ICC/IF image of ab2217 stained HeLa cells. The cells were 4% formaldehyde fixed (10 min) and then incubated in 1%BSA / 10% normal goat serum / 0.3M glycine in 0.1% PBS-Tween for 1h to permeabilise the cells and block non-specific protein-protein interactions. The cells were then incubated with the antibody (ab2217, 1µg/ml) overnight at +4°C. The secondary antibody (green) was Alexa Fluor® 488 goat anti-mouse IgG (H+L) used at a 1/1000 dilution for 1h. Alexa Fluor® 594 WGA was used to label plasma membranes (red) at a 1/200 dilution for 1h. DAPI was used to stain the cell nuclei (blue) at a concentration of 1.43µM.

Flow Cytometry - Anti-HLA Class I antibody [MEM-123] (ab2217)

Overlay histogram showing Jurkat cells stained with ab2217 (red line). The cells were fixed with 4% paraformaldehyde (10 min) and then permeabilized with 0.1% PBS-Tween for 20 min. The cells were then incubated in 1x PBS / 10% normal goat serum / 0.3M glycine to block non-specific protein-protein interactions followed by the antibody (ab2217, 0.5µg/1x10<sup>6</sup> cells) for 30 min at 22°C. The secondary antibody used was DyLight® 488 goat anti-mouse IgG (H+L) (ab96879) at 1/500 dilution for 30 min at 22°C. Isotype control antibody (black line) was mouse IgG3 [MG3-35] (ab18394, 1µg/1x10<sup>6</sup> cells) used under the same conditions. Acquisition of >5,000 events was performed. This antibody gave a positive signal in Jurkat cells fixed with 80% methanol (5 min)/permeabilized with 0.1% PBS-Tween for 20 min used under the same conditions.

**Please note:** All products are "FOR RESEARCH USE ONLY. NOT FOR USE IN DIAGNOSTIC PROCEDURES"

### Our Abpromise to you: Quality guaranteed and expert technical support

- Replacement or refund for products not performing as stated on the datasheet
- Valid for 12 months from date of delivery
- Response to your inquiry within 24 hours

- We provide support in Chinese, English, French, German, Japanese and Spanish
- Extensive multi-media technical resources to help you
- We investigate all quality concerns to ensure our products perform to the highest standards

If the product does not perform as described on this datasheet, we will offer a refund or replacement. For full details of the Abpromise, please visit <https://www.abcam.co.jp/abpromise> or contact our technical team.

### **Terms and conditions**

---

- Guarantee only valid for products bought direct from Abcam or one of our authorized distributors