

Product datasheet

Anti-delta 1 Catenin (phospho Y228) antibody [E205] ab32403

リコンビナント RabMAb®

3 References 画像数 2

製品の概要

製品名	Anti-delta 1 Catenin (phospho Y228) antibody [E205]
製品の詳細	Rabbit monoclonal [E205] to delta 1 Catenin (phospho Y228)
由来種	Rabbit
特異性	This antibody only detects delta 1 Catenin phosphorylated on Tyrosine 228.
アプリケーション	<b>適用あり:</b> WB, IHC-P, ICC, IP <b>適用なし:</b> Flow Cyt
種交差性	<b>交差種:</b> Mouse, Rat, Human
免疫原	A synthetic phospho peptide corresponding to residues surrounding Tyr 228 of human delta 1 Catenin.
ポジティブ・コントロール	WB: HeLa cell lysate. IHC-P: Breast carcinoma.
特記事項	

Our RabMAb® technology is a patented hybridoma-based technology for making rabbit monoclonal antibodies. For details on our patents, please refer to [RabMAb® patents](#)  
This product is a recombinant rabbit monoclonal antibody.

製品の特性

製品の状態	Liquid
保存方法	Shipped at 4°C. Upon delivery aliquot and store at -20°C. Avoid freeze / thaw cycles.
バッファー	PBS 49%, Sodium azide 0.01%, Glycerol 50%, BSA 0.05%
ポリ/モノ	モノクローナル
クローン名	E205
アイソタイプ	IgG

アプリケーション

Our [Abpromise guarantee](#) covers the use of **ab32403** in the following tested applications.

The application notes include recommended starting dilutions; optimal dilutions/concentrations should be determined by the end user.

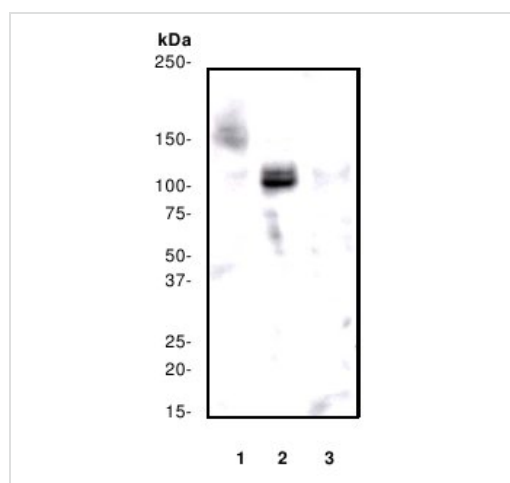
アプリケーション	Abreviews	特記事項
WB		1/5000 - 1/20000. Detects a band of approximately 115 kDa (predicted molecular weight: 108 kDa).
IHC-P		1/50.
ICC		1/100.
IP		1/100.

**追加情報** Is unsuitable for Flow Cyt.

### ターゲット情報

<b>機能</b>	Binds to and inhibits the transcriptional repressor ZBTB33, which may lead to activation of target genes of the Wnt signaling pathway (By similarity). May associate with and regulate the cell adhesion properties of both C- and E-cadherins. Implicated both in cell transformation by SRC and in ligand-induced receptor signaling through the EGF, PDGF, CSF-1 and ERBB2 receptors. Promotes GLIS2 C-terminal cleavage.
<b>組織特異性</b>	Expressed in vascular endothelium.
<b>配列類似性</b>	Belongs to the beta-catenin family. Contains 10 ARM repeats.
<b>ドメイン</b>	A possible nuclear localization signal exists in all isoforms where Asp-626--631-Arg are deleted.
<b>翻訳後修飾</b>	Phosphorylated by protein-tyrosine kinases. Dephosphorylated by PTPRJ.
<b>細胞内局在</b>	Cytoplasm. Nucleus. Cell membrane. Interaction with GLIS2 promotes nuclear translocation (By similarity). NANOS1 induces its translocation from sites of cell-cell contact to the cytoplasm.

### 画像



Western blot - Anti-delta 1 Catenin (phospho Y228) antibody [E205] (ab32403)

**All lanes** : Anti-delta 1 Catenin (phospho Y228) antibody [E205] (ab32403)

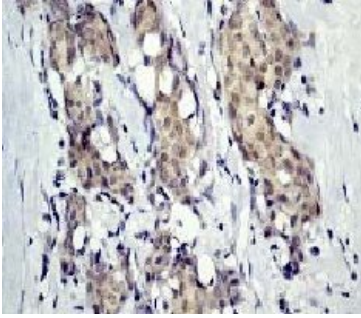
**Lane 1** : HeLa cell lysate, untreated.

**Lane 2** : HeLa cell lysate, treated with Pervanadate.

**Lane 3** : HeLa cell lysate, treated with Phosphatase.

**Predicted band size:** 108 kDa

**Observed band size:** 115 kDa



Ab32403, at a 1/50 dilution, staining delta 1 Catenin in paraffin embedded breast carcinoma tissue sections by Immunohistochemistry.

Immunohistochemistry (Formalin/PFA-fixed paraffin-embedded sections) - Anti-delta 1 Catenin (phospho Y228) antibody [E205] (ab32403)

**Please note:** All products are "FOR RESEARCH USE ONLY AND ARE NOT INTENDED FOR DIAGNOSTIC OR THERAPEUTIC USE"

### Our Abpromise to you: Quality guaranteed and expert technical support

- Replacement or refund for products not performing as stated on the datasheet
- Valid for 12 months from date of delivery
- Response to your inquiry within 24 hours
- We provide support in Chinese, English, French, German, Japanese and Spanish
- Extensive multi-media technical resources to help you
- We investigate all quality concerns to ensure our products perform to the highest standards

If the product does not perform as described on this datasheet, we will offer a refund or replacement. For full details of the Abpromise, please visit <https://www.abcam.co.jp/abpromise> or contact our technical team.

### Terms and conditions

- Guarantee only valid for products bought direct from Abcam or one of our authorized distributors