


Product datasheet

Anti-delta 1 Catenin antibody ab74124

画像数 2

製品の概要

製品名	Anti-delta 1 Catenin antibody
製品の詳細	Rabbit polyclonal to delta 1 Catenin
由来種	Rabbit
アプリケーション	適用あり: WB, ELISA, IHC-P
種交差性	交差種: Human 交差が予測される動物種: Mouse, Rat 
免疫原	Synthesized non phosphopeptide derived from human delta 1 Catenin around the phosphorylation site of tyrosine 228 (D-N-Y ^P -G-S).
ポジティブ・コントロール	Extracts from HuvEc cells, human brain tissue.

製品の特性

製品の状態	Liquid
保存方法	Shipped at 4°C. Upon delivery aliquot and store at -20°C. Avoid freeze / thaw cycles.
バッファー	Preservative: 0.02% Sodium Azide Constituents: 50% Glycerol, PBS (without Mg ²⁺ and Ca ²⁺), 150mM Sodium chloride, pH 7.4
精製度	Immunogen affinity purified
ポリ/モノ	ポリクローナル
アイソタイプ	IgG

アプリケーション

Our [Abpromise guarantee](#) covers the use of **ab74124** in the following tested applications.

The application notes include recommended starting dilutions; optimal dilutions/concentrations should be determined by the end user.

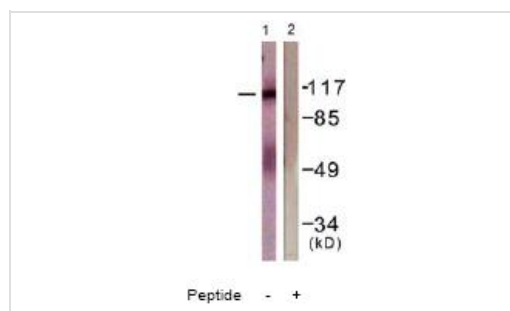
アプリケーション	Abreviews	特記事項
WB		1/500 - 1/1000. Detects a band of approximately 108 kDa (predicted molecular weight: 108 kDa).
ELISA		1/5000.

アプリケーション	Abreviews	特記事項
IHC-P		1/50 - 1/100.

ターゲット情報

機能	Binds to and inhibits the transcriptional repressor ZBTB33, which may lead to activation of target genes of the Wnt signaling pathway (By similarity). May associate with and regulate the cell adhesion properties of both C- and E-cadherins. Implicated both in cell transformation by SRC and in ligand-induced receptor signaling through the EGF, PDGF, CSF-1 and ERBB2 receptors. Promotes GLIS2 C-terminal cleavage.
組織特異性	Expressed in vascular endothelium.
配列類似性	Belongs to the beta-catenin family. Contains 10 ARM repeats.
ドメイン	A possible nuclear localization signal exists in all isoforms where Asp-626--631-Arg are deleted.
翻訳後修飾	Phosphorylated by protein-tyrosine kinases. Dephosphorylated by PTPRJ.
細胞内局在	Cytoplasm. Nucleus. Cell membrane. Interaction with GLIS2 promotes nuclear translocation (By similarity). NANOS1 induces its translocation from sites of cell-cell contact to the cytoplasm.

画像



Western blot - Anti-delta 1 Catenin antibody (ab74124)

All lanes : Anti-delta 1 Catenin antibody (ab74124) at 1/500 dilution

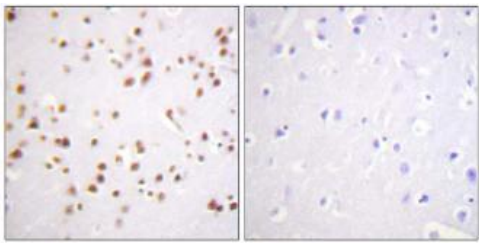
Lane 1 : Extracts from HuvEc cells

Lane 2 : Extracts from HuvEc cells, plus immunising peptide at 5 µg

Lysates/proteins at 5 µg per lane.

Predicted band size: 108 kDa

Observed band size: 108 kDa



Peptide

-

+

Immunohistochemistry (Formalin/PFA-fixed paraffin-embedded sections) - Anti-delta 1 Catenin antibody (ab74124)

ab74124, at a 1/50 dilution, staining delta 1 Catenin in paraffin embedded human brain tissue by Immunohistochemistry, in the absence (left image) or presence (right image) of the immunising peptide.

Please note: All products are "FOR RESEARCH USE ONLY AND ARE NOT INTENDED FOR DIAGNOSTIC OR THERAPEUTIC USE"

Our Abpromise to you: Quality guaranteed and expert technical support

- Replacement or refund for products not performing as stated on the datasheet
- Valid for 12 months from date of delivery
- Response to your inquiry within 24 hours
- We provide support in Chinese, English, French, German, Japanese and Spanish
- Extensive multi-media technical resources to help you
- We investigate all quality concerns to ensure our products perform to the highest standards

If the product does not perform as described on this datasheet, we will offer a refund or replacement. For full details of the Abpromise, please visit <https://www.abcam.co.jp/abpromise> or contact our technical team.

Terms and conditions

- Guarantee only valid for products bought direct from Abcam or one of our authorized distributors