

## Product datasheet

# Anti-Alpha-synuclein antibody ab6162

★★★★★ 5 Abreviews 25 References 画像数 1

### 製品の概要

製品名	Anti-Alpha-synuclein antibody
製品の詳細	Sheep polyclonal to Alpha-synuclein
由来種	Sheep
特異性	Human and rat alpha synuclein. Cross reactivity: This antibody is known to react with human, mouse, rat and other rodents. Cross reactivity with other species has not yet been tested.
アプリケーション	<b>適用あり:</b> WB <b>適用なし:</b> Flow Cyt or ICC/IF
種交差性	<b>交差種:</b> Mouse, Human
免疫原	Synthetic peptide corresponding to Human Alpha-synuclein aa 116-131. Synthetic peptide of human synuclein (116-131) coupled to diphtheria toxoid with cysteine residue attached to N-ter of peptide. Conjugate cross-linked by maleimidocaproyl-N-hydroxy succinimide (MSC). Sequence: C-MPVDPDNEAYEMPSEE

 [Run BLAST with](#)

 [Run BLAST with](#)

### 特記事項

The Life Science industry has been in the grips of a reproducibility crisis for a number of years. Abcam is leading the way in addressing this with our range of recombinant monoclonal antibodies and knockout edited cell lines for gold-standard validation. Please check that this product meets your needs before purchasing.

If you have any questions, special requirements or concerns, please send us an inquiry and/or contact our Support team ahead of purchase. Recommended alternatives for this product can be found below, along with publications, customer reviews and Q&As

### 製品の特性

製品の状態	Liquid
保存方法	Shipped at 4°C. Store at +4°C short term (1-2 weeks). Add glycerol to a final volume of 50% for extra stability and aliquot. Store at -20°C or -80°C. Avoid freeze / thaw cycle.
バッファー	pH: 7
精製度	Immunogen affinity purified
ポリ/モノ	ポリクローナル
アイソタイプ	IgG

## アプリケーション

**The Abpromise guarantee**      **Abpromise保証は、次のテスト済みアプリケーションにおけるab6162の使用に適用されます**  
アプリケーションノートには、推奨の開始希釈率がありますが、適切な希釈率につきましてはご検討ください。

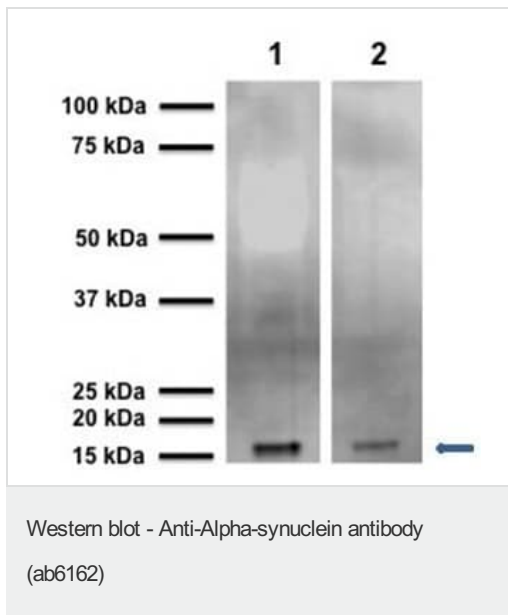
アプリケーション	Abreviews	特記事項
WB	★★★★☆ (1)	Use a concentration of 0.5 µg/ml.

**追加情報**      Is unsuitable for Flow Cyt or ICC/IF.

## ターゲット情報

<b>機能</b>	May be involved in the regulation of dopamine release and transport. Induces fibrillization of microtubule-associated protein tau. Reduces neuronal responsiveness to various apoptotic stimuli, leading to a decreased caspase-3 activation.
<b>組織特異性</b>	Expressed principally in brain but is also expressed in low concentrations in all tissues examined except in liver. Concentrated in presynaptic nerve terminals.
<b>関連疾患</b>	Genetic alterations of SNCA resulting in aberrant polymerization into fibrils, are associated with several neurodegenerative diseases (synucleinopathies). SNCA fibrillar aggregates represent the major non A-beta component of Alzheimer disease amyloid plaque, and a major component of Lewy body inclusions. They are also found within Lewy body (LB)-like intraneuronal inclusions, glial inclusions and axonal spheroids in neurodegeneration with brain iron accumulation type 1. Parkinson disease 1 Parkinson disease 4 Dementia Lewy body
<b>配列類似性</b>	Belongs to the synuclein family.
<b>ドメイン</b>	The 'non A-beta component of Alzheimer disease amyloid plaque' domain (NAC domain) is involved in fibrils formation. The middle hydrophobic region forms the core of the filaments. The C-terminus may regulate aggregation and determine the diameter of the filaments.
<b>翻訳後修飾</b>	Phosphorylated, predominantly on serine residues. Phosphorylation by CK1 appears to occur on residues distinct from the residue phosphorylated by other kinases. Phosphorylation of Ser-129 is selective and extensive in synucleinopathy lesions. In vitro, phosphorylation at Ser-129 promoted insoluble fibril formation. Phosphorylated on Tyr-125 by a PTK2B-dependent pathway upon osmotic stress. Hallmark lesions of neurodegenerative synucleinopathies contain alpha-synuclein that is modified by nitration of tyrosine residues and possibly by dityrosine cross-linking to generated stable oligomers. Ubiquitinated. The predominant conjugate is the diubiquitinated form. Acetylation at Met-1 seems to be important for proper folding and native oligomeric structure.
<b>細胞内局在</b>	Cytoplasm, cytosol. Membrane. Nucleus. Cell junction, synapse. Secreted. Membrane-bound in dopaminergic neurons.

## 画像



**All lanes** : Anti-Alpha-synuclein antibody (ab6162) at 1 µg/ml

**Lane 1** : Recombinant Human  $\alpha$ -synuclein at 0.1 µg

**Lane 2** : Mouse brain lysate at 30 µg

**Secondary**

**All lanes** : anti-sheep HRP at 1/6000 dilution

**Please note:** All products are "FOR RESEARCH USE ONLY. NOT FOR USE IN DIAGNOSTIC PROCEDURES"

### Our Abpromise to you: Quality guaranteed and expert technical support

- Replacement or refund for products not performing as stated on the datasheet
- Valid for 12 months from date of delivery
- Response to your inquiry within 24 hours
- We provide support in Chinese, English, French, German, Japanese and Spanish
- Extensive multi-media technical resources to help you
- We investigate all quality concerns to ensure our products perform to the highest standards

If the product does not perform as described on this datasheet, we will offer a refund or replacement. For full details of the Abpromise, please visit <https://www.abcam.co.jp/abpromise> or contact our technical team.

### Terms and conditions

- Guarantee only valid for products bought direct from Abcam or one of our authorized distributors