


## Product datasheet

# Anti-alpha smooth muscle Actin antibody ab15734

★★★★☆ 10 Abreviews 21 References 画像数 5

### 製品の概要

製品名	Anti-alpha smooth muscle Actin antibody
製品の詳細	Rabbit polyclonal to alpha smooth muscle Actin
由来種	Rabbit
アプリケーション	<b>適用あり:</b> IHC (PFA fixed), IHC-FoFr, IHC-P, IHC-Fr, WB
種交差性	<b>交差種:</b> Mouse, Rat, Horse, Human, Zebrafish <b>交差が予測される動物種:</b> Rabbit, Chicken, Cow 
免疫原	Synthetic peptide derived from within residues 1 - 100 of Human alpha smooth muscle Actin. Immunogen の所有権に関して (Peptide available as <a href="#">ab16102</a> .)
ポジティブ・コントロール	Recombinant Human alpha smooth muscle Actin protein ( <a href="#">ab114148</a> ) can be used as a positive control in WB. HeLa Whole Cell Lysate A431 Whole Cell lysate NIH 3T3 (Mouse embryonic fibroblast cell line) Whole Cell Lysate MEF1 (Mouse embryonic fibroblast cell line) Whole Cell Lysate Brain (Mouse) Tissue Lysate Kidney (Mouse) Tissue Lysate Ovary (Mouse) Tissue Lysate - normal tissue Brain (Rat) Tissue Lysate - normal tissue

### 製品の特性

製品の状態	Liquid
保存方法	Shipped at 4°C. Upon delivery aliquot and store at -20°C or -80°C. Avoid repeated freeze / thaw cycles.
バッファー	Preservative: 0.02% Sodium Azide Constituents: 1% BSA, PBS, pH 7.4
精製度	Immunogen affinity purified
ポリ/モノ	ポリクローナル
アイソタイプ	IgG

### アプリケーション

Our [Abpromise guarantee](#) covers the use of **ab15734** in the following tested applications.

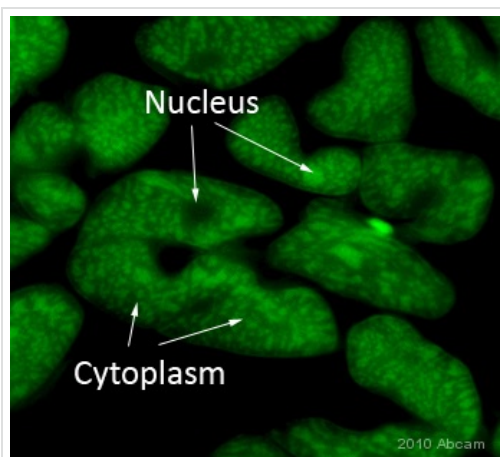
The application notes include recommended starting dilutions; optimal dilutions/concentrations should be determined by the end user.

アプリケーション	Abreviews	特記事項
IHC (PFA fixed)		1/200.
IHC-FoFr	★★★★☆	1/1000.
IHC-P	★★★★☆	Use at an assay dependent concentration.
IHC-Fr		Use at an assay dependent concentration.
WB	★★★★★	Use a concentration of 1 µg/ml. Detects a band of approximately 42 kDa (predicted molecular weight: 42 kDa).

## ターゲット情報

<b>機能</b>	Actins are highly conserved proteins that are involved in various types of cell motility and are ubiquitously expressed in all eukaryotic cells.
<b>関連疾患</b>	Defects in ACTA2 are the cause of aortic aneurysm familial thoracic type 6 (AAT6) [MIM:611788]. AATs are characterized by permanent dilation of the thoracic aorta usually due to degenerative changes in the aortic wall. They are primarily associated with a characteristic histologic appearance known as 'medial necrosis' or 'Erdheim cystic medial necrosis' in which there is degeneration and fragmentation of elastic fibers, loss of smooth muscle cells, and an accumulation of basophilic ground substance.
<b>配列類似性</b>	Belongs to the actin family.
<b>細胞内局在</b>	Cytoplasm > cytoskeleton.

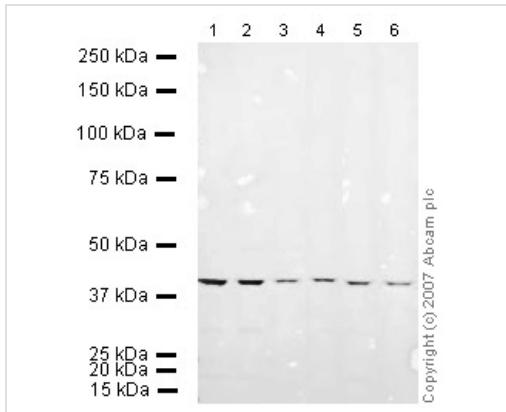
## 画像



Ab15734 detecting Alpha Smooth Muscle Actin in Rat Heart. The tissue were fixed (animal Perfused fixed) with 4% PFA and Later postfixied overnight i the same fixitive. The tissue is cryoprotected in 30% sucrose and cut uisng a cryostat

Immunohistochemistry (Frozen sections) - Anti-alpha smooth muscle Actin antibody (ab15734)

This image is courtesy of an Abreview submitted by Dr. Sophie Pezet



Western blot - Anti-alpha smooth muscle Actin antibody (ab15734)

**All lanes :** Anti-alpha smooth muscle Actin antibody (ab15734) at 1  $\mu$ g/ml

**Lane 1 :** NIH 3T3 whole cell lysate (ab7179)

**Lane 2 :** MEF1 (Mouse embryonic fibroblast cell line) Whole Cell Lysate

**Lane 3 :** Brain (Mouse) Tissue Lysate

**Lane 4 :** Kidney (Mouse) Tissue Lysate

**Lane 5 :** Ovary (Mouse) Tissue Lysate - normal tissue

**Lane 6 :** Brain (Rat) Tissue Lysate - normal tissue

Lysates/proteins at 10  $\mu$ g per lane.

### Secondary

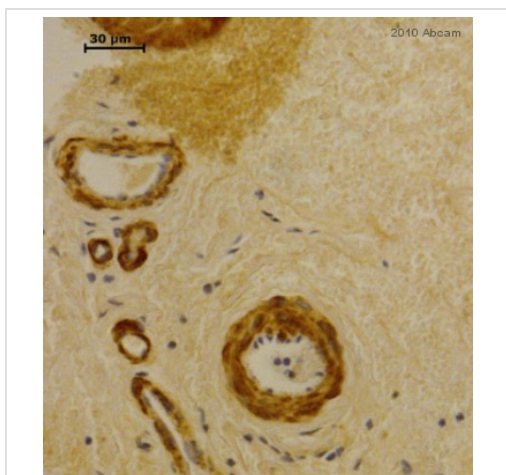
**All lanes :** IRDye 680 Conjugated Goat Anti-Rabbit IgG (H+L) at 1/10000 dilution

Performed under reducing conditions.

**Predicted band size:** 42 kDa

**Observed band size:** 41 kDa

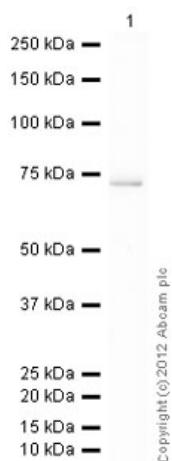
[why is the actual band size different from the predicted?](#)



Immunohistochemistry (Formalin/PFA-fixed paraffin-embedded sections) - Anti-alpha smooth muscle Actin antibody (ab15734)

This image is courtesy of an anonymous Abreview.

ab15734 staining alpha smooth muscle Actin in Horse trachealis muscle tissue by Immunohistochemistry (Formalin/PFA-fixed paraffin-embedded tissue sections). The sections were fixed in ethanol prior to blocking with 10% BSA for 1 hour at 21°C. The primary antibody was diluted 1/100 and incubated with the sample for 12 hours at 4°C. An EXPOSE Polyvalent HRP/DAB detection kit (ab80436) was used for detection.



Western blot - Anti-alpha smooth muscle Actin antibody (ab15734)

Anti-alpha smooth muscle Actin antibody (ab15734) at 1 µg/ml +  
Recombinant Human alpha smooth muscle Actin protein  
(ab114148) at 0.1 µg

**Secondary**

Goat Anti-Rabbit IgG H&L (HRP) preadsorbed (ab97080) at  
1/5000 dilution

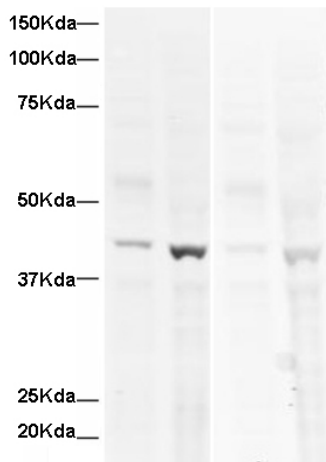
Developed using the ECL technique.

Performed under reducing conditions.

**Predicted band size:** 42 kDa

**Exposure time:** 20 seconds

Ab15734 recognizes the full length tagged recombinant alpha small  
muscle Actin protein (ab114148) which has an expected molecular  
weight of 67 kDa.



Western blot - Anti-alpha smooth muscle Actin antibody (ab15734)

**All lanes :** Anti-alpha smooth muscle Actin antibody (ab15734) at 1  
µg/ml

**Lane 1 :** HeLa whole cell lysate

**Lane 2 :** A431 cell lysate

**Lane 3 :** HeLa whole cell lysate with Human alpha smooth muscle  
Actin peptide (ab16102) at 1 µg/ml

**Lane 4 :** A431 cell lysate with Human alpha smooth muscle Actin  
peptide (ab16102) at 1 µg/ml

Lysates/proteins at 20 µg per lane.

**Secondary**

**All lanes :** Goat-anti-Rabbit IgG at 1/10000 dilution

Performed under reducing conditions.

**Predicted band size:** 42 kDa

### **Our Abpromise to you: Quality guaranteed and expert technical support**

---

- Replacement or refund for products not performing as stated on the datasheet
- Valid for 12 months from date of delivery
- Response to your inquiry within 24 hours
  
- We provide support in Chinese, English, French, German, Japanese and Spanish
- Extensive multi-media technical resources to help you
- We investigate all quality concerns to ensure our products perform to the highest standards

If the product does not perform as described on this datasheet, we will offer a refund or replacement. For full details of the Abpromise, please visit <https://www.abcam.co.jp/abpromise> or contact our technical team.

### **Terms and conditions**

---

- Guarantee only valid for products bought direct from Abcam or one of our authorized distributors