

## Product datasheet

# Anti-alpha Adducin antibody [EP734Y] ab40760

RabMAb<sup>®</sup>

画像数 3

### 製品の概要

製品名	Anti-alpha Adducin antibody [EP734Y]
製品の詳細	Rabbit monoclonal [EP734Y] to alpha Adducin
由来種	Rabbit
アプリケーション	<b>適用あり:</b> WB, IHC-P, ICC/IF <b>適用なし:</b> Flow Cyt or IP
種交差性	<b>交差種:</b> Mouse, Rat, Human
免疫原	Synthetic peptide within Human alpha Adducin (C terminal). The exact sequence is proprietary.
ポジティブ・コントロール	HeLa cell lysate, human lung (IHC-p).
特記事項	Our RabMAb <sup>®</sup> technology is a patented hybridoma-based technology for making rabbit monoclonal antibodies. For details on our patents, please refer to <a href="#">RabMAb<sup>®</sup> patents</a>

### 製品の特性

製品の状態	Liquid
保存方法	Shipped at 4°C. Upon delivery aliquot and store at -20°C. Avoid freeze / thaw cycles.
バッファー	pH: 7.20 Preservative: 0.05% Sodium azide Constituents: 99% Tissue culture supernatant, 0.1% BSA
精製度	Tissue culture supernatant
ポリ/モノ	モノクローナル
クローン名	EP734Y
アイソタイプ	IgG

### アプリケーション

Our [Abpromise guarantee](#) covers the use of **ab40760** in the following tested applications.

The application notes include recommended starting dilutions; optimal dilutions/concentrations should be determined by the end user.

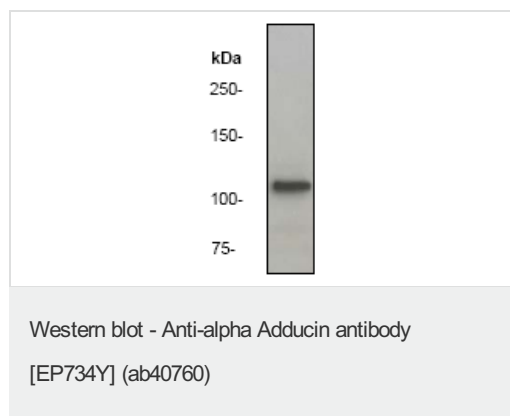
アプリケーション	Abreviews	特記事項
WB		1/5000 - 1/50000. Detects a band of approximately 120 kDa (predicted molecular weight: 120 kDa).
IHC-P		1/250 - 1/500.
ICC/IF		1/250 - 1/500.

**追加情報** Is unsuitable for Flow Cyt or IP.

## ターゲット情報

<b>機能</b>	Membrane-cytoskeleton-associated protein that promotes the assembly of the spectrin-actin network. Binds to calmodulin.
<b>組織特異性</b>	Expressed in all tissues. Found in much higher levels in reticulocytes than the beta subunit.
<b>配列類似性</b>	Belongs to the aldolase class II family. Adducin subfamily.
<b>ドメイン</b>	Each subunit is comprised of three regions: a NH <sub>2</sub> -terminal protease-resistant globular head region, a short connecting subdomain, and a protease-sensitive tail region.
<b>細胞内局在</b>	Cytoplasm > cytoskeleton. Cell membrane.

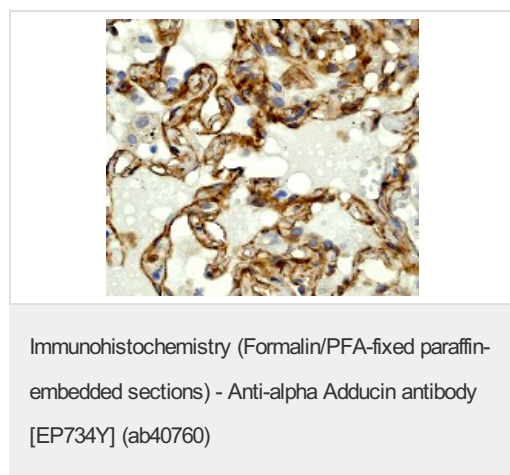
## 画像



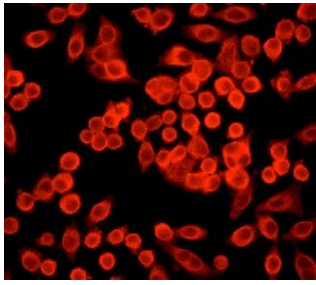
Anti-alpha Adducin antibody [EP734Y] (ab40760) at 1/50000 dilution + HeLa cell lysate at 10 µg

**Predicted band size:** 120 kDa

**Observed band size:** 120 kDa



ab40760 (1/250), staining human lung by immunohistochemistry, paraffin embedded tissue.



ab40760, (1/250) staining HeLa cells by immunofluorescence.

Immunocytochemistry/ Immunofluorescence - Anti-alpha Adducin antibody [EP734Y] (ab40760)

**Please note:** All products are "FOR RESEARCH USE ONLY AND ARE NOT INTENDED FOR DIAGNOSTIC OR THERAPEUTIC USE"

### **Our Abpromise to you: Quality guaranteed and expert technical support**

- Replacement or refund for products not performing as stated on the datasheet
- Valid for 12 months from date of delivery
- Response to your inquiry within 24 hours
- We provide support in Chinese, English, French, German, Japanese and Spanish
- Extensive multi-media technical resources to help you
- We investigate all quality concerns to ensure our products perform to the highest standards

If the product does not perform as described on this datasheet, we will offer a refund or replacement. For full details of the Abpromise, please visit <https://www.abcam.co.jp/abpromise> or contact our technical team.

### **Terms and conditions**

- Guarantee only valid for products bought direct from Abcam or one of our authorized distributors