


Product datasheet

Anti-KCTD16 antibody ab99204

画像数 1

製品の概要

製品名	Anti-KCTD16 antibody
製品の詳細	Rabbit polyclonal to KCTD16
由来種	Rabbit
アプリケーション	適用あり: WB
種交差性	交差種: Human 交差が予測される動物種: Mouse, Rat, Rabbit, Horse, Chicken, Cow, Cat, Dog 
免疫原	Synthetic peptide, corresponding to a region within N-terminal amino acids 107-156 (KREAEIFQLP DLVKLLTPDE IKQSPDEFCH SDFEDASQGS DTRICPPSSL) of Human KCTD16 (NP_065819). Run BLAST with ExPASy Run BLAST with NCBI
ポジティブ・コントロール	HepG2 cell lysate

製品の特性

製品の状態	Liquid
保存方法	Shipped at 4°C. Upon delivery aliquot and store at -20°C. Avoid repeated freeze / thaw cycles.
バッファー	Preservative: None Constituents: 2% Sucrose, PBS
精製度	Immunogen affinity purified
ポリ/モノ	ポリクローナル
アイソタイプ	IgG

アプリケーション

Our [Abpromise guarantee](#) covers the use of **ab99204** in the following tested applications.

The application notes include recommended starting dilutions; optimal dilutions/concentrations should be determined by the end user.

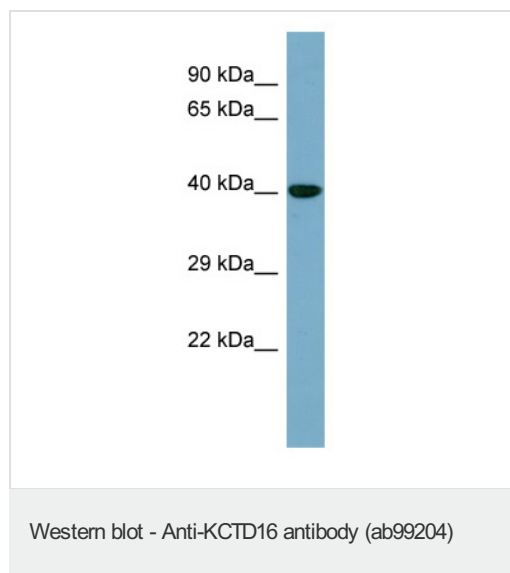
アプリケーション	Abreviews	特記事項

アプリケーション	Abreviews	特記事項
WB		Use a concentration of 1 µg/ml. Predicted molecular weight: 49 kDa. Good results were obtained when blocked with 5% non-fat dry milk in 0.05% PBS-T.

ターゲット情報

機能	Auxiliary subunit of GABA-B receptors that determine the pharmacology and kinetics of the receptor response. Increases agonist potency and markedly alter the G-protein signaling of the receptors by accelerating onset and promoting desensitization.
配列類似性	Contains 1 BTB (POZ) domain.
細胞内局在	Cell junction > synapse > presynaptic cell membrane. Cell junction > synapse > postsynaptic cell membrane.

画像



Anti-KCTD16 antibody (ab99204) at 1 µg/ml +
HepG2 cell lysate at 10 µg

Predicted band size: 49 kDa

Please note: All products are "FOR RESEARCH USE ONLY AND ARE NOT INTENDED FOR DIAGNOSTIC OR THERAPEUTIC USE"

Our Abpromise to you: Quality guaranteed and expert technical support

- Replacement or refund for products not performing as stated on the datasheet
- Valid for 12 months from date of delivery
- Response to your inquiry within 24 hours
- We provide support in Chinese, English, French, German, Japanese and Spanish
- Extensive multi-media technical resources to help you
- We investigate all quality concerns to ensure our products perform to the highest standards

If the product does not perform as described on this datasheet, we will offer a refund or replacement. For full details of the Abpromise,

please visit <https://www.abcam.co.jp/abpromise> or contact our technical team.

Terms and conditions

- Guarantee only valid for products bought direct from Abcam or one of our authorized distributors