

## Product datasheet

# Anti-Ube2L6 antibody ab98855

### 画像数 1

#### 製品の概要

製品名	Anti-Ube2L6 antibody
製品の詳細	Rabbit polyclonal to Ube2L6
由来種	Rabbit
アプリケーション	適用あり: WB
種交差性	交差種: Human 交差が予測される動物種: Mouse, Rabbit, Pig
免疫原	Synthetic peptide corresponding to a region within internal sequence amino acids 103 - 152 (QVLEALNVLV NRPNIREPLR MDLADLLTQN PELFRKNAEE FTLRFGVDRP) of Human Ube2L6 (NP_004214). <a href="#">Run BLAST with ExPASy</a> <a href="#">Run BLAST with NCBI</a>
ポジティブ・コントロール	Human fetal small intestine lysate

#### 製品の特性

製品の状態	Liquid
保存方法	Shipped at 4°C. Upon delivery aliquot and store at -20°C. Avoid repeated freeze / thaw cycles.
バッファー	Preservative: None Constituents: 2% Sucrose, PBS
精製度	Immunogen affinity purified
ポリ/モノ	ポリクローナル
アイソタイプ	IgG

#### アプリケーション

Our [Abpromise guarantee](#) covers the use of **ab98855** in the following tested applications.

The application notes include recommended starting dilutions; optimal dilutions/concentrations should be determined by the end user.

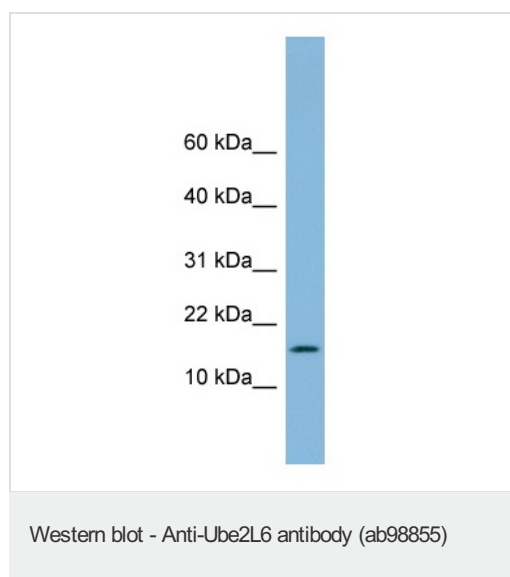
アプリケーション	Abreviews	特記事項
----------	-----------	------

アプリケーション	Abreviews	特記事項
WB		Use a concentration of 1 µg/ml. Predicted molecular weight: 18 kDa. Good results were obtained when blocked with 5% non-fat dry milk in 0.05% PBS-T.

## ターゲット情報

機能	Catalyzes the covalent attachment of ubiquitin or ISG15 to other proteins. Functions in the E6/E6-AP-induced ubiquitination of p53/TP53.
組織特異性	Present in natural killer cells (at protein level).
パスウェイ	Protein modification; protein ubiquitination.
配列類似性	Belongs to the ubiquitin-conjugating enzyme family.
翻訳後修飾	ISGylated.

## 画像



Anti-Ube2L6 antibody (ab98855) at 1 µg/ml +  
Human fetal small intestine lysate at 10 µg

**Predicted band size:** 18 kDa

Gel concentration: 10 - 20%

**Please note:** All products are "FOR RESEARCH USE ONLY AND ARE NOT INTENDED FOR DIAGNOSTIC OR THERAPEUTIC USE"

## Our Abpromise to you: Quality guaranteed and expert technical support

- Replacement or refund for products not performing as stated on the datasheet
- Valid for 12 months from date of delivery
- Response to your inquiry within 24 hours
- We provide support in Chinese, English, French, German, Japanese and Spanish
- Extensive multi-media technical resources to help you
- We investigate all quality concerns to ensure our products perform to the highest standards

If the product does not perform as described on this datasheet, we will offer a refund or replacement. For full details of the Abpromise, please visit <https://www.abcam.co.jp/abpromise> or contact our technical team.

## Terms and conditions

---

- Guarantee only valid for products bought direct from Abcam or one of our authorized distributors