


## Product datasheet

# Anti-BAP31 antibody ab97536

画像数 2

### 製品の概要

製品名	Anti-BAP31 antibody
製品の詳細	Rabbit polyclonal to BAP31
由来種	Rabbit
アプリケーション	適用あり: WB, ICC/IF
種交差性	交差種: Human 交差が予測される動物種: Mouse, Rat, Cow 
免疫原	Recombinant fragment, corresponding to a region within amino acids 1-225 of Human BAP31 (NP_005736)
ポジティブ・コントロール	293T, A431 and H1299 whole cell lysates; HeLa cells; HepG2, Molt-4 and Raji cell lines.

### 法規制情報

医薬用外毒物

### 製品の特性

製品の状態	Liquid
保存方法	Shipped at 4°C. Upon delivery aliquot. Store at -20°C or -80°C. Avoid freeze / thaw cycle.
バッファー	Preservative: 0.01% Thimerosal (merthiolate) Constituents: 10% Glycerol, 0.1M Tris, 0.1M Glycine, pH 7.0
精製度	Immunogen affinity purified
ポリ/モノ	ポリクローナル
アイソタイプ	IgG

### アプリケーション

Our [Abpromise guarantee](#) covers the use of **ab97536** in the following tested applications.

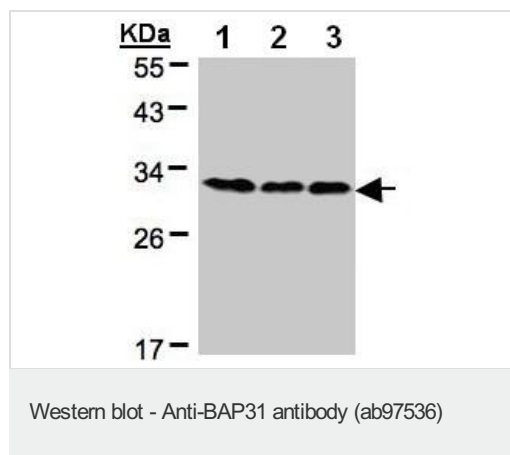
The application notes include recommended starting dilutions; optimal dilutions/concentrations should be determined by the end user.

アプリケーション	Abreviews	特記事項
WB		1/500 - 1/3000. Predicted molecular weight: 28 kDa.
ICC/IF		1/100 - 1/200.

## ターゲット情報

機能	May play a role in anterograde transport of membrane proteins from the endoplasmic reticulum to the Golgi. May be involved in CASP8-mediated apoptosis.
組織特異性	Ubiquitous.
関連疾患	Note=BCAP31 is deleted in the chromosome Xq28 deletion syndrome which involves BCAP31 and the and the promoter region of ABCD1.
配列類似性	Belongs to the BCAP29/BCAP31 family.
翻訳後修飾	Cleaved by CASP8 and other caspases.
細胞内局在	Endoplasmic reticulum membrane. Endoplasmic reticulum-Golgi intermediate compartment membrane. May shuttle between the ER and the intermediate compartment/cis-Golgi complex.

## 画像



**All lanes** : Anti-BAP31 antibody (ab97536) at 1/500 dilution

**Lane 1** : 293T whole cell lysate

**Lane 2** : A431 whole cell lysate

**Lane 3** : H1299 whole cell lysate

Lysates/proteins at 30 µg per lane.

**Predicted band size:** 28 kDa

12% SDS PAGE

1



2



Immunofluorescence analysis of paraformaldehyde-fixed HeLa, using ab97536 at 1/200 dilution (1) and merged with DNA probe (2).

Immunocytochemistry/ Immunofluorescence - Anti-BAP31 antibody (ab97536)

**Please note:** All products are "FOR RESEARCH USE ONLY AND ARE NOT INTENDED FOR DIAGNOSTIC OR THERAPEUTIC USE"

### Our Abpromise to you: Quality guaranteed and expert technical support

- Replacement or refund for products not performing as stated on the datasheet
- Valid for 12 months from date of delivery
- Response to your inquiry within 24 hours
- We provide support in Chinese, English, French, German, Japanese and Spanish
- Extensive multi-media technical resources to help you
- We investigate all quality concerns to ensure our products perform to the highest standards

If the product does not perform as described on this datasheet, we will offer a refund or replacement. For full details of the Abpromise, please visit <https://www.abcam.co.jp/abpromise> or contact our technical team.

### Terms and conditions

- Guarantee only valid for products bought direct from Abcam or one of our authorized distributors