


Product datasheet

Anti-Snf1k2 antibody ab95187

画像数 2

製品の概要

製品名	Anti-Snf1k2 antibody
製品の詳細	Rabbit polyclonal to Snf1k2
由来種	Rabbit
アプリケーション	適用あり: WB, IP
種交差性	交差種: Human 交差が予測される動物種: Chimpanzee, Rhesus monkey, Gorilla, Orangutan 
免疫原	Synthetic peptide, corresponding to a region within internal sequence amino acids 600-650 of Human Snf1k2 (NP_056006.1)
ポジティブ・コントロール	HeLa whole cell lysate, 293T whole cell lysate

製品の特性

製品の状態	Liquid
保存方法	Shipped at 4°C. Upon delivery aliquot and store at -20°C. Avoid freeze / thaw cycles.
バッファー	Preservative: 0.09% Sodium azide Constituent: Tris citrate/phosphate
精製度	Immunogen affinity purified
特記事項 (精製)	ab95187 was affinity purified using an epitope specific to Snf1k2 immobilized on a solid support.
ポリモノ	ポリクローナル
アイソタイプ	IgG

アプリケーション

Our [Abpromise guarantee](#) covers the use of **ab95187** in the following tested applications.

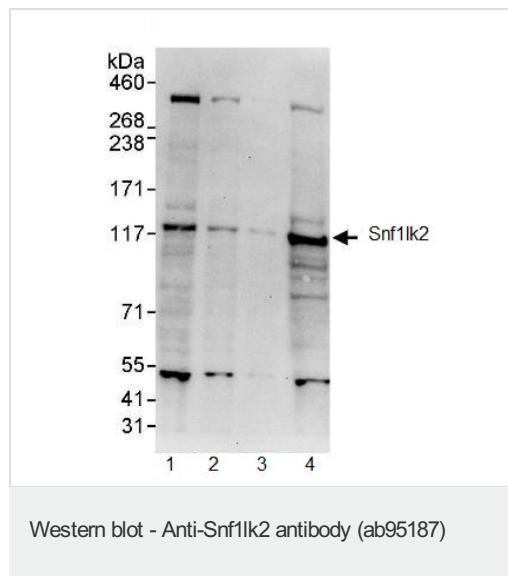
The application notes include recommended starting dilutions; optimal dilutions/concentrations should be determined by the end user.

アプリケーション	Abreviews	特記事項
WB		1/2000 - 1/10000. Predicted molecular weight: 104 kDa.
IP		Use at 2-5 µg/mg of lysate.

ターゲット情報

機能	Phosphorylates 'Ser-794' of IRS1 in insulin-stimulated adipocytes, potentially modulating the efficiency of insulin signal transduction. Inhibits CREB activity by phosphorylating and repressing TORCs, the CREB-specific coactivators.
配列類似性	Belongs to the protein kinase superfamily. CAMK Ser/Thr protein kinase family. AMPK subfamily. Contains 1 protein kinase domain. Contains 1 UBA domain.
細胞内局在	Cytoplasm.

画像



All lanes : Anti-Snf1lk2 antibody (ab95187) at 0.4 µg/ml

Lane 1 : HeLa whole cell lysate at 50 µg

Lane 2 : HeLa whole cell lysate at 15 µg

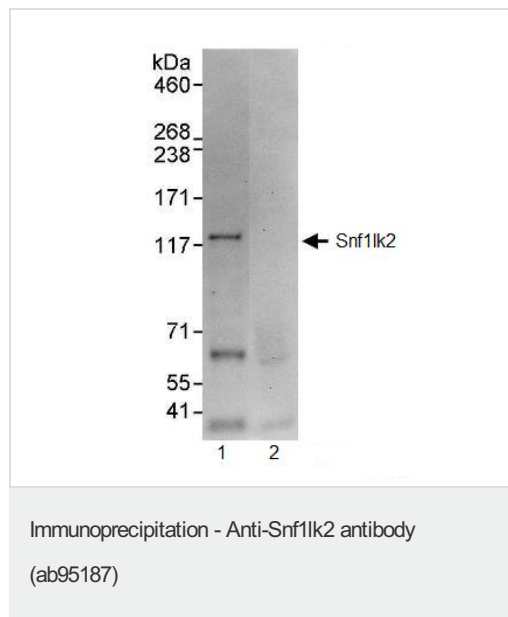
Lane 3 : HeLa whole cell lysate at 5 µg

Lane 4 : 293T whole cell lysate at 50 µg

Developed using the ECL technique.

Predicted band size: 104 kDa

Exposure time: 30 seconds



ab95187 at 3 µg/mg of lysate precipitating Snf1lk2 from HeLa whole cell lysate.

Lane 1; HeLa whole cell lysate. Lane 2; Control IgG. 1 mg of lysate used for IP and 20% of IP loaded.

Detection utilised ab95187 at 1 µg/ml and ECL with a 30 second exposure.

Please note: All products are "FOR RESEARCH USE ONLY AND ARE NOT INTENDED FOR DIAGNOSTIC OR THERAPEUTIC USE"

Our Abpromise to you: Quality guaranteed and expert technical support

- Replacement or refund for products not performing as stated on the datasheet
- Valid for 12 months from date of delivery
- Response to your inquiry within 24 hours

- We provide support in Chinese, English, French, German, Japanese and Spanish
- Extensive multi-media technical resources to help you
- We investigate all quality concerns to ensure our products perform to the highest standards

If the product does not perform as described on this datasheet, we will offer a refund or replacement. For full details of the Abpromise, please visit <https://www.abcam.co.jp/abpromise> or contact our technical team.

Terms and conditions

- Guarantee only valid for products bought direct from Abcam or one of our authorized distributors