

## Product datasheet

# Anti-Cyclin E2 antibody ab94724

### 画像数 1

#### 製品の概要

製品名	Anti-Cyclin E2 antibody
製品の詳細	Rabbit polyclonal to Cyclin E2
由来種	Rabbit
アプリケーション	適用あり: WB
種交差性	交差種: Human 交差が予測される動物種: Mouse, Rat, Cow
免疫原	Synthetic peptide corresponding to a region within N terminal amino acids 36-85 (TQDVKKRREE VTKKHQYEIR NCWPPVLSGG ISPCIIIETP HKEIGTSDFS) of Human Cyclin E2 (NP_477097). <a href="#">Run BLAST with ExPASy</a> <a href="#">Run BLAST with NCBI</a>
ポジティブ・コントロール	OVCAR-3 cell lysate

#### 製品の特性

製品の状態	Liquid
保存方法	Shipped at 4°C. Upon delivery aliquot and store at -20°C. Avoid repeated freeze / thaw cycles.
バッファー	Preservative: None Constituents: 2% Sucrose, PBS
精製度	Immunogen affinity purified
ポリ/モノ	ポリクローナル
アイソタイプ	IgG

#### アプリケーション

Our [Abpromise guarantee](#) covers the use of **ab94724** in the following tested applications.

The application notes include recommended starting dilutions; optimal dilutions/concentrations should be determined by the end user.

アプリケーション	Abreviews	特記事項
----------	-----------	------

アプリケーション	Abreviews	特記事項
WB		Use a concentration of 1 µg/ml. Predicted molecular weight: 47 kDa. Good results were obtained when blocked with 5% non-fat dry milk in 0.05% PBS-T.

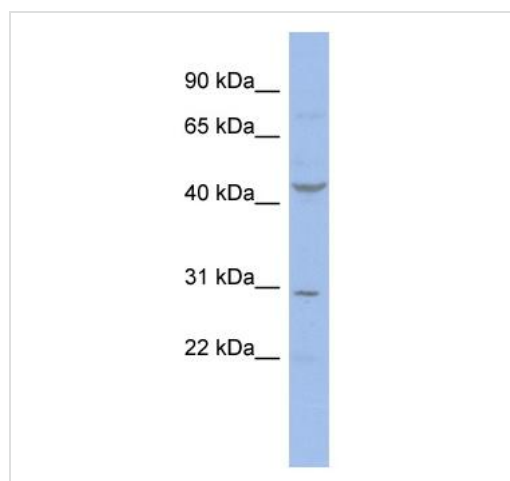
## ターゲット情報

**関連性**

The human Cyclin E2 gene encodes a 404 amino acid protein that is most closely related to Cyclin E. Cyclin E2 mRNA levels peaks at the G1 / S transition. Cyclin E2 associates with Cdk2 in a functional kinase complex that is inhibited by both p27 (Kip1) and p21 (Cip1). Cyclin E2 / Cdk2 phosphorylates histone H1 in vitro. G1 cyclin E controls the initiation of DNA synthesis by activating CDK2. Abnormally high levels of cyclin E expression have frequently been observed in human cancers. Unlike Cyclin E1, which is expressed in great majority of proliferating normal and neoplastically transformed cells, Cyclin E2 levels are low to undetectable in non transformed cells and increase significantly in neoplasm derived cells.

**細胞内局在** Nuclear

## 画像



Western blot - Anti-Cyclin E2 antibody (ab94724)

Anti-Cyclin E2 antibody (ab94724) at 1 µg/ml  
(in 5% skim milk / PBS buffer) + OVCAR-3  
cell lysate at 10 µg

### Secondary

HRP conjugated anti-Rabbit IgG at 1/5000  
dilution

**Predicted band size:** 47 kDa

Gel concentration: 12%

**Please note:** All products are "FOR RESEARCH USE ONLY AND ARE NOT INTENDED FOR DIAGNOSTIC OR THERAPEUTIC USE"

## Our Abpromise to you: Quality guaranteed and expert technical support

- Replacement or refund for products not performing as stated on the datasheet
- Valid for 12 months from date of delivery
- Response to your inquiry within 24 hours
- We provide support in Chinese, English, French, German, Japanese and Spanish
- Extensive multi-media technical resources to help you

- We investigate all quality concerns to ensure our products perform to the highest standards

If the product does not perform as described on this datasheet, we will offer a refund or replacement. For full details of the Abpromise, please visit <https://www.abcam.co.jp/abpromise> or contact our technical team.

### **Terms and conditions**

---

- Guarantee only valid for products bought direct from Abcam or one of our authorized distributors