


## Product datasheet

# Anti-Prolyl Endopeptidase antibody ab94611

### 画像数 1

#### 製品の概要

製品名	Anti-Prolyl Endopeptidase antibody
製品の詳細	Rabbit polyclonal to Prolyl Endopeptidase
由来種	Rabbit
アプリケーション	適用あり: WB
種交差性	交差種: Human 交差が予測される動物種: Mouse, Rat, Rabbit, Horse, Chicken, Guinea pig, Cow, Cat, Dog, Pig, Zebrafish 
免疫原	Synthetic peptide corresponding to a region within the N terminal amino acids 180-229 (HDGKGMFYNS YPQQDGKSDG TETSTNLHQK LYYHVLGTDQ SEDILCAEFP) of Human Prolyl Endopeptidase (NP_002717). <a href="#">Run BLAST with ExPASy</a> <a href="#">Run BLAST with NCBI</a>
ポジティブ・コントロール	Human fetal muscle lysate

#### 製品の特性

製品の状態	Liquid
保存方法	Shipped at 4°C. Upon delivery aliquot and store at -20°C. Avoid freeze / thaw cycles.
バッファー	Preservative: 0% None Constituents: 2% Sucrose, PBS
精製度	Immunogen affinity purified
特記事項(精製)	Rabbit Ig G is purified by peptide affinity chromatography method.
ポリ/モノ	ポリクローナル
アイソタイプ	IgG

#### アプリケーション

Our [Abpromise guarantee](#) covers the use of **ab94611** in the following tested applications.

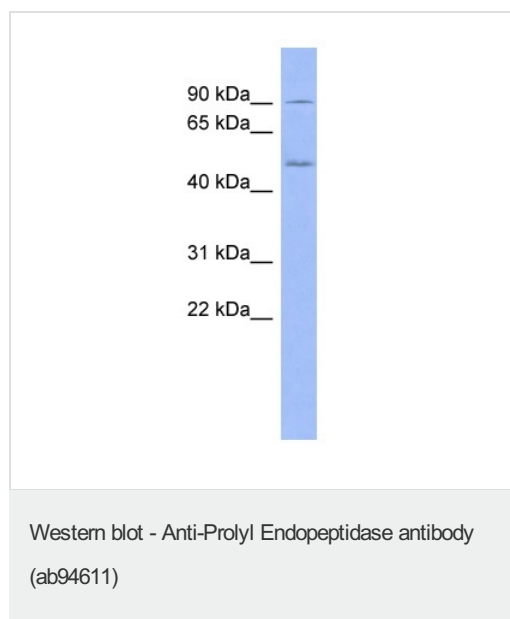
The application notes include recommended starting dilutions; optimal dilutions/concentrations should be determined by the end user.

アプリケーション	Abreviews	特記事項
WB		Use a concentration of 1 µg/ml. Predicted molecular weight: 81 kDa. Good results were obtained when blocked with 5% non-fat dry milk in 0.05% PBS-T.

## ターゲット情報

機能	Cleaves peptide bonds on the C-terminal side of prolyl residues within peptides that are up to approximately 30 amino acids long.
配列類似性	Belongs to the peptidase S9A family.
翻訳後修飾	The N-terminus is blocked.
細胞内局在	Cytoplasm.

## 画像



Anti-Prolyl Endopeptidase antibody (ab94611) at 1 µg/ml (in 5% skim milk / PBS buffer) + Human fetal muscle lysate at 10 µg

### Secondary

HRP conjugated anti-Rabbit IgG at 1/50000 dilution

**Predicted band size: 81 kDa**

12% gel

**Please note:** All products are "FOR RESEARCH USE ONLY AND ARE NOT INTENDED FOR DIAGNOSTIC OR THERAPEUTIC USE"

## Our Abpromise to you: Quality guaranteed and expert technical support

- Replacement or refund for products not performing as stated on the datasheet
- Valid for 12 months from date of delivery
- Response to your inquiry within 24 hours
- We provide support in Chinese, English, French, German, Japanese and Spanish
- Extensive multi-media technical resources to help you
- We investigate all quality concerns to ensure our products perform to the highest standards

If the product does not perform as described on this datasheet, we will offer a refund or replacement. For full details of the Abpromise,

please visit <https://www.abcam.co.jp/abpromise> or contact our technical team.

## Terms and conditions

---

- Guarantee only valid for products bought direct from Abcam or one of our authorized distributors