

Product datasheet

Anti-ECE1 antibody ab93117

1 Abreviews 画像数 2

製品の概要

製品名	Anti-ECE1 antibody
製品の詳細	Rabbit polyclonal to ECE1
由来種	Rabbit
アプリケーション	適用あり: ICC/IF, WB, ELISA
種交差性	交差種: Human
免疫原	KLH conjugated synthetic peptide selected from the center region of human ECE1 (NP_001388).
ポジティブ・コントロール	HepG2 cell line lysate IF/ICC: HepG2 cell line.

製品の特性

製品の状態	Liquid
保存方法	Shipped at 4°C. Upon delivery aliquot and store at -20°C. Avoid repeated freeze / thaw cycles.
バッファー	Preservative: 0.09% Sodium Azide Constituents: PBS
精製度	Immunogen affinity purified
特記事項(精製)	Purified through a protein A column, followed by peptide affinity purification.
ポリ/モノ	ポリクローナル
アイソタイプ	IgG

アプリケーション

Our [Abpromise guarantee](#) covers the use of **ab93117** in the following tested applications.

The application notes include recommended starting dilutions; optimal dilutions/concentrations should be determined by the end user.

アプリケーション	Abreviews	特記事項
ICC/IF		
WB		

ELISA

追加情報

ELISA: 1/1000.

WB: 1/100 - 1/500. Predicted molecular weight: 87 kDa.

Not yet tested in other applications.

Optimal dilutions/concentrations should be determined by the end user.

ターゲット情報

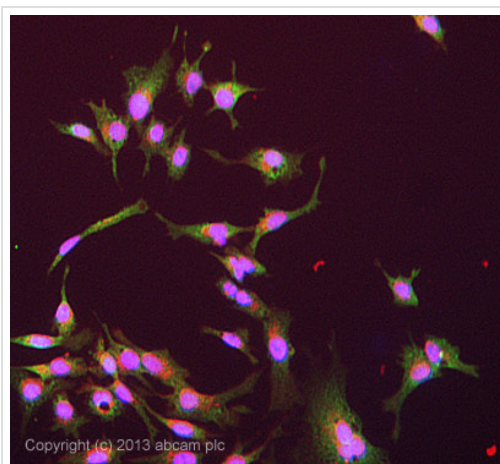
関連性

Function: Converts big endothelin-1 to endothelin-1. Tissue specificity: All isoforms are expressed in umbilical vein endothelial cells, polynuclear neutrophils, fibroblasts, atrium cardiomyocytes and ventricles. Isoforms A, B and C are also expressed in placenta, lung, heart, adrenal gland and phaeochromocytoma; isoforms A and C in liver, testis and small intestine; isoform B, C and D in endothelial cells and umbilical vein smooth muscle cells; isoforms C and D in saphenous vein cells, and isoform C in kidney. Disease: Hirschsprung disease cardiac defects and autonomic dysfunction Similarity: Belongs to the peptidase M13 family.

細胞内局在

Cell Membrane. Single pass type II membrane protein.

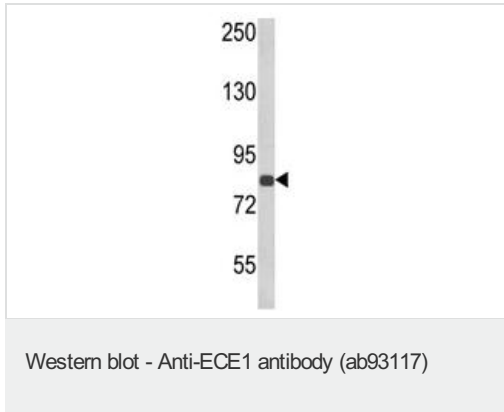
画像



Copyright (c) 2013 abcam plc

Immunocytochemistry/ Immunofluorescence - Anti-ECE1 antibody (ab93117)

ICC/IF image of ab93117 stained HepG2 cells. The cells were 4% formaldehyde fixed (10 min) and then incubated in 1%BSA / 10% normal goat serum / 0.3M glycine in 0.1% PBS-Tween for 1h to permeabilise the cells and block non-specific protein-protein interactions. The cells were then incubated with the antibody (ab93117, 5µg/ml) overnight at +4°C. The secondary antibody (green) was [ab96899](#), DyLight® 488 goat anti-rabbit IgG (H+L) used at a 1/250 dilution for 1h. Alexa Fluor® 594 WGA was used to label plasma membranes (red) at a 1/200 dilution for 1h. DAPI was used to stain the cell nuclei (blue) at a concentration of 1.43µM



Anti-ECE1 antibody (ab93117) at 1/100 dilution + HepG2 cell line lysate at 35 µg

Predicted band size: 87 kDa

Observed band size: 87 kDa

Please note: All products are "FOR RESEARCH USE ONLY AND ARE NOT INTENDED FOR DIAGNOSTIC OR THERAPEUTIC USE"

Our Abpromise to you: Quality guaranteed and expert technical support

- Replacement or refund for products not performing as stated on the datasheet
- Valid for 12 months from date of delivery
- Response to your inquiry within 24 hours
- We provide support in Chinese, English, French, German, Japanese and Spanish
- Extensive multi-media technical resources to help you
- We investigate all quality concerns to ensure our products perform to the highest standards

If the product does not perform as described on this datasheet, we will offer a refund or replacement. For full details of the Abpromise, please visit <https://www.abcam.co.jp/abpromise> or contact our technical team.

Terms and conditions

- Guarantee only valid for products bought direct from Abcam or one of our authorized distributors